



203HW User Guide



## 203HW User Guide Contents

Introduction	
Introduction.....	2
<b>Getting Started</b>	
Parts & Functions.....	6
USIM Card.....	7
Memory Card.....	8
<b>Setting Up Windows PC</b>	
Device Recognition/Removal on Windows PC.....	12
Software Installation (Windows PC).....	13
Dial-Up Connection (Windows PC).....	25
<b>Setting Up Mac</b>	
Device Recognition/Removal on Mac.....	30
Software Installation (Mac).....	31
<b>SoftBank 203HW Utility</b>	
SoftBank 203HW Utility Overview.....	38
Connecting/Disconnecting to/from Internet.....	38
Setting via SoftBank 203HW Utility.....	40
Updating Software.....	49
<b>Troubleshooting</b>	
Troubleshooting.....	52
Specifications.....	54
Warranty & Service.....	55
Customer Service.....	55
<b>Safety Precautions</b>	
Safety Precautions.....	58
General Notes.....	63
Specific Absorption Rate (SAR) Information for this Product.....	64

## Introduction

---

### Before You Begin

Read "[Safety Precautions](#)" and this guide thoroughly beforehand for proper usage.

Accessible services may be limited by contact conditions.

### Guide Usage Notes

Most operation descriptions are based on default settings.

### Other Descriptions

This product is referred to as "wireless modem" in this guide. In this guide, microSD™/microSDHC™/microSDXC™ Card is referred to as "Memory Card."

## Operating Environment (Compatible Operating Systems)

Use wireless modem in any of these operating environments. Use outside these environments may affect performance. Operating environment (hardware, connected peripherals, installed applications, etc.) may also affect performance.

- For computer support, OS version upgrade information, etc., see corresponding manufacturer's product support documentation.
- The following operating environment (Compatible Operating Systems) is based on the information as of May, 2013.

Item	Description
Compatible Operating Systems	Windows XP Home Edition (Service Pack 3 or later)
	Windows XP Professional (Service Pack 3 or later)
	Windows Vista Home Basic (32-bit or 64-bit)
	Windows Vista Home Premium (32-bit or 64-bit)
	Windows Vista Home Business (32-bit or 64-bit)
	Windows Vista Ultimate (32-bit or 64-bit)
	Windows 7 Starter (32-bit)
	Windows 7 Home Basic (32-bit or 64-bit)
	Windows 7 Home Premium (32-bit or 64-bit)
	Windows 7 Professional (32-bit or 64-bit)
	Windows 7 Enterprise (32-bit or 64-bit)
	Windows 7 Ultimate (32-bit or 64-bit)
	Windows 8 (32-bit or 64-bit)
Windows 8 Pro (32-bit or 64-bit)	
Windows 8 Enterprise (32-bit or 64-bit)	
Mac OS X 10.5 to 10.8 (32-bit or 64-bit)	
Memory Requirements	Windows XP: 256 MB+ (512 MB+ recommended)
	Windows Vista: 512 MB+ (1 GB+ recommended)
	Windows 7: 1 GB+ (32-bit)/2 GB+ (64-bit)
	Windows 8: 1 GB+ (32-bit)/2 GB+ (64-bit)
	Mac OS X: 256 MB+ (512 MB+ recommended)
Hard Disk Capacity	200 MB+ recommended (100 MB+ free space needed)
Interface	USB2.0 Highspeed

## Package Contents

The following items are included in the package. Please confirm package contents before use. Contact [SoftBank Customer Support](#) for missing items.

Keep accessories including Warranty in a safe place.

- 203HW
- USB Extension Cable (sample)
- クイックスタート (Japanese)
- お願いとご注意 (Japanese)
- Warranty (for unit)

## Usage Conditions

- Wireless modem supports Software Update. Use wireless modem with the latest version software.
- Access point compatible with Packet Flat Rate is set on wireless modem and Utility Software by default (factory default). The frequency band of the access point is controlled by the SoftBank Mobile network.
- Communication speed may become slow or communication may not be available because of connection congestion or communication environment.
- Wireless modem is designed for office use only. Functions can be controlled by an administrator. Administrator control may affect settings and operations described in this guide.

## Trademarks

- Microsoft®, Windows®, Internet Explorer, Windows Vista® are registered trademarks of Microsoft Corporation in the United States/other countries.
- Microsoft Windows operating system is indicated in its abbreviated form as Windows.
- Apple is a trademark of Apple Inc.
- microSD, microSDHC and microSDXC logos are trademarks of SD-3C, LLC.
- SOFTBANK, SOFTBANK's equivalent in Japanese and the SOFTBANK logo are registered trademarks or trademarks of SOFTBANK CORP. in Japan and other countries.
- The names of the companies, products and services used in this guide are registered trademarks or trademarks of the respective companies.

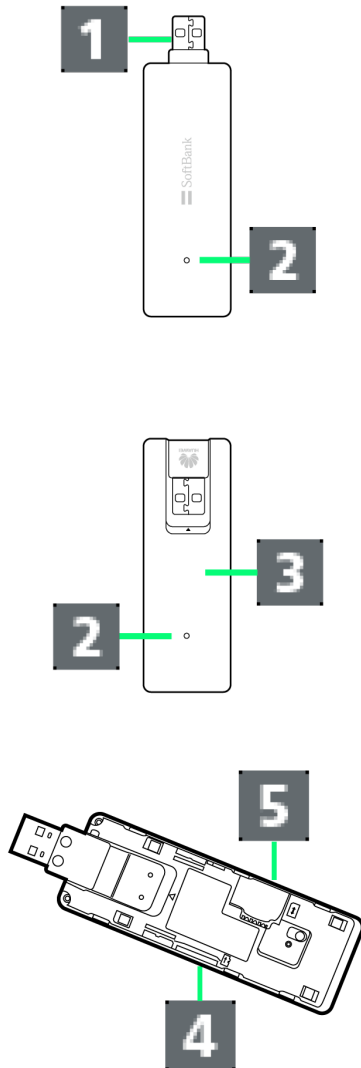


## Getting Started

Parts & Functions.....	6
USIM Card.....	7
Memory Card.....	8

## Parts & Functions

### Wireless Modem



Part	Description
<b>1</b> USB Plug	Connect to computer USB port
<b>2</b> LED Status Lamp	Color and lighting pattern Indicate status of wireless modem
<b>3</b> Cover	Protects USIM Card and Memory Card
<b>4</b> Memory Card Slot	Insert Memory Card
<b>5</b> USIM Card Slot	Insert USIM Card



Orientation of USB Plug can be changed as shown on the left

### LED Status Lamp

LED Status Lamp indicates communication status or abnormal status.

LED color and lighting pattern per second	Communication status/ Abnormal status
Flashes in red (at even intervals)	<ul style="list-style-type: none"> <li>· Activating</li> <li>· Searching for network</li> <li>· Registering network</li> <li>· USIM Card is completely locked</li> <li>· USIM Card malfunction</li> </ul>
Lights in red	Out of service area
Flashes in red (on briefly, off briefly)	Communication suspended due to high temperature
Flashes in yellow (at even intervals)	<ul style="list-style-type: none"> <li>· Waiting for PIN entry</li> <li>· Waiting for PUK entry</li> </ul>
Flashes in purple (on briefly, off long)	4G available (not communicating or sending while within service area)
Lights in purple	4G communicating
Flashes in blue (on briefly, off long)	3G available (not communicating or sending while within service area)
Lights in blue	3G communicating
Flashes in green (on briefly, off long)	GSM/GPRS available (not communicating or sending while within service area)
Lights in green	GSM/GPRS communicating
Flashes in green (on briefly, off briefly)	Updating software

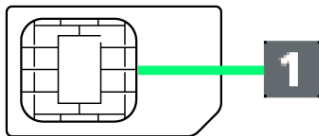


## USIM Card

USIM Card IC chip contains customer information, including phone number.

### Handling USIM Card

- SoftBank Mobile Corp. is not liable for damages resulting from inserting USIM Card in other-brand IC card reader etc.
- Always keep IC chip clean.
- Clean USIM Card with a soft dry cloth.
- Do not attach labels on USIM Card. May cause malfunction.
- For handling, see USIM Card user guide.
- USIM Card is the property of SoftBank Mobile Corp.
- You will be charged for reissue of lost or damaged USIM Card.
- Return USIM Card to SoftBank Mobile Corp. when canceling contract.
- Returned USIM Card will be recycled for protection of the environment.
- Specifications and performance of USIM Card are subject to change without notice.
- Keep copy of saved contents in USIM Card by yourself. SoftBank Mobile Corp. is not liable for damages incurred due to loss of saved information.
- In case USIM Card or wireless modem (USIM Card inserted) is lost or stolen, request to have usage suspended urgently. Contact [SoftBank Customer Support](#), General Information.
- Remove wireless modem from computer before removing/ installing USIM Card.



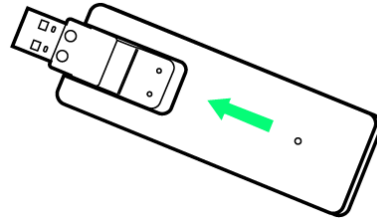
**1** IC chip

## USIM Card Installation

Remove wireless modem from computer in advance.

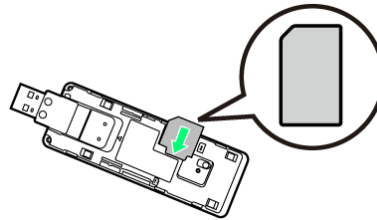
**1**

Open Cover



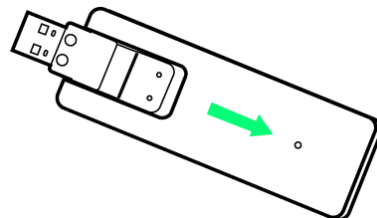
**2**


Insert USIM Card into Slot in the direction of the arrow with IC chip down



**3**

Close Cover



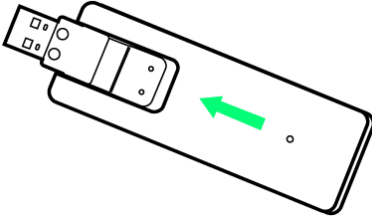
 USIM Card installation is complete.

## Removing USIM Card

Remove wireless modem from computer in advance.

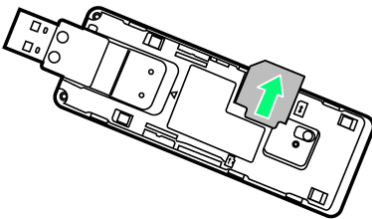
1

Open Cover



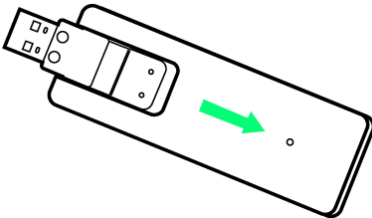
2


Remove USIM Card from Slot



3

Close Cover



 USIM Card removal is complete.

## Memory Card

Install Memory Card to use wireless modem as USB flash drive of computer.

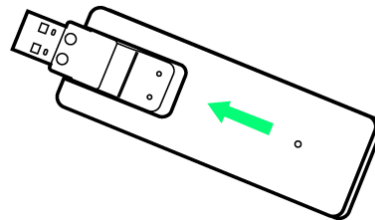
Wireless modem accepts up to 64 GB Memory Card. SoftBank Mobile Corp. does not guarantee compatibility with all Memory Cards.

### Memory Card Installation

Remove wireless modem from computer in advance.

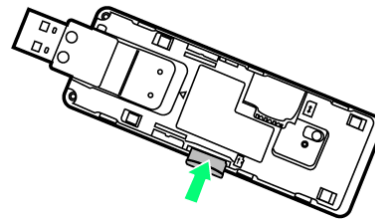
1

Open Cover



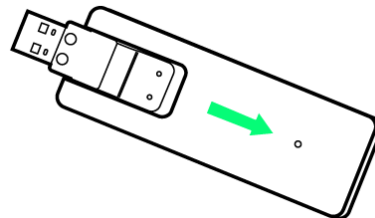
2

Insert Memory Card into Slot with metal terminals down until it clicks



3

Close Cover



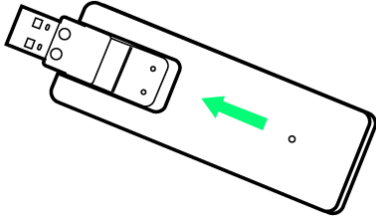
 Memory Card installation is complete.

## Removing Memory Card

Remove wireless modem from computer in advance.

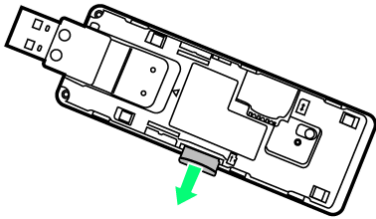
1

Open Cover



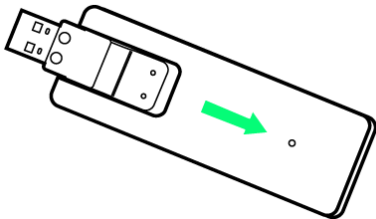
2

Push Memory Card into Slot and release it slowly, then pull out Memory Card



3

Close Cover



🚩 Memory Card removal is complete.

## ! Notes on Memory Card Usage

### Installation/Removal

Do not force when installing/removing Memory Card. May cause injury or damage of Memory Card.

Do not force when installing Memory Card. May cause damage. Be careful not to lose removed Memory Card.

Hold Memory Card when removing it. May cause malfunction.

Do not hold Memory Card Slot to your face or eyes when removing. May cause injury or malfunction.

### Saved Contents

Saved contents in Memory Card may be lost or altered by accident or malfunction. Keep copy of saved contents. SoftBank Mobile Corp. is not liable for damages incurred due to lost or altered information.

### Reading/Writing Data

Do not remove wireless modem from connected device while reading/writing data.



## Setting Up Windows PC

Device Recognition/Removal on Windows PC.....	12
Software Installation (Windows PC).....	13
Dial-Up Connection (Windows PC).....	25

## Device Recognition/Removal on Windows PC

### Device Recognition (Windows PC)

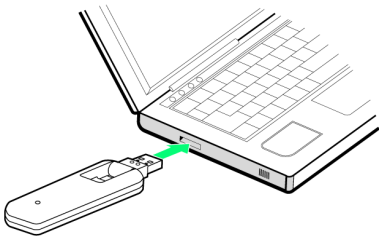
When connecting wireless modem to PC for the first time, Driver software is automatically installed.

1

Power on PC

2

Connect wireless modem into PC USB port



PC recognizes wireless modem (it takes a while).

### Device Removal (Windows 8/Windows 7)

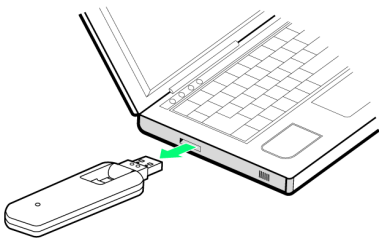
Make sure that data transmission is finished and SoftBank 203HW Utility is exited before removing wireless modem.

1

Click   Eject Removable Disk

2

When message indicating safe removal appears, remove wireless modem




Device removal is complete.


### Device Removal (Windows Vista/Windows XP)


Make sure that data transmission is finished and SoftBank 203HW Utility is exited before removing wireless modem.

- For Windows Vista/Windows XP users, use "Safely Remove Hardware/Safe to Remove Hardware" to stop device operation, then remove wireless modem from PC. See following steps for removal.

1

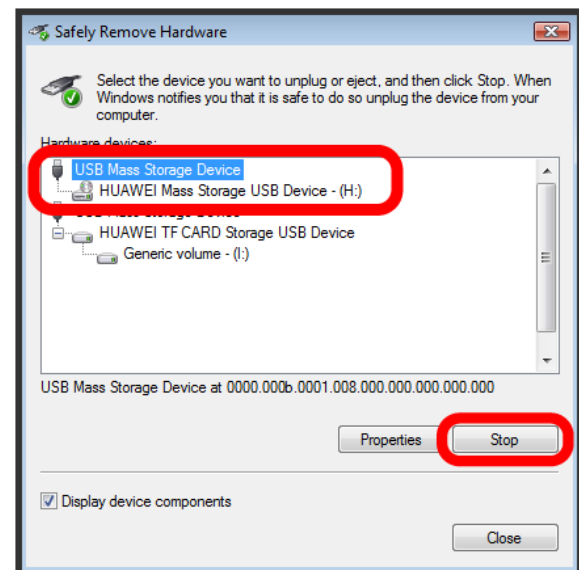
For Windows Vista, Double-click  in task tray


 "Safely Remove Hardware" appears.

- For Windows XP, Double-click  in task tray.

2

USB Mass Storage Device  Stop



 "Stop a Hardware device" appears.

- If multiple USB devices are connected to PC, make sure to select wireless modem.

3

OK



Message indicating safe removal appears.

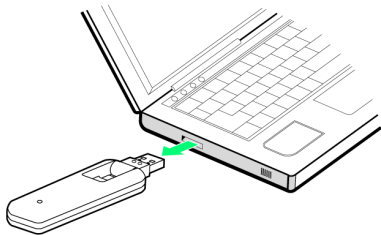
4

For second "USB Mass Storage Device," repeat Steps 2 to

3

5

When message indicating safe removal appears, remove wireless modem



Device removal is complete.

### Notes on Device Removal

#### Operation While in Standby/Sleep Mode

Wireless modem may malfunction if PC enters standby (suspend/resume) or sleep (hibernation) mode with it connected. Make sure to remove wireless modem before PC goes into standby or sleep mode. Wireless modem may malfunction if PC restarts or is turned on with it connected. Remove wireless modem before activating PC.

#### SoftBank 203HW Utility

Exit SoftBank 203HW Utility before removing wireless modem from PC. Do not remove wireless modem from PC during data communication.

## Software Installation (Windows PC)

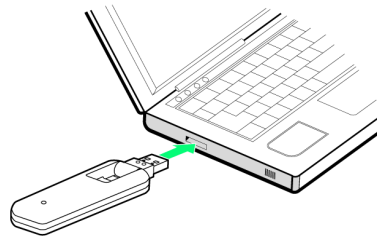
When connecting wireless modem to PC for the first time, Driver software is automatically installed.

### Driver Installation (Windows 8)

Start PC in advance.

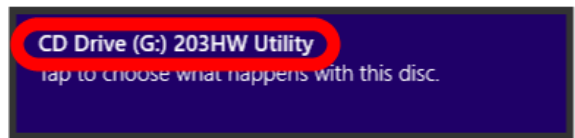
1

Connect wireless modem to PC USB port



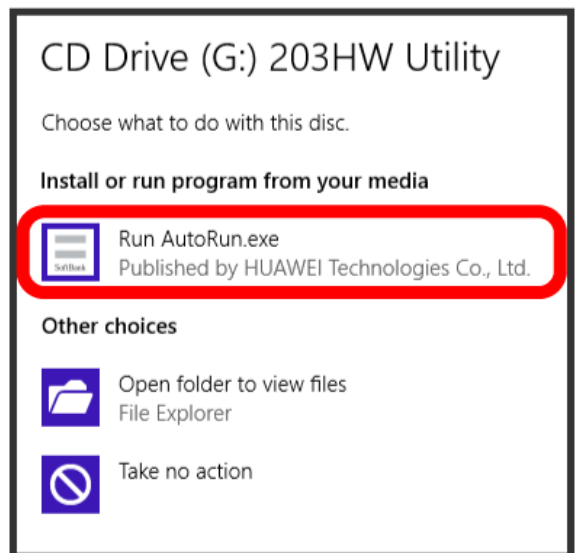
2

"203HW Utility"



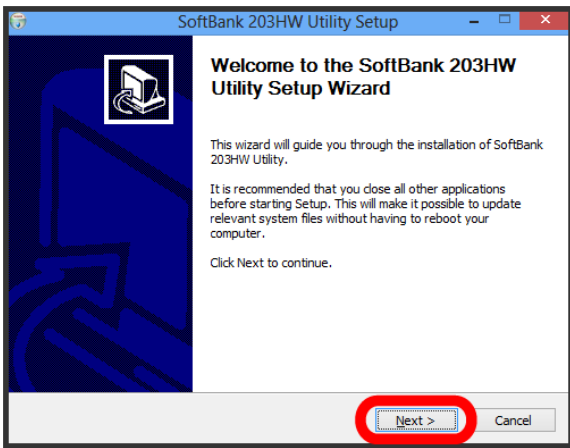
3

Run AutoRun.exe



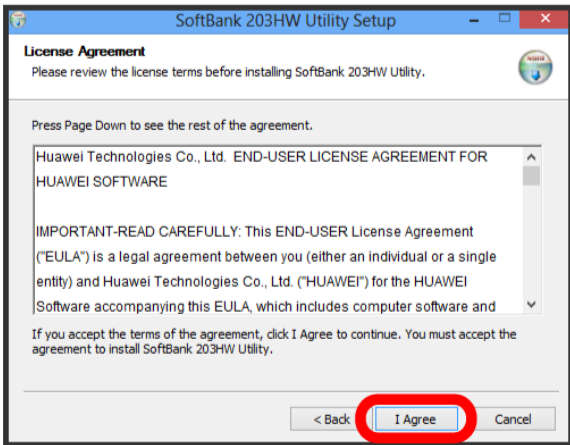
4

Next



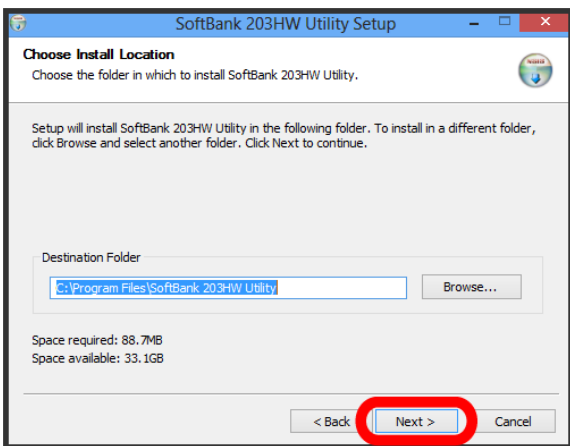
5

I Agree



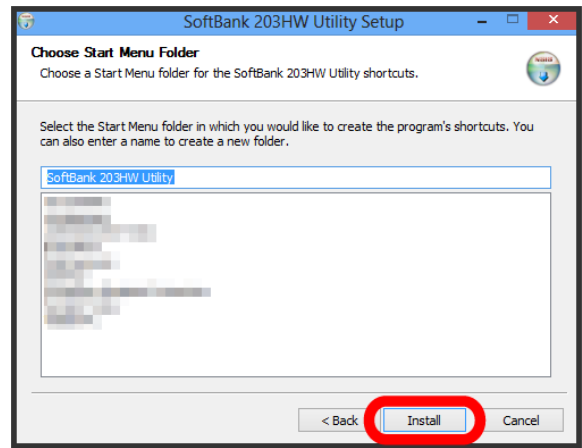
6

Select folder for installation, then Next



7

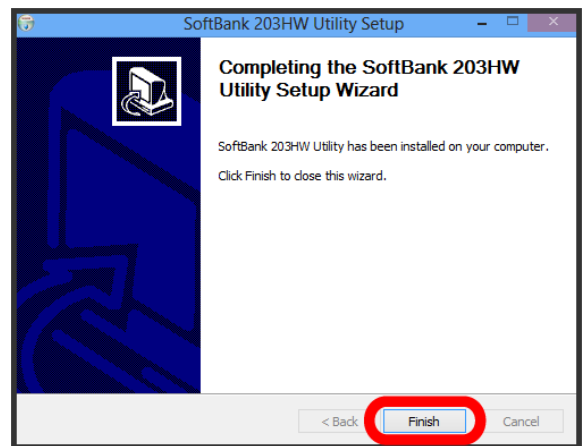
Set Start Menu, then Install



Installation starts.

8

Finish



When complete, "SoftBank 203HW Utility" icon appears on Desktop.

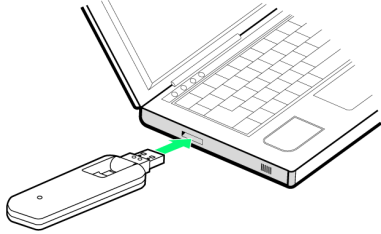


# Driver Installation (Windows 7)

Start PC in advance.

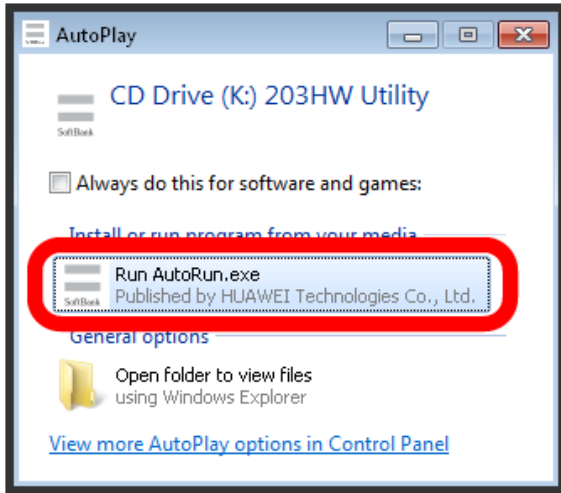
1

Connect wireless modem to PC USB port



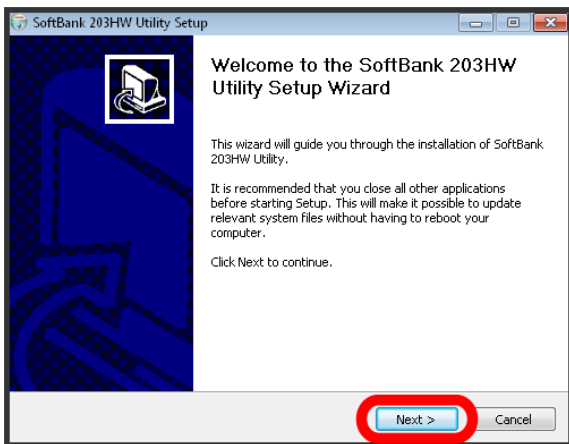
2

Run AutoRun.exe



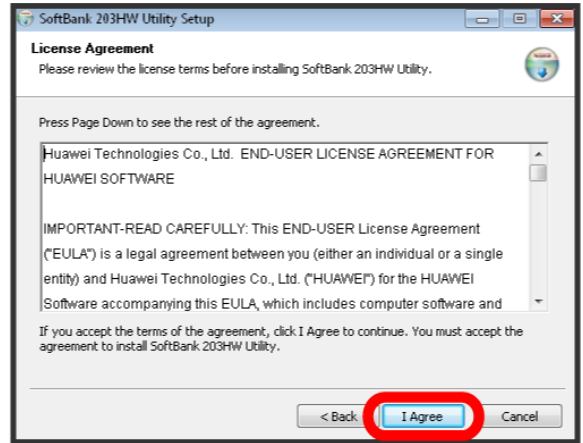
3

Next



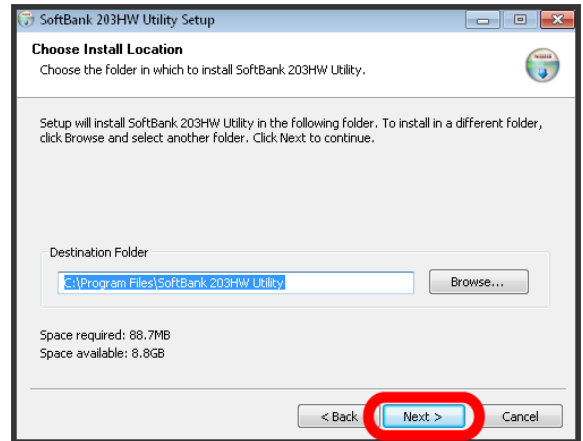
4

I Agree



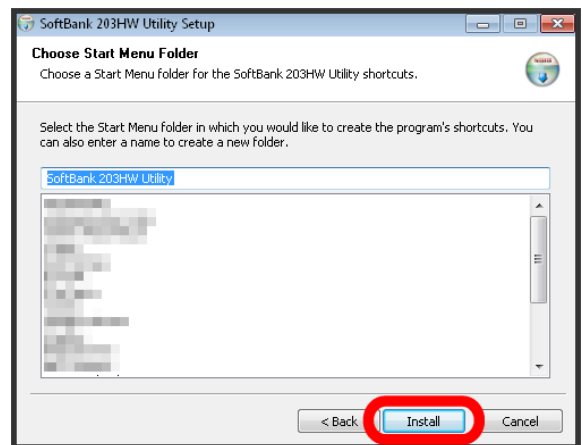
5

Select install location, then Next



6

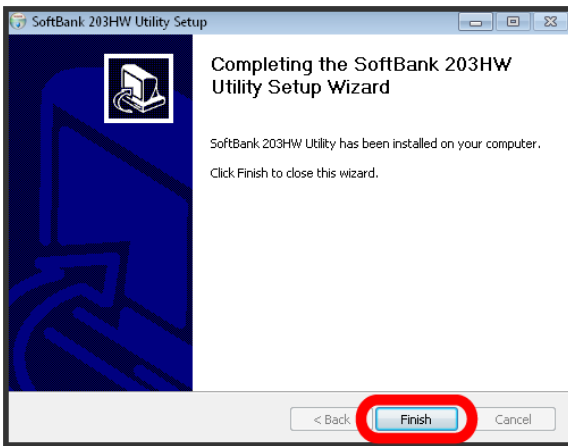
Set Start Menu, then Install



Installation starts.

7

Finish



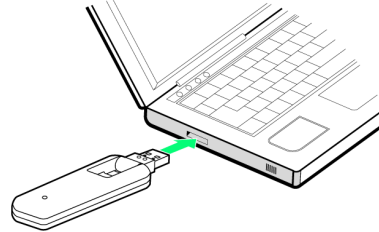
When complete, "SoftBank 203HW Utility" icon appears on Desktop.

## Driver Installation (Windows Vista)

Start PC in advance.

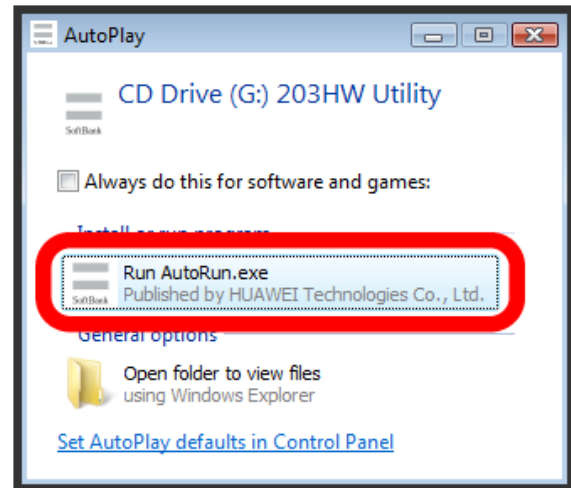
1

Connect wireless modem to PC USB port



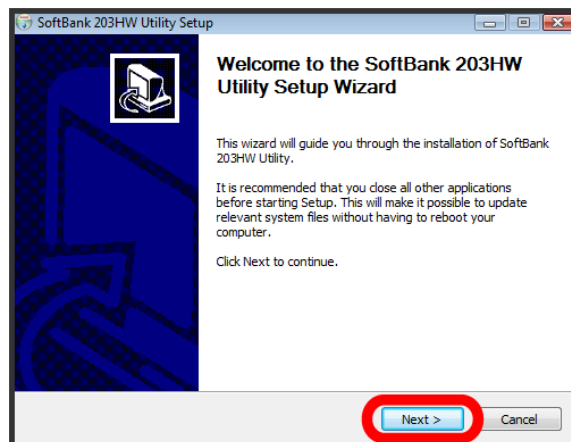
2

Run AutoRun.exe



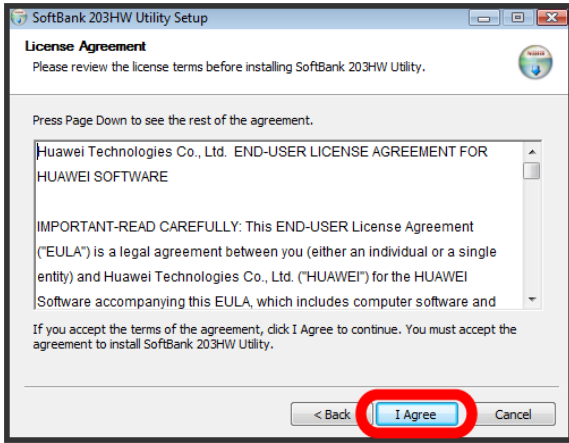
3

Next



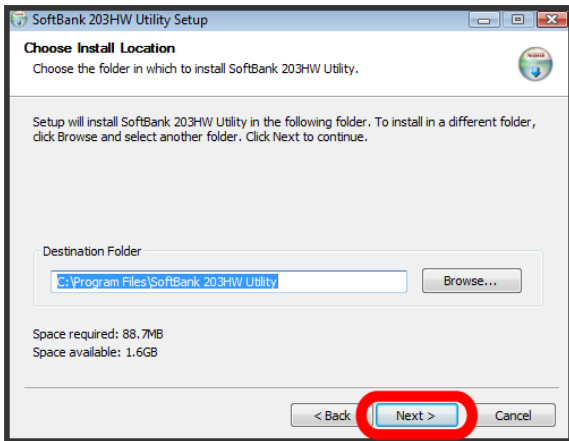
4

I Agree



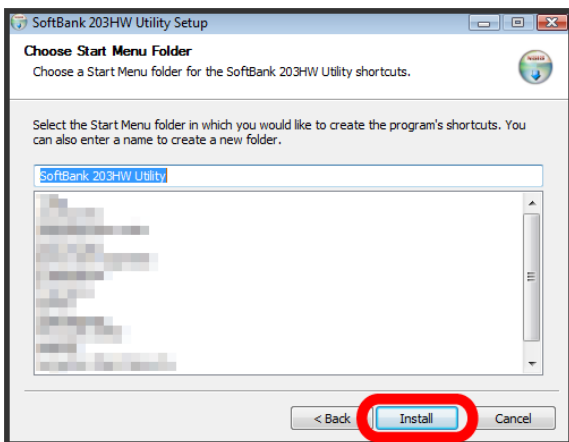
5

Select install location, then Next



6

Set Start Menu, then Install



Installation starts.

7

Finish



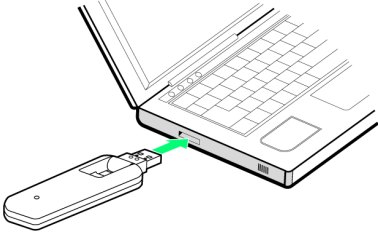
When complete, "SoftBank 203HW Utility" icon appears on Desktop.

## Driver Installation (Windows XP)

Start PC in advance.

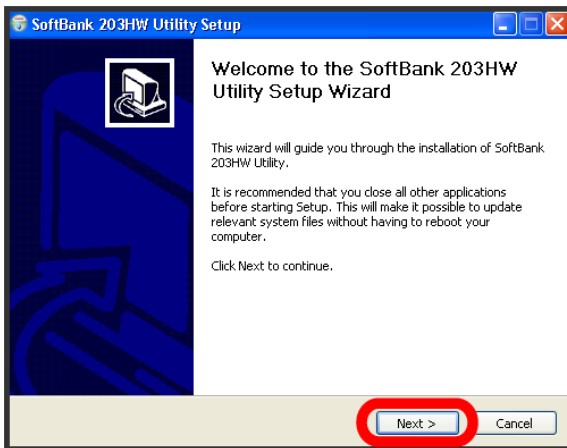
1

Connect wireless modem to PC USB port



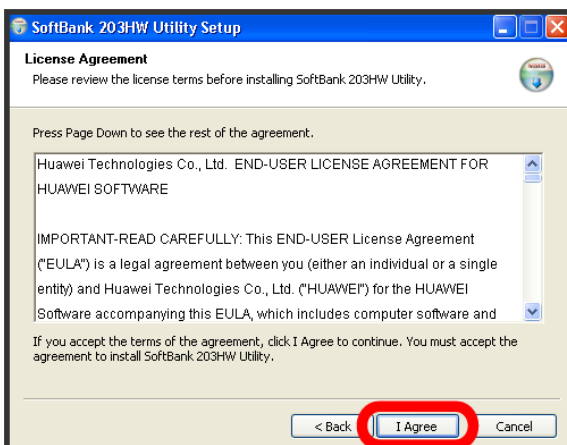
2

Next



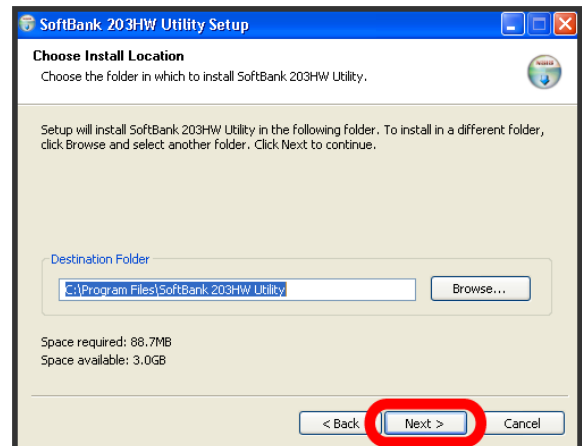
3

I Agree



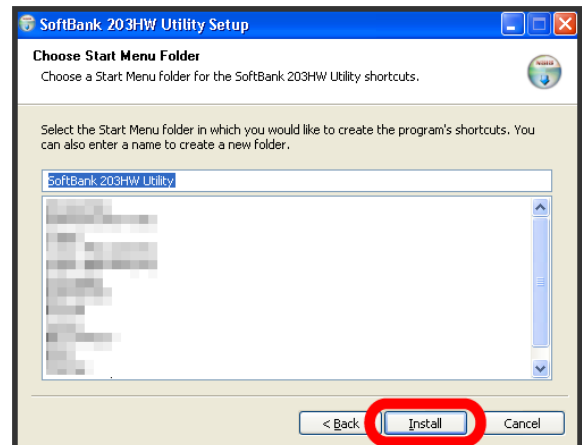
4

Select install location, then Next



5

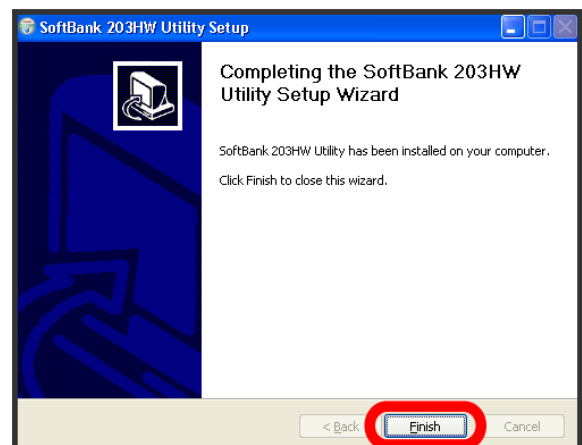
Set Start Menu, then Install



Installation starts.

6

Finish






When complete, "SoftBank 203HW Utility" icon appears on Desktop.

## Manual Installation (Windows 8)

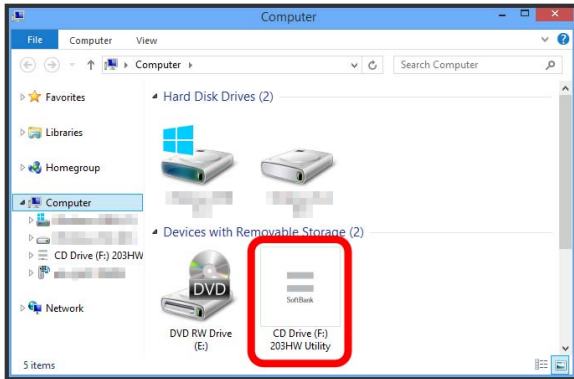
If installation fails to start automatically after connecting wireless modem, follow these steps.

1

Swipe in from right edge (with mouse, move your pointer into upper-right corner) →  charm →  Apps →  Computer


2

Select "203HW Utility"



3

See " [Driver Installation \(Windows 8\)](#) " Step **4** and later

 When complete, "SoftBank 203HW Utility" icon appears on Desktop.

## Manual Installation (Windows 7)

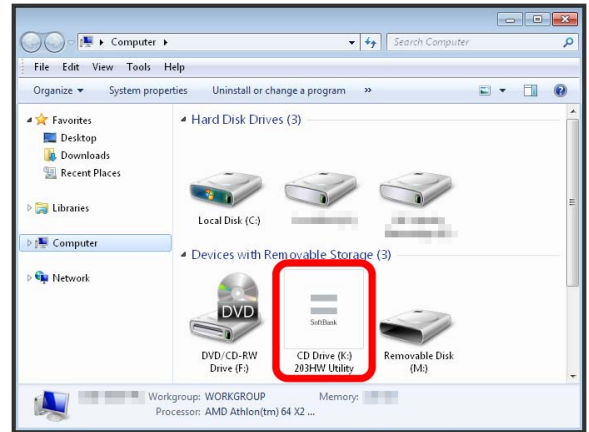
If installation fails to start automatically after connecting wireless modem, follow these steps.

1

Start →  Computer


2

Double-click "203HW Utility"



3

See " [Driver Installation \(Windows 7\)](#) " Step **3** and later

 When complete, "SoftBank 203HW Utility" icon appears on Desktop.

## Manual Installation (Windows Vista)

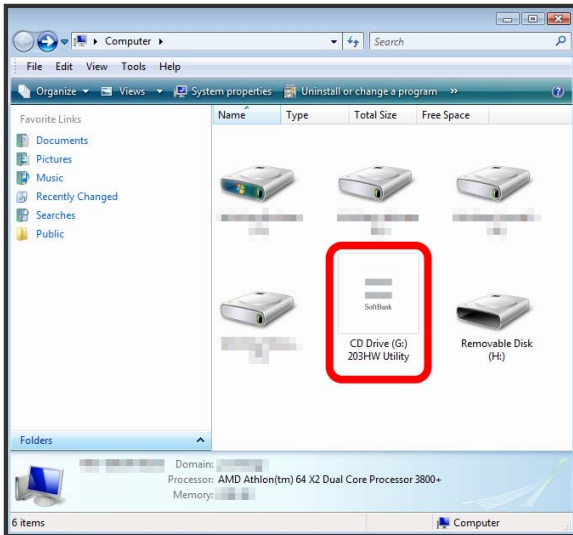
If installation fails to start automatically after connecting wireless modem, follow these steps.

1

Start → Computer

2

Double-click "203HW Utility"



3

See " [Driver Installation \(Windows Vista\)](#) " Step 3 and later

When complete, "SoftBank 203HW Utility" icon appears on Desktop.

## Manual Installation (Windows XP)

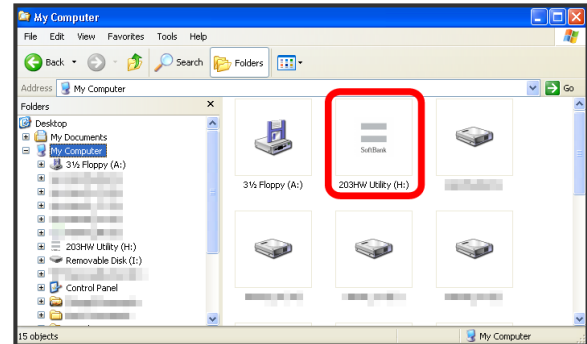
If installation fails to start automatically after connecting wireless modem, follow these steps.

1

start → My Computer

2

Double-click "203HW Utility"



3


See " [Driver Installation \(Windows XP\)](#) " Step 2 and later

When complete, "SoftBank 203HW Utility" icon appears on Desktop.

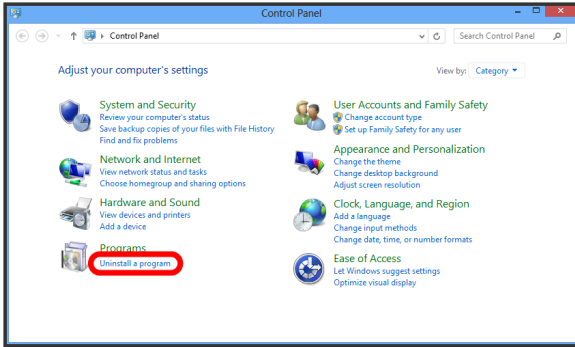
## Uninstalling Driver (Windows 8)

Remove wireless modem from PC in advance.

1

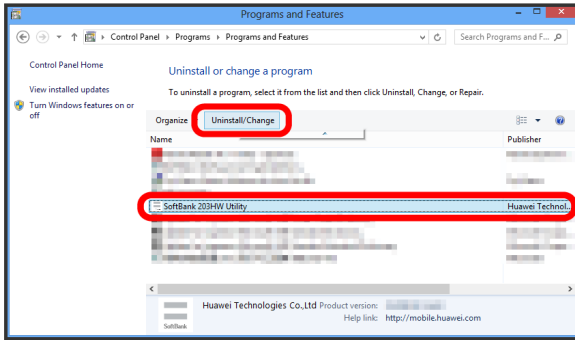
Swipe in from right edge (with mouse, move your pointer into upper-right corner) →  charm → **Control Panel** →

**Uninstall a program**



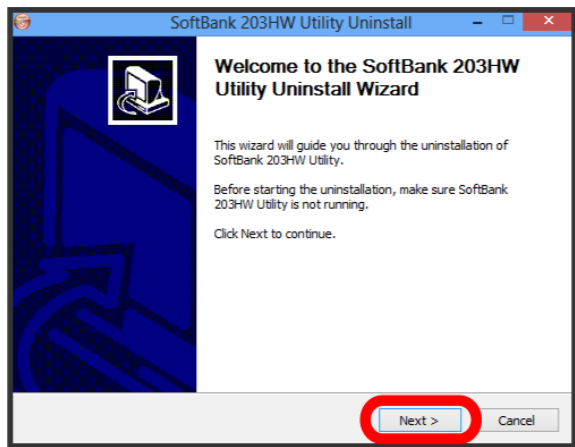
2

Select "SoftBank 203HW Utility" → **Uninstall/Change**



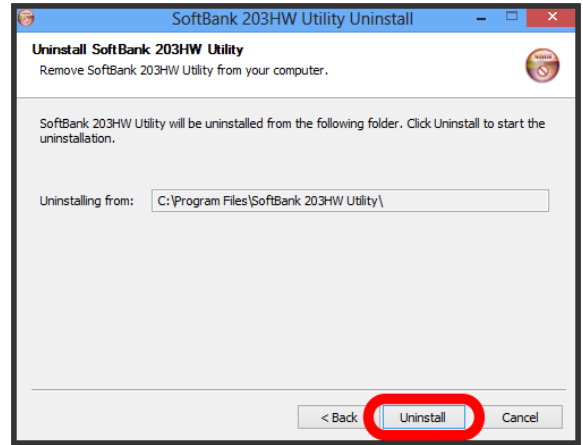
3

Next



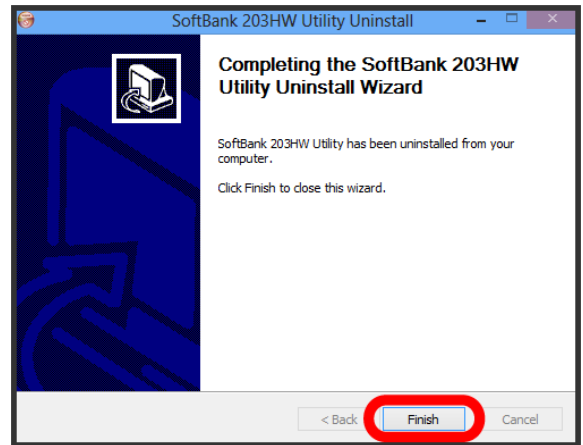
4


Uninstall



5

Finish



 When complete, "SoftBank 203HW Utility" icon disappears from Desktop.

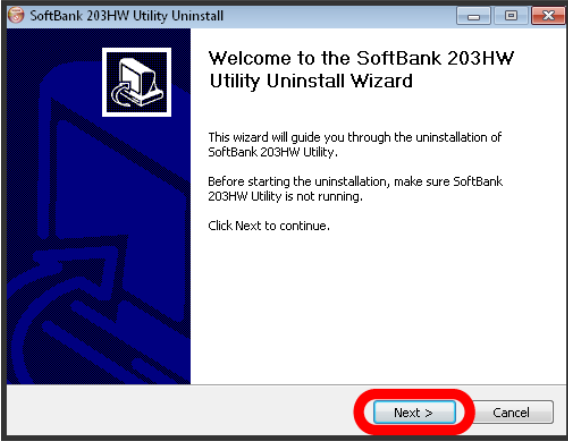
## Uninstalling Driver (Windows 7)

1

Start → All Programs → SoftBank 203HW Utility → Uninstall

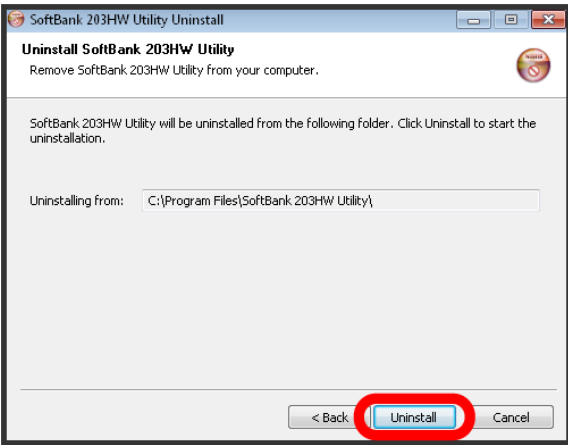
2

Next



3

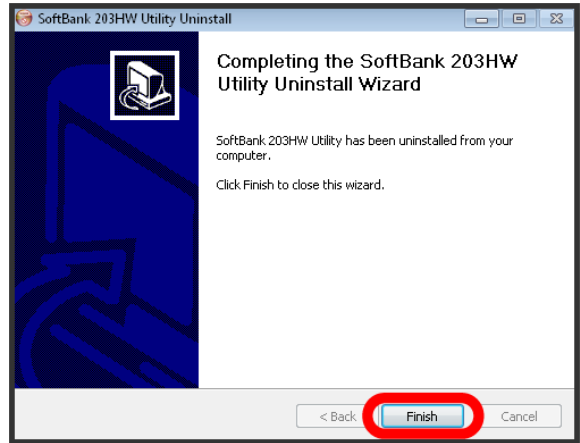
Uninstall



Uninstallation starts.

4

Finish



When complete, "SoftBank 203HW Utility" icon disappears from Desktop.



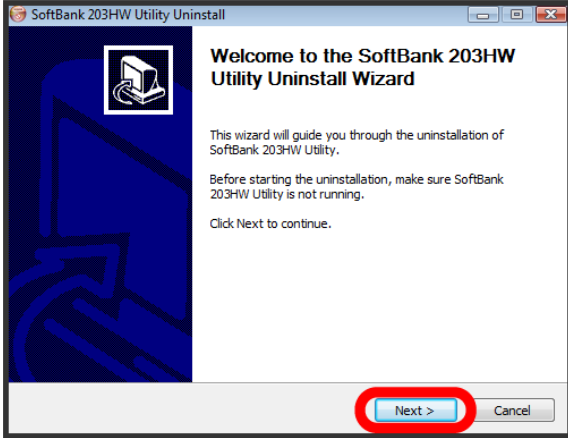
## Uninstalling Driver (Windows Vista)

1

Start → All Programs → SoftBank 203HW Utility → Uninstall

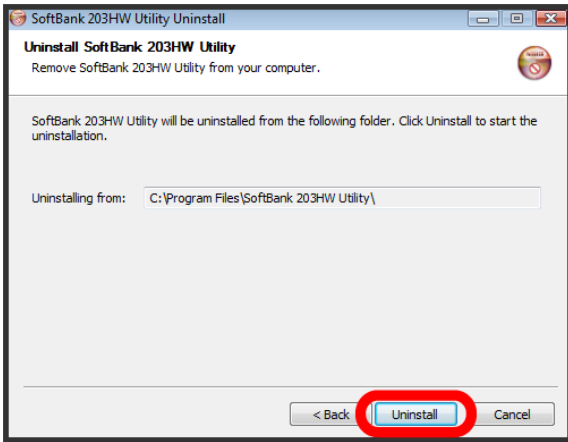
2

Next



3

Uninstall



Uninstallation starts.

4

Finish



When complete, "SoftBank 203HW Utility" icon disappears from Desktop.

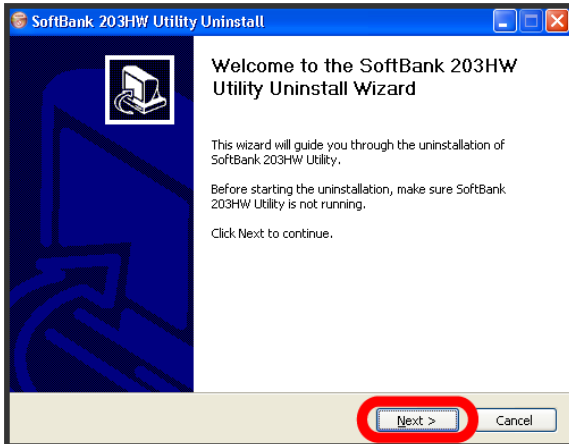
## Uninstalling Driver (Windows XP)

1

start → All Program → SoftBank 203HW Utility → Uninstall

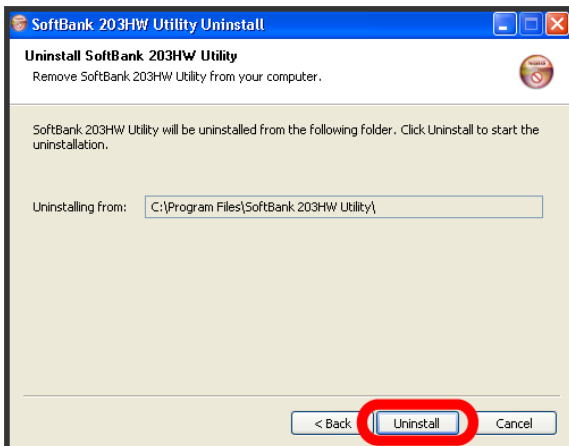
2

Next



3

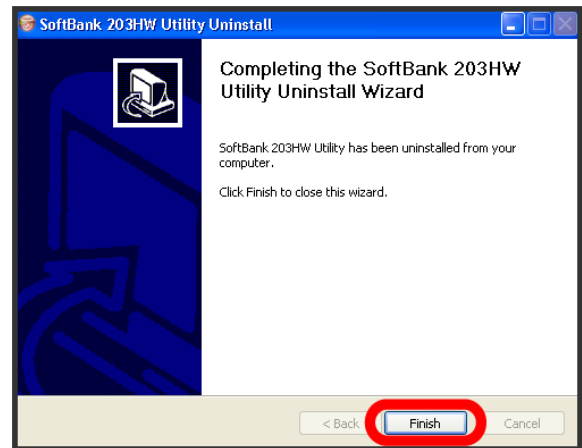
Uninstall



Uninstallation starts.

4

Finish



When complete, "SoftBank 203HW Utility" icon disappears from Desktop.

### Notes on Installation

#### Removing

Do not remove wireless modem during installation. May cause failure of installation, system shutdown or other abnormality.

#### Administrative Privileges

Log in as Administrator.

#### User Account Control

"User Account Control" may appear depending on settings of the operating system when installing/uninstalling in Windows 8/Windows 7/Windows Vista. Select "Yes" or "Allow," and continue to the next steps.

#### Language During Installation

Language on installer depends on language setting of Windows operating system.

## Dial-Up Connection (Windows PC)

Phone number and account information for the access point are required to set a new dial-up connection. Contact internet service provider (ISP) or network administrator to get information in advance.

SoftBank 203HW Utility is not available while connected to Internet via dial-up line.

### Dial-Up Connection (Windows 8)

1

Power on PC and activate operating system

2

Control Panel → Network and Internet → Network and Sharing Center → Set up a new connection or network

3

Select "Connect to the Internet" as a connecting option, then Next

4

Dial-up as method

· A device selection window appears if other modems or terminal adapters are installed. Select wireless modem ("Modem - HUAWEI Mobile Connect - Modem (COMXX)").

5

Enter phone number and account information provided by ISP or network administrator, then Connect

6

In connection window, Skip → Close

7

In "Network and Sharing Center," Change adapter settings → Select created access point icon, then Properties

8

In "Options"/"Security"/"Networking"/"Sharing" tabs in Properties window, make necessary settings for connection as provided from ISP or network administrator

9

In "General" tab in Properties window, check if "Connection using" is "Modem - HUAWEI Mobile Connect - Modem (COMXX)," and if "Phone number" is correctly set as entered in step 5, then mark "Use dialing rules," Dialing Rules → Save/edit location information, then OK → OK in Properties window

10

charm → Network and Sharing Center → Connect in Dial-up Connection

11

In connection window, Dial

Wireless modem connects via dial-up line.

## Dial-Up Connection (Windows 7)

1

Power on PC and activate operating system

2

Start → Control Panel → View network status and tasks → Set up a new connection or network

3

Select "Connect to the Internet," then Next

4

Select "Dial-up"

5

Enter phone number and account information provided by ISP or network administrator, then Connect

6

In connection window, Skip → Close

7

In "Network and Sharing Center," Change adapter settings → Right-click created access point icon → Properties

8

In "Options"/"Security"/"Networking"/"Sharing" tabs in Properties window, make necessary settings for connection as provided from ISP or network administrator

9

In "General" tab in Properties window, check if "Connection using" is "Modem - HUAWEI Mobile Connect - Modem (COMXX)," and if "Phone number" is correctly set as entered in step 5, then mark "Use dialing rules," Dialing Rules → Save/edit location information, then OK → OK in Properties window

10

Right-click created access point icon in Network Connection window → Connect

11

In connection window, Dial

📶 Wireless modem connects via dial-up line.

## Dial-Up Connection (Windows Vista)

1

Power on PC and activate operating system

2

Start → Control Panel → View network status and tasks → Set up a connection or network

3

Select "Set up a dial up connection," then Next

4

Enter phone number and account information provided by ISP or network administrator, then Connect

5

In connection window, Skip → Select "Set up the connection anyway," then Close

6

In "Network and Sharing Center," Manage network connection → Right-click created access point icon → Properties

7

In "Options"/"Security"/"Networking"/"Sharing" tabs in Properties window, make necessary settings for connection as provided from ISP or network administrator

8

In "General" tab in Properties window, check if "Connection using" is "Modem - HUAWEI Mobile Connect - Modem (COMXX)," and if "Phone number" is correctly set as entered in step 4, then mark "Use dialing rules," Dialing Rules → Save/edit location information, then OK → OK in Properties window

9

Right-click created access point icon in Network Connection window → Connect

10

In connection window, Dial

📶 Wireless modem connects via dial-up line.

## Dial-Up Connection (Windows XP)

**1**

Power on PC and activate operating system

**2**

start → Control Panel → Network and Internet  
Connections → Network Connections → Create a new  
connection

**3**

In New Connection wizard, Next

**4**

Select "Connect to the Internet," then Next

**5**

Select "Set up my connection manually," then Next

**6**

Select "Connect using a dial-up modem," then Next

· A device selection window appears if other modems or terminal adapters are installed. Select wireless modem ("Modem - HUAWEI Mobile Connect - Modem (COMXX)").

**7**

Enter ISP name provided by ISP or network administrator, then Next

**8**

Enter phone number provided by ISP or network administrator, then Next

**9**

Enter account information provided by ISP or network administrator, then Next

**10**

Finish → Cancel in connection window → Right-click  
created access point icon in Network Connection window →  
Properties

**11**

In "Options"/"Security"/"Networking"/"Sharing" tabs in Properties window, make necessary settings for connection as provided from ISP or network administrator

**12**

In "General" tab in Properties window, check if "Connection Method" is "Modem-HUAWEI Mobile Connect Modem (COMXX)," and if "Phone Number" is correctly set as entered in step **8**, then mark "Use Dial Information," Dial Information → Save/edit location information, then OK → OK in Properties window

**13**

Right-click created access point icon in Network Connection window → Connect

**14**

In connection window, Dial

Wireless modem connects via dial-up line.



## Setting Up Mac

Device Recognition/Removal on Mac.....	30
Software Installation (Mac).....	31

## Device Recognition/Removal on Mac

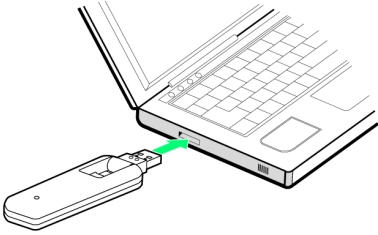
### Device Recognition (Mac)

1

Power on Mac

2


Connect wireless modem into USB port of Mac

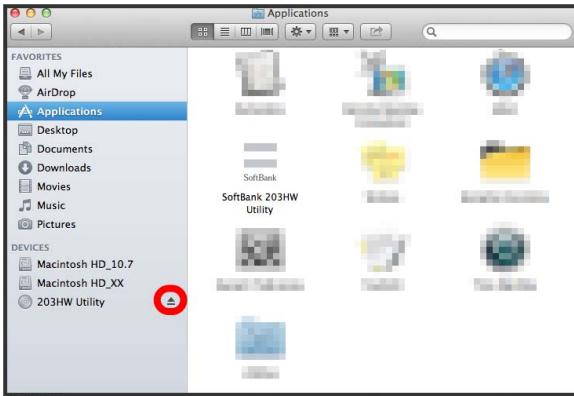



Mac recognizes wireless modem (it takes a while).

### Device Removal (Mac)

1

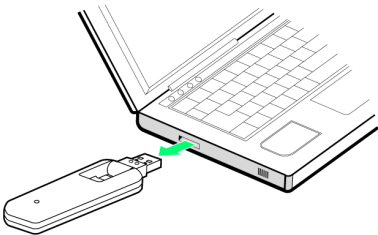
DEVICE → Click eject icon (  ) of wireless modem



· When Memory Card is installed in wireless modem, Click eject icon (  ) of Memory Card first.

2

Remove wireless modem from Mac



Device removal is complete.

### Notes on Device Removal

#### Operation During Sleep Mode

Wireless modem may malfunction if Mac enters sleep mode with it connected. Make sure to remove wireless modem before Mac goes into sleep mode. Wireless modem may malfunction if Mac restarts or is turned on with it connected. Remove wireless modem before activating Mac.

#### SoftBank 203HW Utility

Exit SoftBank 203HW Utility before removing wireless modem from Mac. Do not remove wireless modem from Mac during data communication.



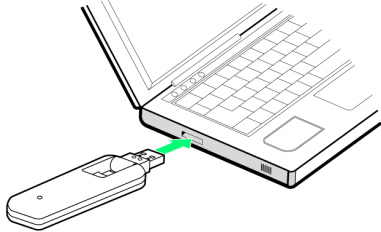
# Software Installation (Mac)

Screenshots and steps described here are for Mac OS X 10.8. Windows and messages may vary by OS version.

## Driver Installation (Mac)

1

Connect wireless modem to USB port of Mac



Shortcut icon appears on desktop and "203HW Utility" folder automatically opens.

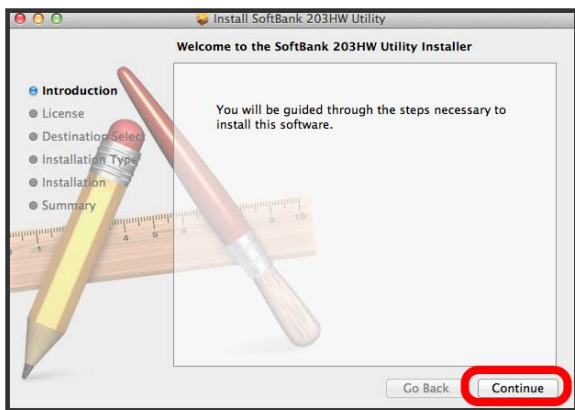
2

Double-click "SoftBank 203HW Utility"



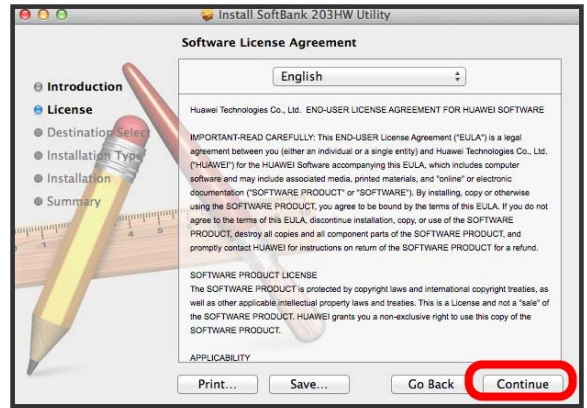
3

Continue



4

Continue



5

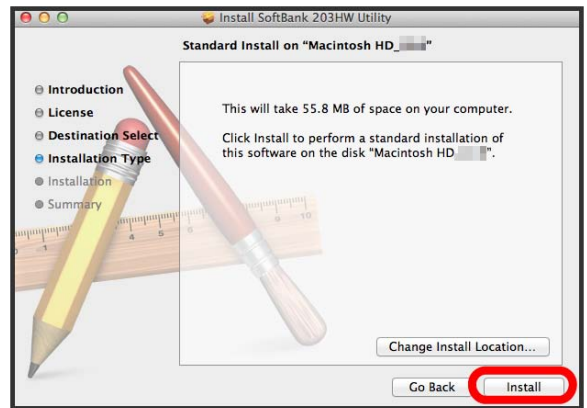
Agree



If "Destination Select" dialog box appears, select installation location and Click **Continue** .

6

Install



7

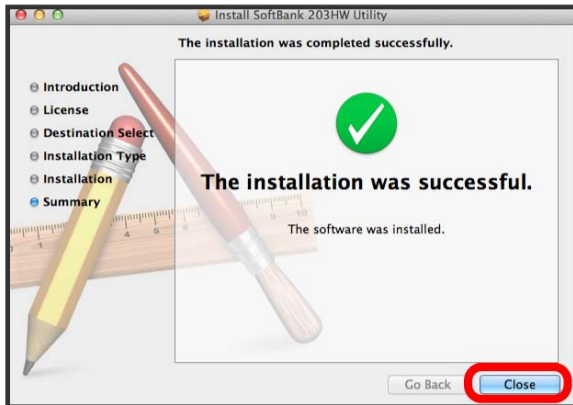
Enter Name (user name) and Password and [Install Software](#)



Installation starts.

8

[Close](#)



When complete, "SoftBank 203HW Utility" icon appears in Dock.

## Manual Installation (Mac)

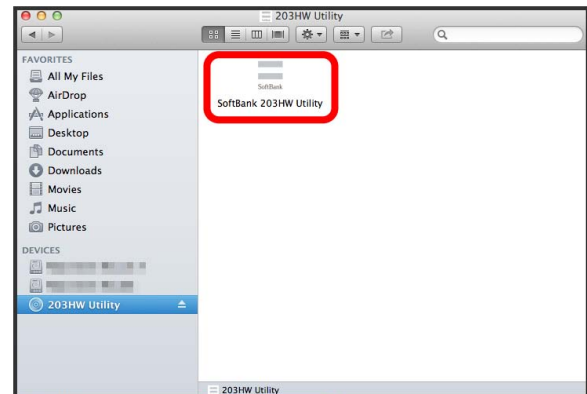
If installation fails to start automatically after connecting wireless modem, follow these steps.

1

→ DEVICE → Click "203HW Utility"

2

Double-click "SoftBank 203HW Utility"



3

See "[Driver Installation \(Mac\)](#)" Step [3](#) and later

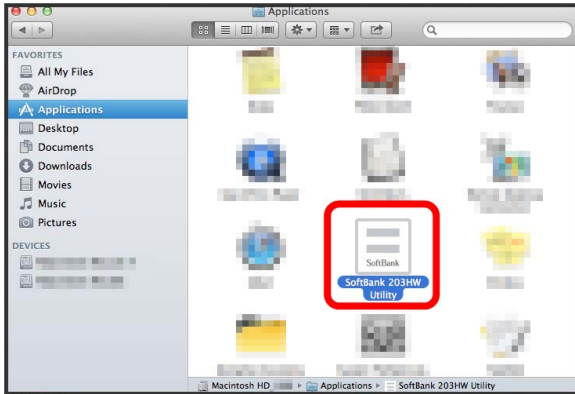
When complete, "SoftBank 203HW Utility" icon appears in Dock.

## Uninstalling Driver (Mac)

Follow these steps to uninstall (delete) "SoftBank 203HW Utility" from Mac if you do not need it any more.

1

Applications → Drag "SoftBank 203HW Utility" into Trash

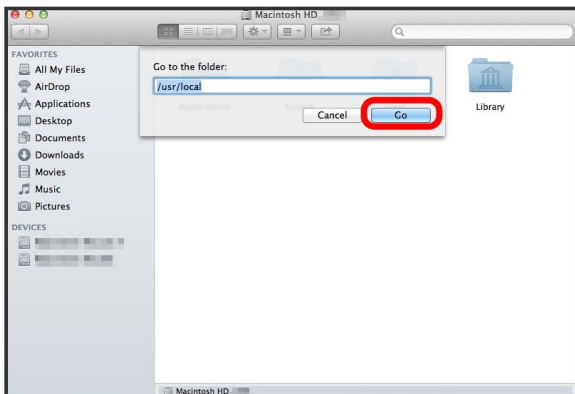


2

In Dock, "SoftBank 203HW Utility" → Options → Remove from Dock

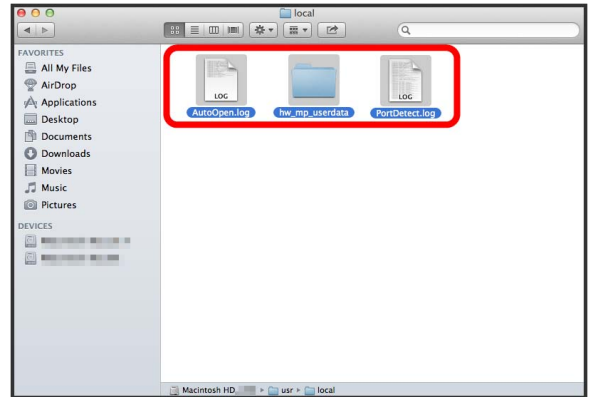
3

Macintosh HD → Go → Go to Folder... → Enter "/usr/local," then Go



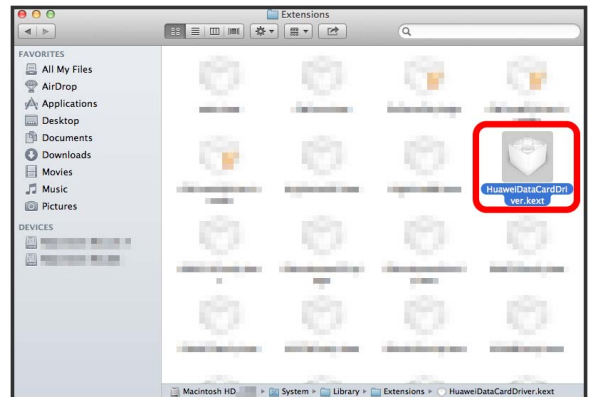
4

Drag related user data (AutoOpen.log, PortDetect.log, hw\_mp\_userdata folder) into Trash



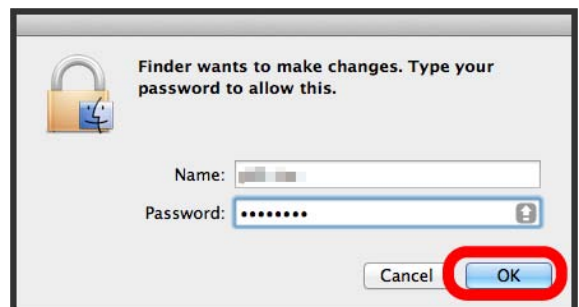
5

Macintosh HD → System → Library → Extensions → Drag "HuaweiDataCardDriver.kext" into Trash



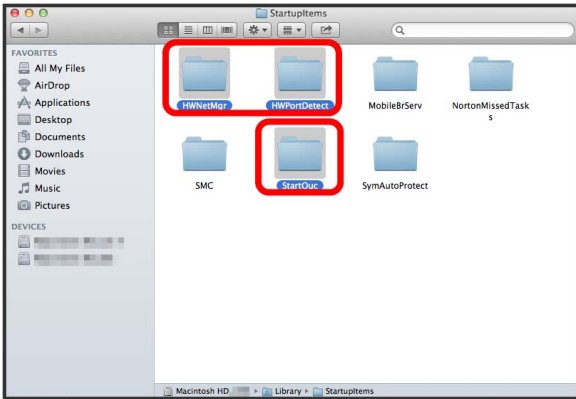
6

Enter user name and password → OK



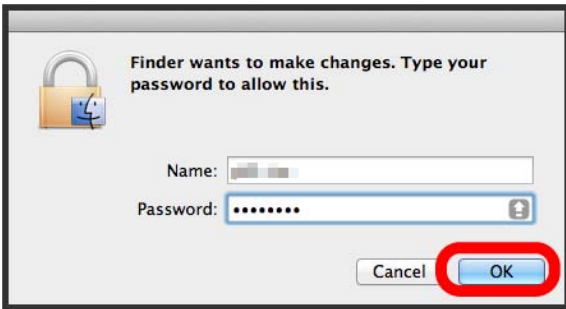
7

Macintosh HD → Library → StartupItems → Drag related folders (HWNetMgr folder, HWPoortDetect folder, StartOuc folder) into Trash



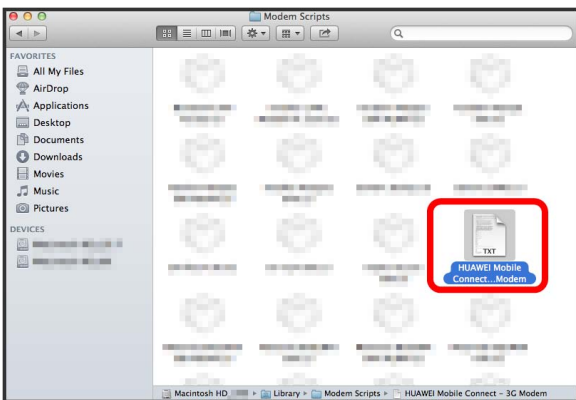
8

Enter user name and password → OK



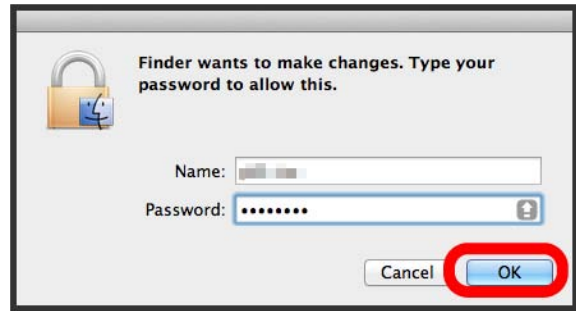
9

Macintosh HD → Library → Modem Scripts → Drag "HUAWEI Mobile Connect - 3G Modem" into Trash



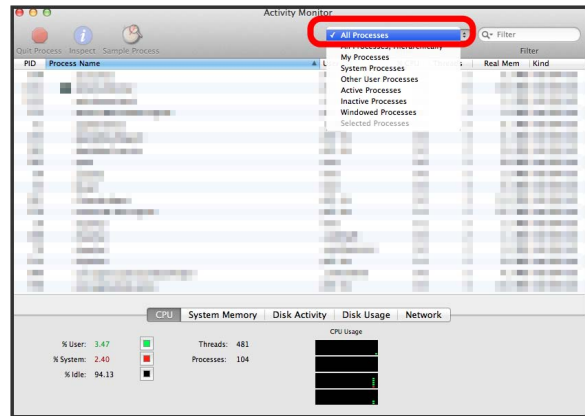
10

Enter user name and password → OK



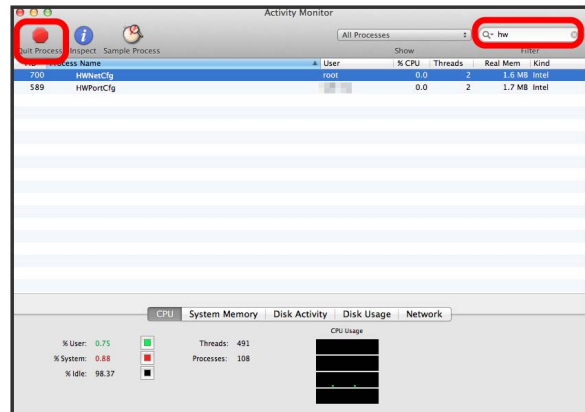
11

Macintosh HD → Applications → Utilities → Select All Processes in "Activity Monitor"



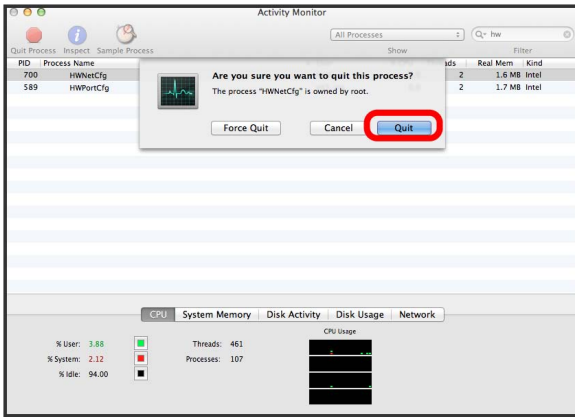
12

Search "hw" → Select HWNetCfg → Quit Process



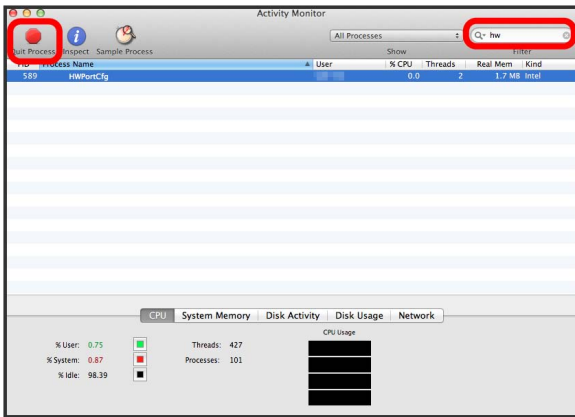
13

Quit



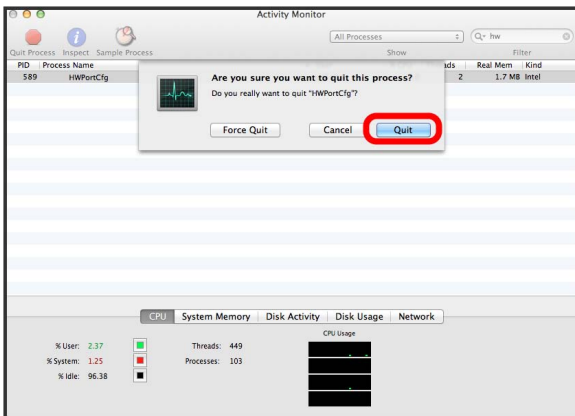
14

Search "hw" → Select HWPortCfg → Quit Process



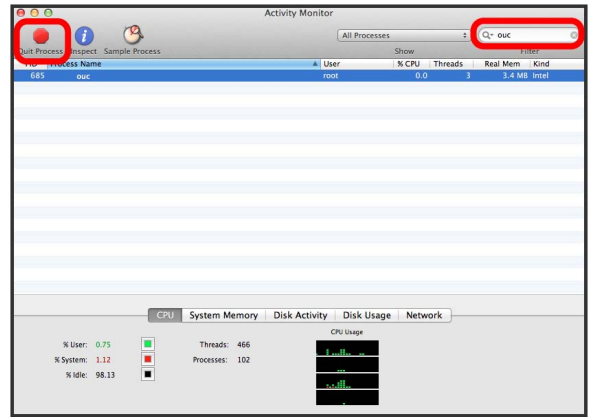
15

Quit



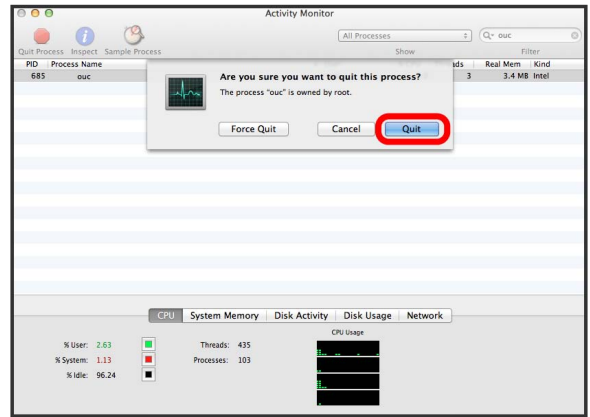
16

Search "ouc" → Select OUC → Quit Process



17

Quit



18

Empty Trash → Empty Trash



When complete, Trash becomes empty.

### Notes on Installation

#### Removing

Do not remove wireless modem during installation. May cause failure of installation, system shutdown or other abnormality.

#### Administrative Privileges

Login as Administrator.



## SoftBank 203HW Utility

SoftBank 203HW Utility Overview.....	38
Connecting/Disconnecting to/from Internet.....	38
Setting via SoftBank 203HW Utility.....	40
Updating Software.....	49

## SoftBank 203HW Utility Overview

"SoftBank 203HW Utility" is software for connecting/disconnecting to/from Internet.

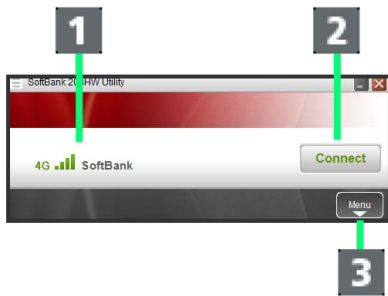
Dial-up connection is not available while using SoftBank 203HW Utility to connect to Internet.

### Activating 203HW Utility

Setting up "SoftBank 203HW Utility" on computer automatically activates "SoftBank 203HW Utility" when wireless modem is connected to computer USB port.

If SoftBank 203HW Utility does not activate automatically, select SoftBank 203HW Utility icon. SoftBank 203HW Utility icon can be selected from task bar (menu bar for Mac) as well.

### SoftBank 203HW Utility Main Page



Item	Description
<b>1</b> Status Indication	Indicates reception, type of connected mobile network (3G/4G) and name of network <b>4G</b> : Connected to SoftBank 4G <b>3G</b> : Connected to 3G (including SoftBank 3G, ULTRA SPEED) <b>GSM</b> : Connected to GSM <b>GPRS</b> : Connected to GPRS <b>EDGE</b> : Connected to EDGE <b>R</b> : Roaming
<b>2</b> Connect/Disconnect	Connect/disconnect to/from network
<b>3</b> Menu Icon	Open menu

## Connecting/Disconnecting to/from Internet

### Connecting

**1**

In SoftBank 203HW Utility Main Page, **Connect**



Computer is connected to Internet.

### Disconnecting

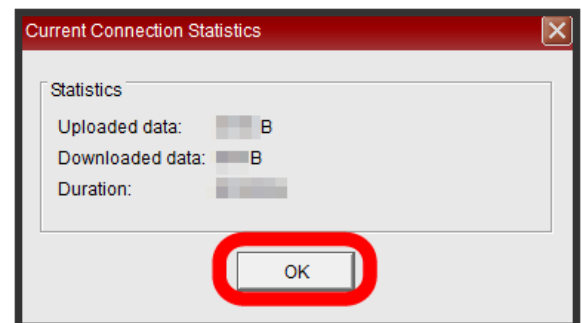
**1**

In SoftBank 203HW Utility Main Page, **Disconnect**



**2**

Check Current Connection Statistics **OK**



Screen returns to SoftBank 203HW Utility Main Page.




## Checking Communication History

Check Communication History and the monthly accumulation.

- Changing time set on computer during connection may affect connection time indicator.
- Connection history will be deleted automatically after an elapse of three months.
- History is provided for reference only. Actual connection data may differ from history.


### 1

In SoftBank 203HW Utility Main Page, 

 Menu opens.

### 2

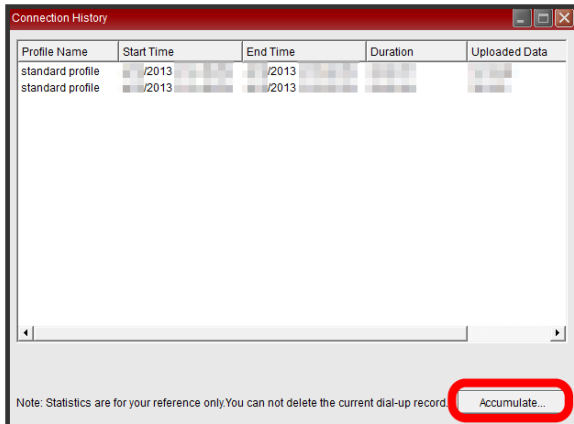
In Menu,   

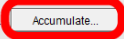
 Connection history appears.

- Select lines or select all to delete connection history.





### 3

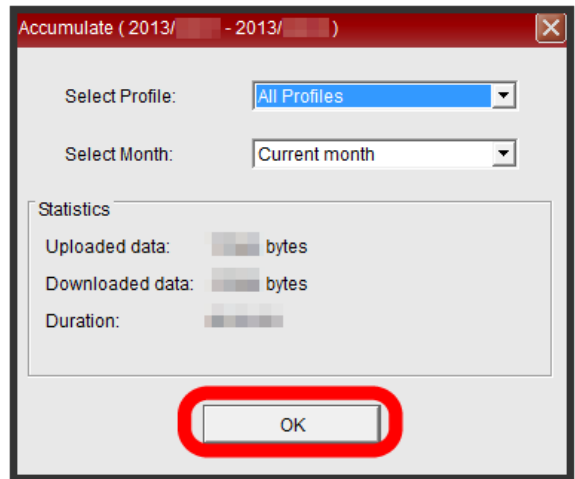





Note: Statistics are for your reference only. You can not delete the current dial-up record. 

### 4

Check  /   



 Screen returns to SoftBank 203HW Utility Main Page.

## Setting via SoftBank 203HW Utility


### Opening Menu

To make settings via SoftBank 203HW Utility, select each item from Menu and make settings in each page.

1

In SoftBank 203HW Utility Main Page, 




 Menu opens.

### Setting Auto Connection

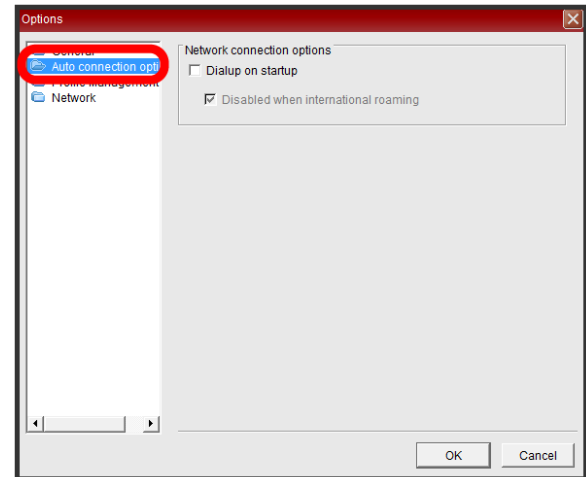
1

In Menu, 


 Options window appears.

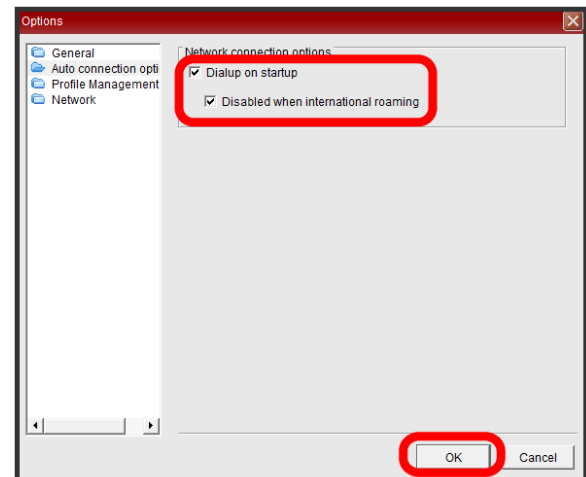
2


 in navigation tree



3

Mark  /   
roaming  



 Screen returns to SoftBank 203HW Utility Main Page.

## Creating Profile

Contact your service provider for accurate entry information.

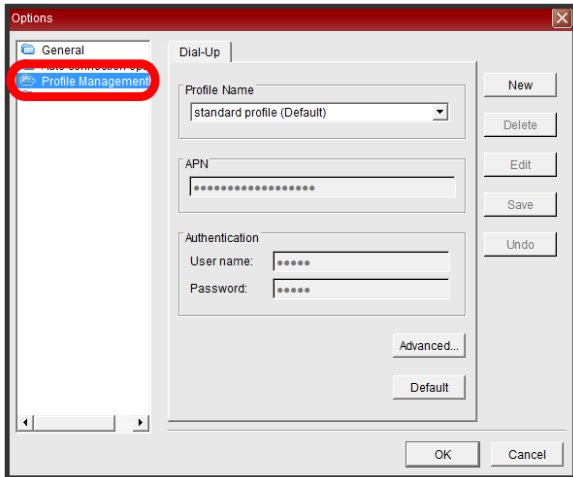
1

In Menu, **Options...**

Options window appears.

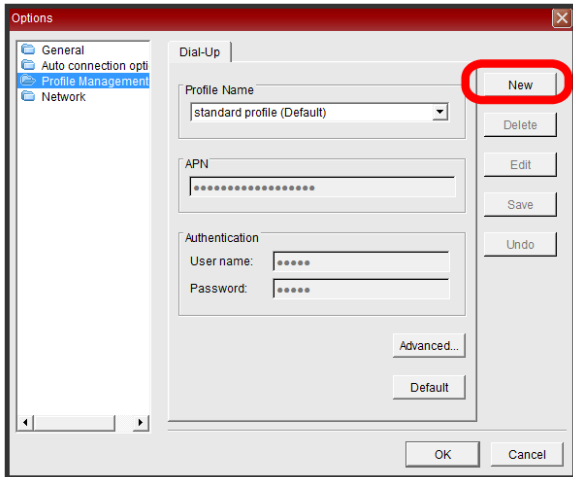
2

**Profile Management** in navigation tree



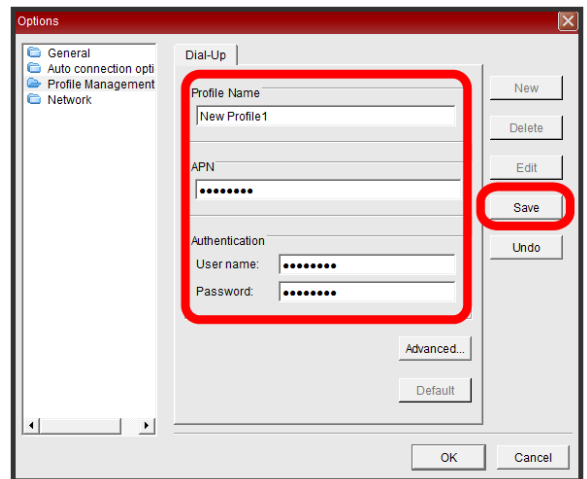
3

**New**



4

Enter Profile Name, APN, Authentication → **Save**



New profile is saved.

- For Windows, select **Advanced...**, then make IP Settings, Authentication Protocol Settings, DNS Settings and WINS Settings as required. For Mac, Authentication Protocol Settings is available.
- To set new profile as default, select **Default**.

## Editing Profile

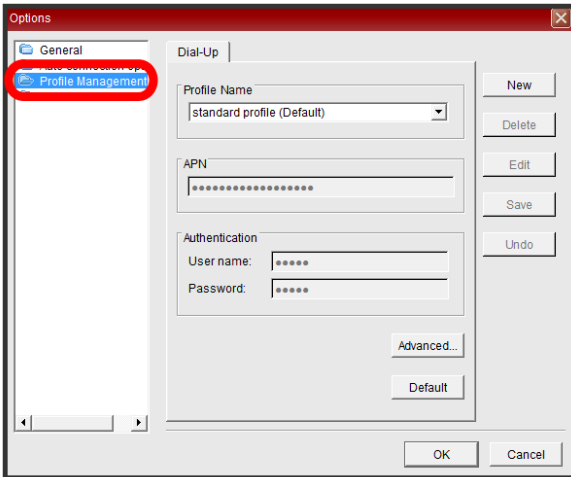
1

In Menu, **Options...**

Options window appears.

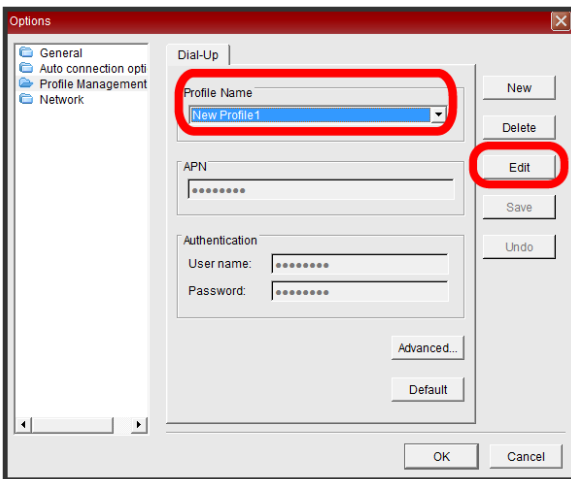
2

**Profile Management** in navigation tree



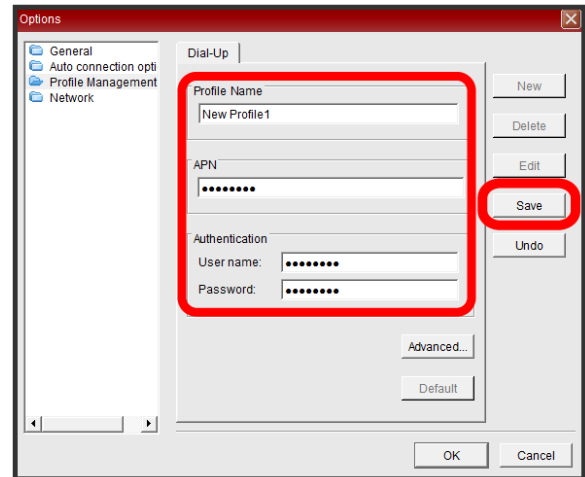
3

Select Profile Name to edit → **Edit**



4

Enter entry information to edit → **Save**



Profile is edited.

## Changing Default Access Point

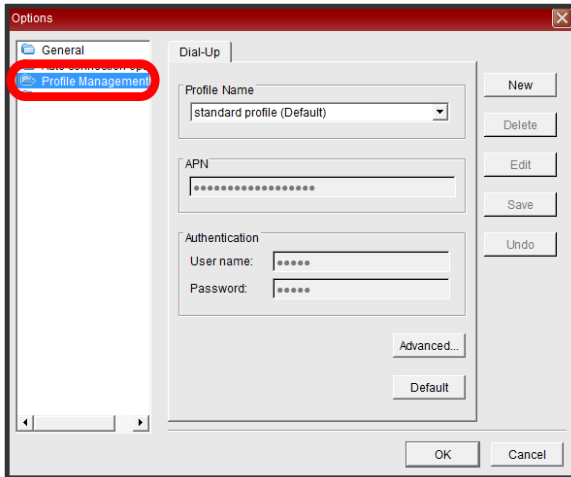
1

In Menu, **Options...**

Options window appears.

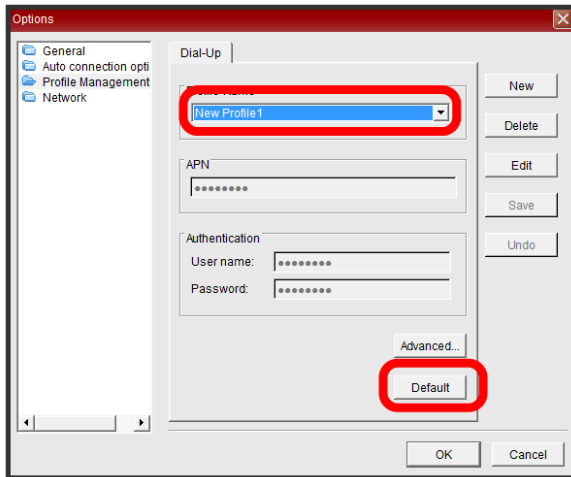
2

**Profile Management** in navigation tree



3

Select Profile Name to set as default → **Default**



Default setting is changed.

· (Default) appears on the Profile Name.

## Deleting Profile

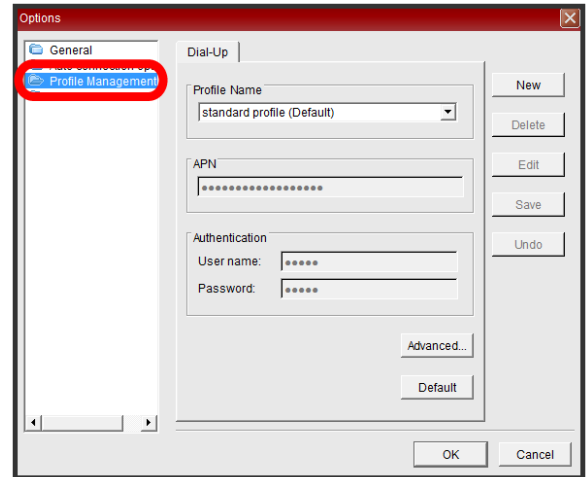
1

In Menu, **Options...**

Options window appears.

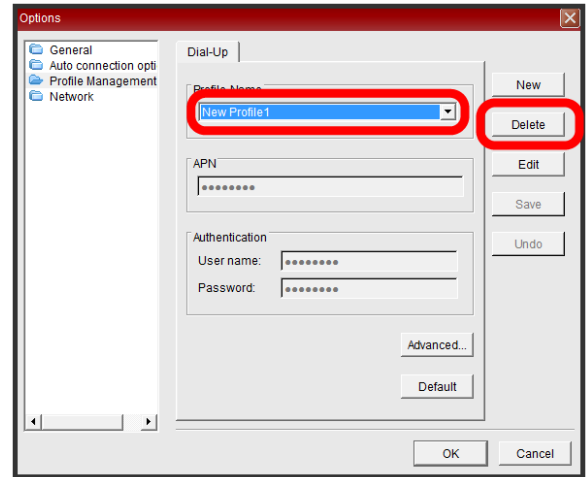
2

**Profile Management** in navigation tree



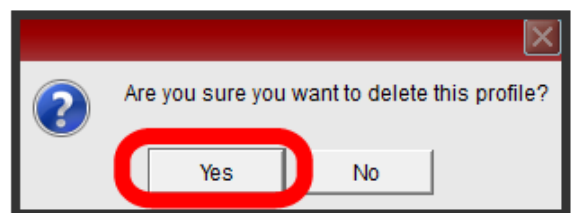
3

Select Profile Name to delete → **Delete**



4

Yes




Profile is deleted.

## Selecting Network

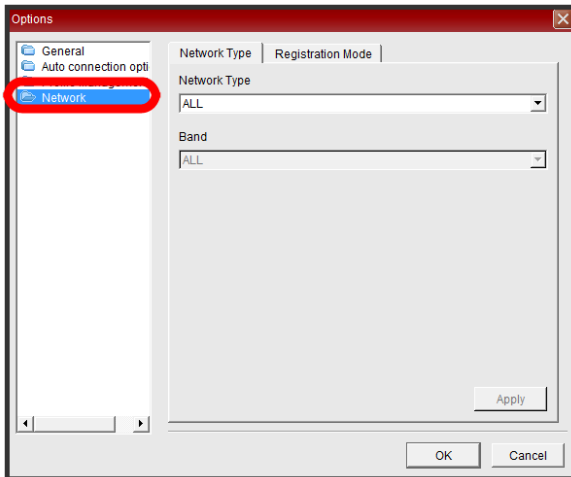
1

In Menu, **Options...**

 Options window appears.

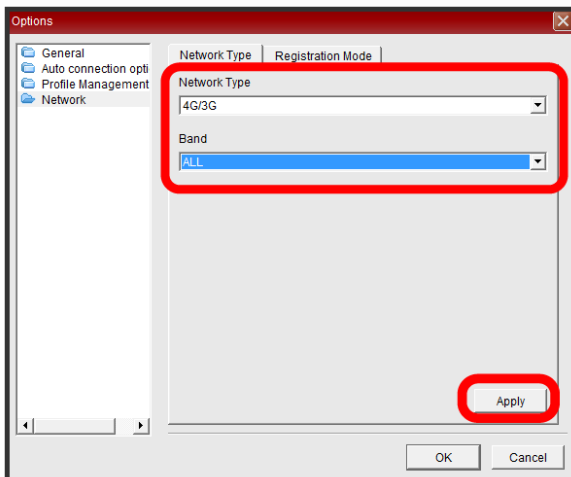
2


**Network** in navigation tree



3

Select "Network Type" tab → **Network Type** / **Band** → **Apply**




 Network Type and Band are changed.

· Band is available when networks including SoftBank 3G are selected in Network Type. In other case, leave Band as is.

## Setting Registration Mode

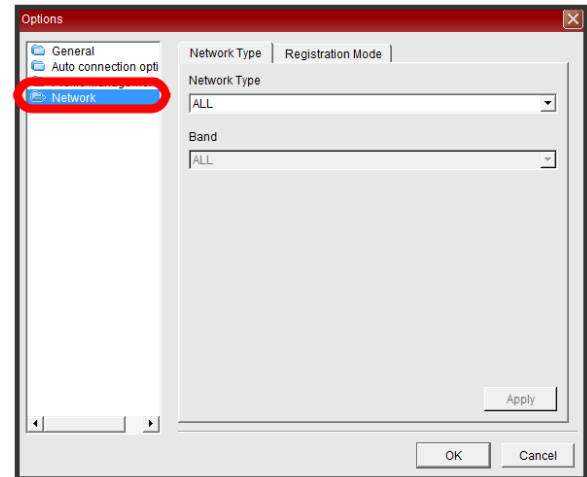
1

In Menu, **Options...**

 Options window appears.

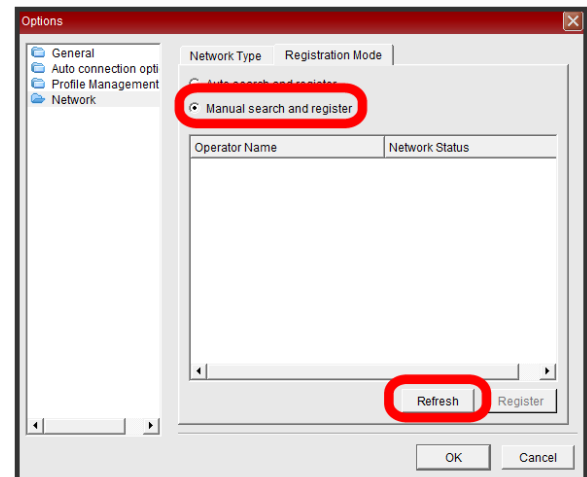
2


**Network** in navigation tree



3

In "Registration Mode" tab, **Manual search and register** → **Refresh**

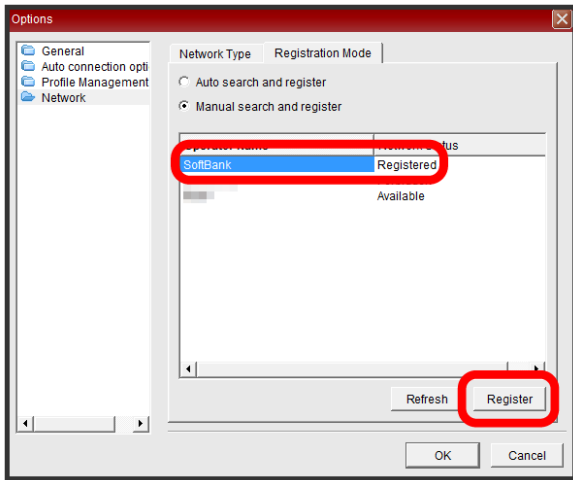


 Networks are re-searched.

· Setting Registration Mode to **Auto search and register** automatically connects to an available network. Skip the next step.

4

Select Operator Name → Register



Network is registered.

- If **Manual search and register** is set for Registration Mode, select network manually when wireless modem is out of service area, etc.

## Setting Startup Preference

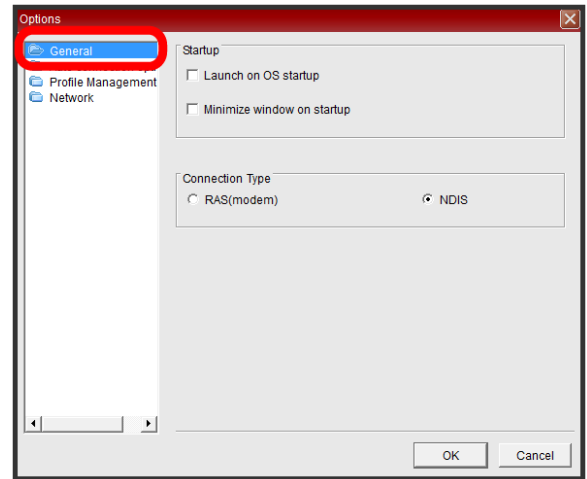
1

In Menu, **Options...**

Options window appears.

2

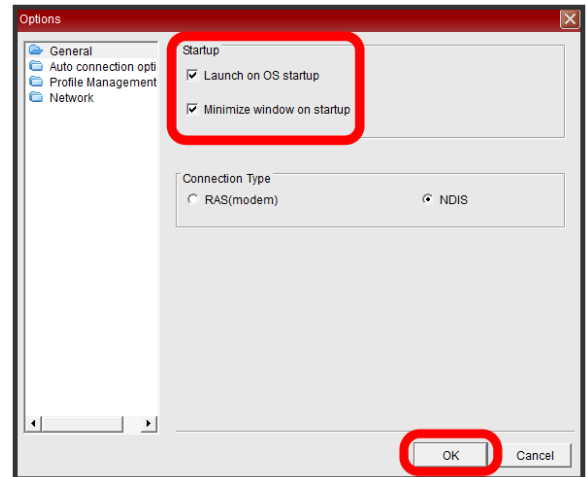
**General** in navigation tree



3

**Launch on OS startup** / **Minimize window on startup** →

**OK**



Screen returns to SoftBank 203HW Utility Main Page.

## Setting Language

Change language setting of SoftBank 203HW Utility.

1

In Menu, **Language** → **English** / **日本語**

Screen returns to SoftBank 203HW Utility Main Page.

· Order of language menu depends on language setting of Windows operating system. However for Mac, it is always shown as **English** / **日本語**.

## Enabling PIN Authentication

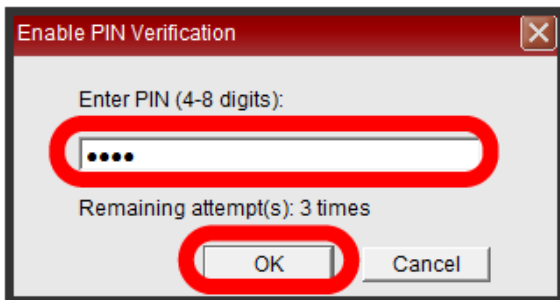
Set whether to show Verify PIN window when connecting wireless modem to a computer.

1

In Menu, **PIN Operations** → **Enable PIN Verification...**

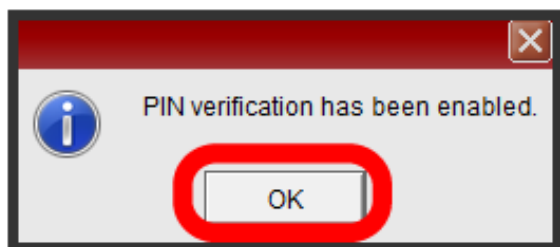
2

Enter PIN → **OK**



3

**OK**



Screen returns to SoftBank 203HW Utility Main Page.

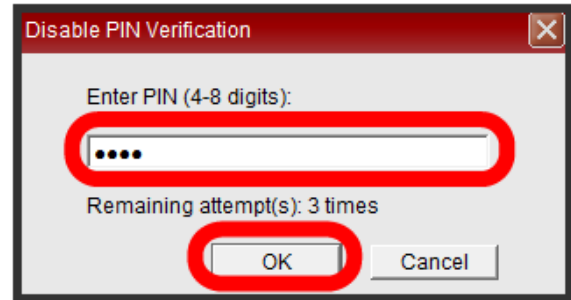
## Disabling PIN Authentication

1

In Menu, **PIN Operations** → **Disable PIN Verification...**

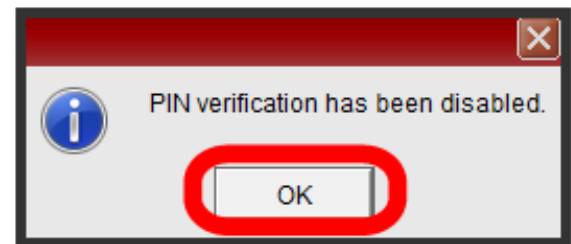
2

Enter PIN → **OK**



3

**OK**



Screen returns to SoftBank 203HW Utility Main Page.



## Changing PIN

PIN can be changed only when PIN authentication is enabled.

1

In Menu, **PIN Operations** → **Modify PIN...**

2

Enter Current PIN/New PIN/New PIN (again) → **OK**

3

**OK**

Screen returns to SoftBank 203HW Utility Main Page.

## Verifying PIN

If PIN authentication is enabled, Verify PIN window appears when wireless modem is re-connected to computer and recognized.

1

Enter correct PIN in Verify PIN window → **OK**

PIN is verified, and SoftBank 203HW Utility Main Page appears.

## Unlocking PIN Lock

Incorrectly entering PIN three consecutive times activates PIN Lock, and requires PIN Unlocking Key (PUK Code).

- For details about PUK Code, contact [SoftBank Customer Support](#), General Information.
- Incorrectly entering PUK Code ten consecutive times locks wireless modem completely, and requires new USIM Card. Contact [SoftBank Customer Support](#), General Information. Prescribed fee applies.

1

Enter PUK input/New PIN/New PIN (again) in Unlock PIN window → **OK**

PIN lock is unlocked, and SoftBank 203HW Utility Main Page appears.

- If "User Account Control" appears, select "Yes."

## Checking Version Information

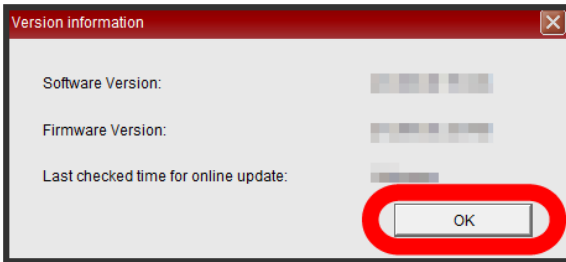
1

In Menu, **Version information...**

Version information window appears.

2

Confirm information → **OK**



Screen returns to SoftBank 203HW Utility Main Page.

## Checking Phone Number

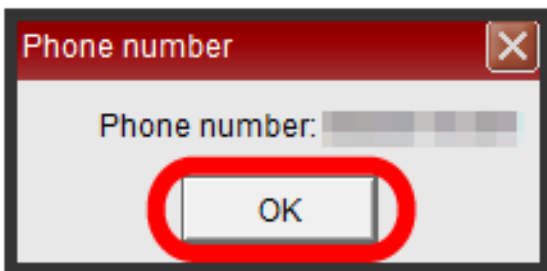
1

In Menu, **Phone Number...**

Phone number window appears.

2

Confirm information → **OK**



Screen returns to SoftBank 203HW Utility Main Page.

## Resetting

Restore all wireless modem settings to their factory defaults.

- If you changed settings, set them again.
- USIM Card contents remain.

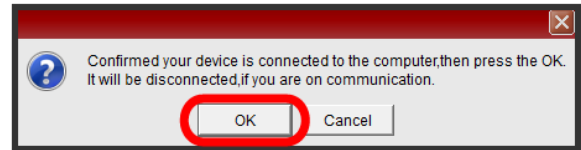
1

In Menu, **Restore as Factory Default Setting**

Confirmation window for restoring settings appears.

2

**OK**



All settings are restored to their factory defaults.

- When complete, wireless modem reboots and SoftBank 203HW Utility Main Page appears.

## Checking Online Help

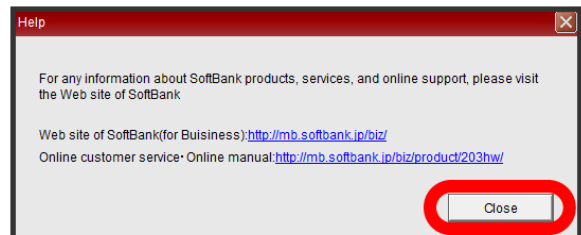
1

In Menu, **Online Help...**

URL of the customer support site for wireless modem appears. Selecting URL opens SoftBank Support information page.

2

Confirm information → **Close**



Screen returns to SoftBank 203HW Utility Main Page.

## Checking Utility

1

In Menu, **About SoftBank 203HW Utility...**

Notes on version and the copyright of SoftBank 203HW Utility appear.

2

Confirm information → **OK**



Screen returns to SoftBank 203HW Utility Main Page.

## Updating Software

### Updating SoftBank 203HW Utility Software

Detect and download software update, and update wireless modem using SoftBank 203HW Utility.

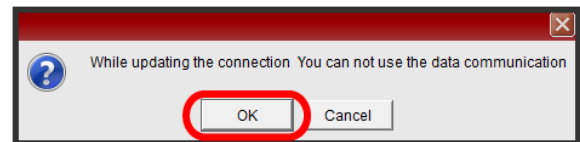
- Operating Online Update during data transfer stops data transfer.
- Online Update is not available outside Japan.

1

In Menu, **Online Update**

2

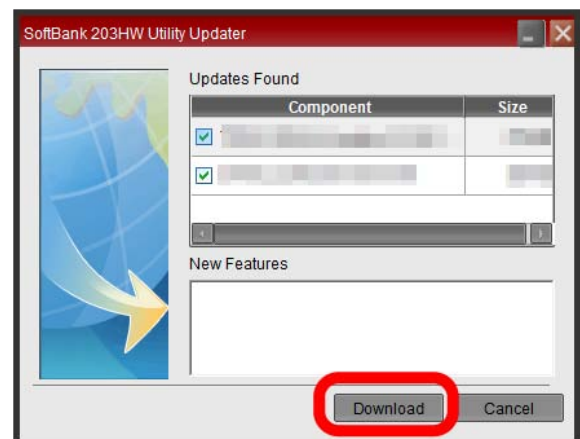
**OK**



Available software update is checked for.

3

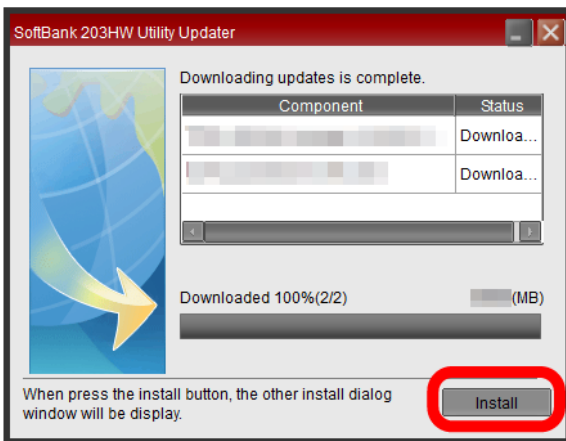
**Download**



Updated software is downloaded.

## 4

## Install

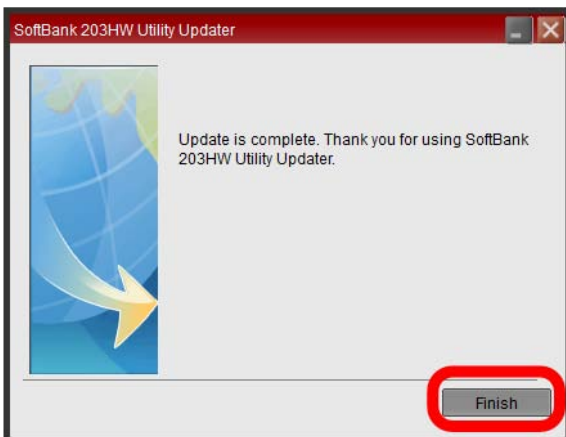


Update Wizard appears in a new window. Follow the on-screen instructions and Click **Finish** on Update Wizard.

- Update Wizard may appear repeatedly depending on number of detected updates.

## 5

## Finish



Software on wireless modem is updated and wireless modem reboots.

- After rebooting wireless modem, versions of SoftBank 203HW Utility installed in computer and of wireless modem are checked automatically. For Windows, an old version of SoftBank 203HW Utility is uninstalled before installation of new software starts. For Mac, installation of new SoftBank 203HW Utility starts. For instructions on uninstallation and installation, see "[Software Installation \(Windows PC\)](#)," "[Software Installation \(Mac\)](#)."

## Troubleshooting

Troubleshooting.....	52
Specifications.....	54
Warranty & Service.....	55
Customer Service.....	55


## Troubleshooting

### Troubleshooting

Check the following Q & A. If problem persists, visit your nearest SoftBank Shop or contact [SoftBank Customer Support](#), General Information.

### ? Problems

- Q. Computer does not recognize wireless modem
- A. Confirm that wireless modem is properly connected to computer.
- A. Remove wireless modem from computer, restart computer, then reconnect wireless modem.
- A. Make sure that "HUAWEI Mass Storage USB Device," "HUAWEI Mobile Connect - Extra Control Device," "HUAWEI TF CARD Storage USB Device," "HUAWEI Mobile Connect - Network Card," "HUAWEI Mobile Connect - PC UI Interface(COMxx)," "HUAWEI Mobile Connect - Modem," "HUAWEI Enumerator Device," "HUAWEI Mobile Connect - Bus Enumerate Device," "USB Composite Device," and "USB Mass Storage Device" are shown in "Device manager" of your Windows PC.

For Windows 8: On the Desktop screen, Swipe in from the right edge (with a mouse, move your pointer into the upper-right or lower-right corner) →  charm

→ Control Panel → System and Security → Device Manager

For Windows 7: Right-click Computer → Properties → Advanced system settings → Hardware → Device Manager

For Windows Vista: Right-click Computer → Properties → Advanced system settings → Hardware → Device Manager

For Windows XP: Right-click My Computer → Properties → Hardware → Device Manager

- Q. Installer does not automatically activate (Windows PC)
- A. New hardware recognition takes a few seconds. If installer does not automatically activate, remove wireless modem from PC, then reconnect to PC.
- A. Install driver manually. See "[Manual Installation \(Windows 8\)](#)," "[Manual Installation \(Windows 7\)](#)," "[Manual Installation \(Windows Vista\)](#)," "[Manual Installation \(Windows XP\)](#)" for installation.

- Q. Internet connection fails
- A. Make sure you are within the service area.
- A. If signal reception is poor, move to where signal is strong, then reconnect.
- A. The access point might be busy depending on the time of day, wait a little while then reconnect.
- A. Activate SoftBank 203HW Utility and confirm that network settings are correct.
- A. If temperature of wireless modem remains high for a long time, communication speed may decrease or communication may stop. Try to connect after a while.

Q. Transmission fails

- A. Confirm that wireless modem and computer are properly connected.
- A. Signal may be weak. Move to where signal is stronger.
- A. Re-connect wireless modem and computer.

Q. Transmissions are slow

- A. Signal may be weak. Move to where signal is stronger.
- A. Connection may be poor. Try again later.

Q. Forgot PIN/Unknown PUK Code/USIM Card is locked


- A. Contact [SoftBank Customer Support](#), General Information.

Q. USIM Card is not recognized

- A. Make sure USIM Card is inserted correctly. For details, see "[USIM Card Installation](#)."
- A. Check USIM Card for warping.
- A. Check USIM Card IC chip for scratches/corrosion.
- A. Debris on USIM Card (particularly on IC chip) may prevent recognition. Clean it with a soft cloth.
- A. Contact [SoftBank Customer Support](#), General Information.

Q. Confirming Administrator logon

- A. Follow these steps to check.

For Windows 8: On the Desktop screen, Swipe in from right edge (with mouse, move your pointer into upper-right or lower-right corner) →  charm → [Control Panel](#) → [Change account type](#) in User Accounts and Family Safety → Confirm that account type of currently logged in user name is "Administrator."

For Windows 7 and Windows Vista: [Start](#) → [Control Panel](#) → [User Accounts and Family Safety](#) → [User Accounts](#) → Confirm that account type of currently logged in user name is "Administrator."

For Windows XP: [start](#) → Confirm user name at the top of Start menu → [Control Panel](#) → [User Accounts](#) → [User Accounts](#) → Confirm that account type of currently logged in user name is "Administrator."

For Mac: Apple menu → [System Preferences...](#) → [Accounts](#) → Confirm that account type of currently logged in user name is "Admin."

Q. Communication is not available with out of service indicated when moving from Japan to abroad

- A. Restart computer and re-connect with wireless modem.

Q. Resetting factory defaults (Reset)

- A. Use SoftBank 203HW Utility to reset. For details, see "[Resetting](#)."

Q. Canceled phone number appears on SoftBank 203HW Utility

- A. Phone number may appear on SoftBank 203HW Utility depending on terms of contract or cancelation method.

Q. Wireless modem operations are unstable

- A. Confirm that wireless modem is not used in extreme temperatures/high humidity/direct sunlight/dusty areas. Read "[Safety Precautions](#)" beforehand for using under proper environment.
- A. Confirm that improper software is not used. Operation is not guaranteed for Internet connection using software provided by manufacturer other than SoftBank Mobile Corp.

Q. Wireless modem suddenly disabled

- A. Re-connect wireless modem and computer.

## Specifications

### Wireless Modem

Item	Description
Product Name	203HW
Dimensions <sup>1</sup>	89 mm (H) x 31 mm (W) x 13.5 mm (D)
Weight	35 g
Interface	USB 2.0 High Speed (USB terminal) *Compatible with USB2.0 high-speed data transmission (480 Mbps). microSD Card/microSDHC Card/microSDXC Card
Power Consumption <sup>1</sup>	Maximum for communication: 2.5 W Usual for communication: 1.4 W On standby: 0.4 W *Power consumption varies by usage.
Operation Environment	Operating Temperature: -10°C to 40°C Storage Temperature: -20°C to 70°C Humidity: 5% to 95%
Frequency	AXGP: Upstream: 2,545 MHz to 2,575 MHz Downstream: 2,545 MHz to 2,575 MHz 3G: Upstream: 880 MHz to 915 MHz, 1,427.9 MHz to 1,447.9 MHz, 1,920 MHz to 1,980MHz Downstream: 925 MHz to 960 MHz, 1,475.9 MHz to 1,495.9 MHz, 2,110 MHz to 2,170MHz GSM: Upstream: 824 MHz to 849 MHz, 880 MHz to 915 MHz, 1,710 MHz to 1,785 MHz, 1,850 MHz to 1,910 MHz Downstream: 869 MHz to 894 MHz, 925 MHz to 960 MHz, 1,805 MHz to 1,880 MHz, 1,930 MHz to 1,990 MHz
Compatible Networks	Japan: 3G (900 MHz/1.5 GHz/2.1 GHz), AXGP (2.5 GHz) Overseas: 3G (2.1 GHz), GSM (850 MHz/900 MHz/1,800 MHz/1,900 MHz)

<sup>1</sup> Approximate value

### USB Extension Cable (sample)

Item	Description
Length	80 cm
Plug	Standard USB Plug

### Material List (Wireless Modem)

Item	Description
Wireless Modem	PC1414, coating
USB Plug	Stainless steel, Copper + Nickel
Label	3M7815

### Material List (USB Extension Cable)

Item	Description
Cable	PVC
USB Plug	Iron, Nickel plating



## Warranty & Service

### Warranty

Wireless modem purchase includes Warranty.

- Confirm shop name and purchase date.
- Read contents of Warranty and keep it in a safe place.
- The warranty period can be found in the Warranty.

SoftBank Mobile Corp. is not liable for any damages or loss resulting from use of wireless modem.

### When requesting repair

See "[Troubleshooting](#)" before contacting SoftBank Mobile Corp. for service or repair.

If you cannot find solutions or solve problems, contact [SoftBank Customer Support](#), or a SoftBank Shop nearby. Be able to provide a detailed description of the problem.

- During the warranty period, repairs will be made under the terms and conditions described in the warranty.
- After the warranty period, repairs will be upon request; if said repairs can be made, you will be charged for them.

## Customer Service


For application or service information, call SoftBank Technical Support Center.

### SoftBank Customer Support

#### General Information

From a SoftBank handset, dial toll free at 157


From a landline/IP Phone, dial toll free at

 0800-919-0157

#### For Customer Assistance

From a SoftBank handset, dial toll free at 113

From a landline/IP Phone, dial toll free at

 0800-919-0113

If you cannot reach a toll free number, use the number (charges apply) below for your service area:

Hokkaido Area, Tohoku Area, Hokuriku Area, Kanto & Koshinetsu Area 022-380-4380

Tokai Area 052-388-2002

Kansai Area 06-7669-0180

Chugoku & Shikoku Area, Kyushu & Okinawa Area 092-687-0010

### SoftBank Technical Support Center


Setup, Operations & Technical Issues:

- Service Hours

Weekday: 9:00 am - 7:00 pm

Saturday, Sunday, Holiday: 9:00 am - 5:00 pm

From a SoftBank handset, dial toll free at \*5525

From a landline/IP Phone, dial toll free at  0088-21-5525

- These numbers cannot be dialed from outside Japan.

### SoftBank Mobile Global Call Center

From outside Japan or if 203HW is lost or stolen:

+81-3-5351-3491 (international charges apply, toll free from SoftBank handsets)



## Safety Precautions

Safety Precautions.....	58
General Notes.....	63
Specific Absorption Rate (SAR) Information for this Product.....	64

## Safety Precautions




Read safety precautions before using wireless modem. And then keep it in a safe place.

Observe precautions to avoid injury to self or others, or damage to property.

SoftBank Mobile Corp. is not liable for any damages resulting from use of this product.






### Labels & Symbols

These labels indicate the degree of risk from improper use. Make sure you thoroughly understand their meanings before reading on.

Mark	Descriptions
 <b>DANGER</b>	Great risk of death or serious injury <sup>1</sup> from improper use
 <b>WARNING</b>	Risk of death or serious injury <sup>1</sup> from improper use
 <b>CAUTION</b>	Risk of minor injury <sup>2</sup> or damage to property <sup>3</sup> from improper use

- 1 Serious injury includes: Loss of eyesight, physical injury, high temperature burns, low temperature burns, electric shock, fractures, poisoning and other conditions having side effects or requiring hospitalization or long-term treatment.
- 2 Injury includes: Physical burns, electric shock, and other conditions not requiring hospitalization or long-term treatment.
- 3 Damage to property includes: Incidental damage to structures and household property and/or to pets and livestock.

These symbols indicate prohibited or compulsory actions. Make sure you thoroughly understand their meanings before reading on.

Mark	Descriptions
 Prohibited	Prohibited actions
 Do Not Disassemble	Disassembly prohibited
 Avoid Liquids Or Moisture	Exposure to liquids prohibited
 Do Not Use Wet Hands	Use with wet hands prohibited
 Compulsory	Compulsory actions

### Wireless Modem, USIM Card, USB Extension Cable (Sample)

#### DANGER



Do Not Disassemble

Do not disassemble, modify or solder.

May cause fire, injury, electric shock or malfunction. Modifying wireless modem is prohibited by the Radio Law and subject to penalty.



Avoid Liquids Or Moisture

Keep away from water.

Do not let liquid-exposed (water, pet urine, etc.) wireless modem/related hardware remain wet; Doing so may cause overheating, electric shock, fire, injury or malfunction. Use wireless modem/related hardware properly/where appropriate.



Prohibited

Do not use/expose wireless modem/related hardware to extreme heat (e.g. near fire or source of heat, in direct sunlight, inside vehicles on hot days, etc.). Do not use, leave, or be carrying wireless modem in a place where heat collects, such as under a kotatsu (blanketed warming table) or electric blanket, next to a kairo (worn warming patch), etc.

May cause warping/malfunction; Wireless modem may overheat, ignite or burst. Wireless modem or related hardware may become too hot to touch, leading to burn injuries, etc.

**⚠ WARNING**

Prohibited

Do not put wireless modem or USB Extension Cable in cooking appliances such as a microwave, pressure cooker or on IH cooking heaters.

May cause wireless modem or USB Extension Cable to overheat, emit smoke, ignite or cause malfunction.



Compulsory

Do not use wireless modem near gas station or places with fire/explosion risk (flammable gases (propane gas, gasoline, etc.) or fine particulates).

Wireless modem use near petrochemicals or other flammables may cause fire/explosion.



Prohibited

Do not drop, throw or otherwise subject to strong force or impact.

May overheat, burst or ignite, and may result in fire, cause electric shock, malfunction, etc.



Compulsory

Turn off computer connected to wireless modem in case of odd sound, odor, smoke or abnormalities, during use or storage.

Continued use may cause fire, electric shock, etc.



Prohibited

Keep liquids (water, pet urine, etc.) and conductive material (pencil lead, metal parts, necklaces, hairpins, etc.) away from USB Plug.

May cause short circuit, resulting in fire, malfunction, etc.

**⚠ CAUTION**

Prohibited

Do not place wireless modem on unstable/uneven surfaces.

Wireless modem or related hardware may fall, resulting in injury, malfunction, etc.



Compulsory

Keep wireless modem and related hardware out of infants' reach or pets.

Infants/Pets may swallow wireless modem or related hardware resulting in injuries, etc.



Compulsory

A guardian should supervise use by children and ensure wireless modem is used as instructed.

Failure to do so may result in injuries, etc.

**Wireless Modem****⚠ DANGER**

Prohibited

Do not dispose of wireless modem in fire.

May leak, burst, ignite, etc.



Prohibited

Do not damage (nail, hammer, stomp, etc.) wireless modem or subject it to strong impact.

May leak, overheat, burst, ignite, etc.

**⚠ WARNING**

Compulsory

Do not allow a pet to bite or chew on wireless modem.

Wireless modem may overheat, burst, or ignite, and result in malfunction or fire.



Compulsory

Do not use wireless modem near electronic devices or equipment operating on high precision control or weak signals.

May cause electronic malfunctions, etc.

\*Take added care near these devices: Hearing aids, implanted cardiac pacemakers, implanted cardioverter defibrillators, other electronic medical equipment, fire detectors, automatic doors, and other automatically controlled devices or equipment.



Compulsory

Power off before boarding aircraft to avoid possible radio wave interference with aircraft operations.

If wireless modem use is allowed on board, follow airline or cabin crew instructions regarding wireless modem use.



Compulsory

If thunder is audible while outdoors, stop using immediately and seek shelter.

Lightning strikes or electric shock may occur.



Prohibited

Do not sit on wireless modem in back pants pocket.

Excessive pressures may cause malfunction or injury.

**⚠ CAUTION**

Compulsory

Do not dispose of an old wireless modem with ordinary refuse.

Take wireless modem to a SoftBank Shop.



Prohibited

Do not use wireless modem when it may affect a vehicle's electronic equipment.

Wireless modem use may affect devices and lead to unsafe driving.



Compulsory

If you experience any skin irritation associated with wireless modem use, discontinue wireless modem use and consult a doctor.

Metal and other materials may cause skin irritation, rashes, or itchiness depending on your physical condition. (See "[Material List \(Wireless Modem\)](#)")



Prohibited

Keep wireless modem away from magnetic cards, etc.

Data on bank cards, credit cards, telephone cards, floppy disks, etc. may be lost.



Compulsory

Wireless modem may become hot while in use or while charging for a long period, especially in high temperatures.

Prolonged contact with skin may cause low-temperature burn injuries.

## USIM Card and Memory Card

### CAUTION



Do not apply excessive force when inserting/removing USIM Card.

May cause malfunction. Be careful not to injure your hands, fingers, etc. when removing USIM Card.



Do not use USIM Card other than specified card.

May cause data loss or malfunction



Do not insert objects other than Memory Card in Memory Card Slot.

May cause overheating, electric shock or malfunction.



Do not subject Memory Card to strong shock or vibration or remove Memory Card while Memory Card is being read or written to.

May cause data loss or malfunction.



Do not use Memory Card other than compatible card.

May cause data loss or malfunction. Wireless modem supports up to 32 GB (microSDHC)/64 GB (microSDXC) Memory Card.



Hold Memory Card when removing it.

May cause malfunction.



Do not hold Memory Card Slot to your face or eyes when removing.

May cause malfunction.

## USB Extension Cable (Sample)

### WARNING



Do not cover/wrap with clothing or bedding while in use.

Heat may build up resulting in fire, malfunction, etc.



If plug is dusty, clean with a dry cloth.

May cause fire.



When connecting USB Extension Cable to a device, keep conductive materials (pencil leads, metal parts, necklaces, hair pins, etc.) away from AC Charger plug/USB Extension Cable terminals and plug AC Charger firmly into outlet.

May cause electric shock, short circuit, fire, etc.



Do not plug in/unplug USB Extension Cable with wet hands.

May cause electric shock, malfunction, etc.



Do not touch USB Extension Cable if thunder is audible.

May cause electric shock, etc.

**⚠ CAUTION**

Compulsory

Always grasp USB Extension Cable to disconnect it.

Not doing so may cause electric shock, fire, etc.



Prohibited

Do not subject USB Extension Cable to strong shock such as pulling while it is plugged into a device.

May cause injury or malfunction.



Prohibited

Do not pull, bend with excessive force or twist USB Extension Cable.

Do not damage or modify USB Extension Cable.  
Do not place objects on USB Extension Cable.  
Do not expose USB Extension Cable to excessive heat.

May cause electric shock, overheating or ignite.

### Wireless Modem Use & Electronic Medical Equipment

This section based on "Guidelines on the Use of Radio Communications Equipment such as Cellular Telephones and Safeguards for Electronic Medical Equipment" (Electromagnetic Compatibility Conference) and "Guidelines to safeguard implanted medical devices against radio emissions from the use of radio equipments" (Ministry of Internal Affairs and Communications, January 2013).

**⚠ WARNING**

Compulsory

Persons with an implanted pacemaker or defibrillator should keep wireless modem at least 15 cm away from the device.

Radio waves may interfere with implanted pacemakers or defibrillators.



Compulsory

When using electronic medical equipment (other than implanted cardiac pacemakers/defibrillators) outside medical facilities, check with the equipment manufacturer for information about the effects of radio waves.

Wireless modem radio waves may affect electronic medical equipment.



Compulsory

Wireless modem radio waves may affect electronic medical equipment. Observe these guidelines in medical institutions:

- Do not take wireless modem into operating rooms, or intensive or coronary care units.
- Do not use wireless modem in hospital wards.
- Even in lobbies or other places where wireless modem use is permitted, do not use wireless modem near electronic medical equipment.
- Follow medical facility rules and do not use or bring wireless modem into prohibited areas.



Compulsory

Do not use wireless modem when it is difficult to keep distance from others for at least 15 cm such as in a crowd because there may be someone who is wearing an implanted pacemaker or defibrillator.

Radio waves may interfere with implanted pacemakers or defibrillators causing such devices to malfunction.



## General Notes

### For Safety

- Do not disassemble, modify or solder.  
May cause fire, injury, electric shock or malfunction.
- Do not drop, throw or otherwise subject to strong force or impact.  
May cause malfunction.
- Do not put wireless modem in cooking appliances such as a microwave, pressure cooker or on IH cooking heaters.  
May cause malfunction.
- Do not use or expose wireless modem to extreme heat (e.g. near fire or source of heat, in direct sunlight, inside vehicles on a hot day, etc.).  
Doing so may cause device warping or malfunction. Wireless modem or related hardware may become too hot to touch, leading to burn injuries, etc.
- Wireless modem may become hot while in use for a long period, especially in high temperatures. Prolonged contact with skin may cause low-temperature burn injuries.

### Do Not Disturb Others

- Do not use wireless modem in aircraft.  
May cause radio wave interference with aircraft operations. The use of portable electronic devices such as cellular phones aboard aircraft is prohibited by law and subject to penalty.
- Do not use wireless modem in a prohibited area such as a hospital or research laboratory. Medical equipment etc. might be affected.
- Do not use wireless modem near courtesy seats in train or bus. Medical devices such as pacemaker etc. might be affected.
- Do not use wireless modem if thunder is heard while outdoors (golf course, etc.).

### General Use

- SoftBank 4G Service can be used with only dedicated models.
- Access point compatible with Packet Flat Rate is set on wireless modem and Utility Software by default. The frequency band of the access point is controlled by the SoftBank Mobile network.
- Wireless modem supports Software Update. Use wireless modem with the latest software updated.
- Wireless modem transmissions may be disrupted inside buildings, tunnels or underground, in vehicles, or when moving into/out of such places.
- Use wireless modem without disturbing others. Theaters and public transportation systems may or may not allow use of wireless modem.
- Wireless modems are radios as stipulated by the Radio Law. Under the Radio Law, wireless modems must be submitted for inspection upon request.
- Files may be lost or damaged in the following situations. SoftBank Mobile Corp. is not liable for damages incurred due to lost or altered information. To minimize damages, back up data and save separately.
  - When using wireless modem incorrectly
  - When affected by static electricity or electrical noise
  - When stopping wireless modem while in use
  - When wireless modem breaks down or is submitted for repair
- When using wireless LAN abroad, changing settings according to the law of country is required.
- Communication may slow down or may become unavailable due to heavy traffic or under certain circumstances.
- Do not use wireless modem in the proximity of areas where explosive materials are handled. An explosion may be induced. In addition, explosive devices might be affected.
- Wireless modem USIM Card cannot be used with some mobile devices (including SoftBank models).
- Wireless modem may become hot while in use for a long time.
- If temperature of wireless modem remains high for a long time, communication speed may decrease or communication may stop. Try to connect after a while.
- Prolonged contact with skin may cause low-temperature burn injuries.

### Handling

- Do not expose wireless modem to rain, snow, or high humidity.  
Wireless modem is not waterproof.
- Avoid extreme temperatures/high humidity/direct sunlight/dusty areas.
- Do not drop or subject to strong impact.
- Clean wireless modem with a soft dry cloth. Alcohol, solvent, etc. use may fade color/label.

## Specific Absorption Rate (SAR) Information for this Product

### FCC RF Exposure Information

Your handset is a radio transmitter and receiver. It is designed and manufactured not to exceed the emission limits for exposure to radio frequency (RF) energy set by the Federal Communications Commission of the U.S. Government.

The guidelines are based on standards that were developed by independent scientific organization through periodic and thorough evaluation of scientific studies. The standards include a substantial safety margin designed to assure the safety of all persons, regardless of age and health.

The exposure standard for wireless handsets employs a unit of measurement known as the Specific Absorption Rate, or SAR.

The SAR limit set by the FCC is 1.6 W/kg. The tests are performed in positions and locations (e.g. at the ear and worn on the body) as required by the FCC for each model.

The highest SAR value for this model handset as reported to the FCC when tested for use at the ear is 0.981 W/kg, and when worn on the body in holder or carry case, is 0.981 W/kg.

Body-worn Operation; This device was tested for typical body-worn operations with back of the handset kept 0.5 cm from the body. To maintain compliance with FCC RF exposure requirements, use accessories that maintain a 0.5 cm separation distance between the user's body and the back of the handset. The use of beltclips, holsters and similar accessories should not contain metallic components in its assembly.

The use of accessories that do not satisfy these requirements may not comply with FCC RF exposure requirements, and should be avoided. The FCC has granted an Equipment Authorization for this model handset with all reported SAR levels evaluated as in compliance with the FCC RF emission guidelines.

SAR information on this model handset is on file with the FCC and can be found under the Display Grant section of <http://www.fcc.gov/oet/ea/> after searching on FCC ID QIS203HW.

Additional information on Specific Absorption Rates (SAR) can be found on the FCC website at <http://transition.fcc.gov/oet/rfsafety/>

### European RF Exposure Information

Your mobile device is a radio transmitter and receiver. It is designed not to exceed the limits for exposure to radio waves recommended by international guidelines. These guidelines were developed by the independent scientific organization ICNIRP and include safety margins designed to assure the protection of all persons, regardless of age and health.

The guidelines use a unit of measurement known as the Specific Absorption Rate, or SAR. The SAR limit for mobile devices is 2.0 W/kg and the highest SAR value for this device when tested on the body is 0.372 W/kg\*. As SAR is measured utilizing the devices highest transmitting power the actual SAR of this device while operating is typically below that indicated above. This is due to automatic changes to the power level of the device to ensure it only uses the minimum level required to reach the network.

The World Health Organization has stated that present scientific information does not indicate the need for any special precautions for the use of mobile devices. They note that if you want to reduce your exposure then you can do so by limiting the length of calls or using a hands-free device to keep the mobile phone away from the head and body.

\*Please see [Electromagnetic Safety](#) for important notes regarding body worn operation.

World Health Organization

<http://www.who.int/emf>

List of Specific Absorption Rates (SAR) for radio waves

<http://mb.softbank.jp/mb/support/sar/> (Japanese)

### Electromagnetic Safety

For body worn operation, this mobile phone has been tested and meets RF exposure guidelines when used with an accessory containing no metal and positioning the wireless modem a minimum 10 mm from the body. Use of other accessories may not ensure compliance with RF exposure guidelines.

## 203HW User Guide Index

<b>C</b>	
	Connecting/Disconnecting to/from Internet..... 38
	Customer Service..... 55
<b>D</b>	
	Device Recognition/Removal on Mac..... 30
	Device Recognition/Removal on Windows PC..... 12
	Dial-Up Connection (Windows PC)..... 25
<b>G</b>	
	General Notes..... 63
<b>I</b>	
	Introduction..... 2
<b>M</b>	
	Memory Card..... 8
<b>P</b>	
	Parts & Functions..... 6
<b>S</b>	
	Safety Precautions..... 58
	Setting via SoftBank 203HW Utility..... 40
	SoftBank 203HW Utility Overview..... 38
	Software Installation (Mac)..... 31
	Software Installation (Windows PC)..... 13
	Specific Absorption Rate (SAR) Information for this Product..... 64
	Specifications..... 54
<b>T</b>	
	Troubleshooting..... 52
<b>U</b>	
	Updating Software..... 49
	USIM Card..... 7
<b>W</b>	
	Warranty & Service..... 55





# SoftBank 203HW User Guide

July 2013, First Edition  
SoftBank Mobile Corp.

Visit [SoftBank Shop](#) for assistance

Model : SoftBank 203HW  
Manufacturer : HUAWEI TECHNOLOGIES CO., LTD.