

# Xperia™ X Performance

## User Guide



## Xperia™ X Performance User Guide Contents

### Introduction

About the User Guide.....	3
Accessing Instructions on Handset.....	3

### Getting Started

Parts & Functions.....	6
SIM Card.....	7
SD Card.....	9
Charging Battery.....	11
Power On/Off.....	12
Using Touchscreen.....	12

### Basic Operations

Basic Operation.....	16
Phone Number.....	17
Silent Mode.....	18
Text Entry.....	18
Using a Google Account.....	19
Google Play.....	21
Security Codes/Operation Password.....	23
SIM PIN.....	23
Locking Screen.....	24
Updating Software.....	25

### Handset Interface

Home Screen Basics.....	28
Status Bar.....	29
Using Notifications Window/Quick Settings.....	30

### Phone

Placing/Answering Calls.....	34
Optional Services.....	36
Using Contacts.....	41

### Messaging & Internet

Messaging.....	44
Sending S! Mail/SMS.....	44
Using Gmail.....	46
Using Email.....	47
Using Chrome.....	47

### Camera

Capturing Still Images/Videos.....	52
Viewing Captured Still Images/Videos (Album).....	55

### Music

Listening to Music.....	58
-------------------------	----

### Connectivity

Connecting by Wi-Fi.....	60
Using Bluetooth®Function.....	61

### Global Services

Making Calls while Abroad.....	64
--------------------------------	----

## Handset Settings

Handset Settings.....	68
Wi-Fi Settings.....	69
Other Settings.....	70
Sound & Notification Settings.....	70
App Settings.....	71
Account & Sync Settings.....	72

## For Assistance

Specifications.....	74
Customer Service.....	74

## Safety Precautions

Safety Precautions.....	76
Important Product Information.....	84
Bluetooth®/Wi-Fi (WLAN).....	86
Waterproofing/Dustproofing.....	87
End User License Agreement.....	89
Export Controls and Regulations.....	90
Intellectual Property Rights.....	90
RF Exposure Information/Specific Absorption Rate (SAR) Information.....	92
FCC Statement for the USA.....	94
Declaration of Conformity for 502SO.....	94
VCCI.....	95

## About the User Guide

Thank-you for purchasing this product.

### Before Using This Product

- Read "Safety Precautions" and this guide thoroughly beforehand for proper usage.
- Accessible services may be limited by contract conditions.

### Descriptions in the User Guide

In the User Guide, most operation descriptions are based on handset at time of purchase.

Unless noted otherwise, descriptions are for Home Screen.

Some operation descriptions may be simplified.

### Screenshots & Key Labels

Screenshots in the User Guide may differ in appearance with actual Display. Key labels in the User Guide are simplified for description purposes and differ with actual Display.

### Other Notations

In the User Guide, the product is referred to as "handset."  
microSD™/microSDHC™/microSDXC™ Card is referred to as "SD Card."

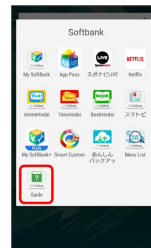
## Accessing Instructions on Handset


For those unfamiliar with handset operation, handset includes an application for learning touch operation and checking how to make settings.


### Launching Guide

1

In Home Screen,    (SoftBank)   (Guide)



 Guide top screen opens.

- Information on usage of  (Guide) appears at initial startup. Follow onscreen instructions.

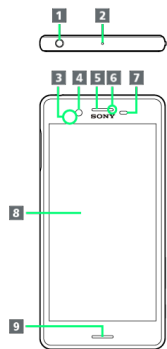



# Getting Started

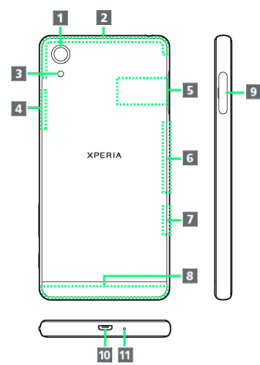
- Parts & Functions..... 6
- SIM Card..... 7
- SD Card.....9
- Charging Battery..... 11
- Power On/Off..... 12
- Using Touchscreen..... 12

# Parts & Functions

## Handset

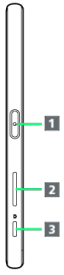


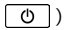

Part	Description
<b>1</b> Headphone Port	Connect commercially available headphones. This port supports tetrapolar headset that conforms to the CTIA standard.
<b>2</b> Second Mic	Reduces noise for calling.
<b>3</b> NFC/ Osaifu-Keitai Detection Area	 sticker is attached at time of purchase.
<b>4</b> Front Camera	Use to shoot still images or videos of yourself.
<b>5</b> Earpiece/ Speaker	Hear the other party's voice here. Also, hear sound (music, videos, TV, etc.) from here.
<b>6</b> Notification Lamp	Flashes for incoming transmissions. Lights while charging.
<b>7</b> Proximity/ Light Sensor	Detects surrounding brightness to automatically adjust Display or backlight and prevent Touchscreen misoperation during a call.
<b>8</b> Display	Touchscreen-type display, operate with your fingers on Display.
<b>9</b> Speaker	Speak here.



Part	Description
<b>1</b> Camera	Capture still images and videos.
<b>2</b> Internal Antenna/GPS Antenna Area	Internal Antenna for calls, data communication and GPS.
<b>3</b> Flash/ Photo Light	Use as camera flash when taking photos, etc.
<b>4</b> Wi-Fi/ Bluetooth® Antenna Area	Internal Antenna for Wi-Fi and Bluetooth® feature.
<b>5</b> Nameplate	CE mark, FCC ID, IMEI information printed sticker is attached. Do not remove nameplate.
<b>6</b> Internal Antenna Area	Internal Antenna for call and data communication.
<b>7</b> Wi-Fi Antenna Area	Internal Antenna for Wi-Fi.
<b>8</b> Internal Antenna Area	Internal Antenna for call and data communication.
<b>9</b> SIM Card/ SD Card Slot	Insert SIM Card/SD Card. If SIM Card/SD Card Slot Cover is pulled out, handset reboots.
<b>10</b> External Device Port	Connect commercially available Micro USB Cable, etc.
<b>11</b> Mic	Speak here.

## Handset Keys



Part	Description
<b>1</b> Power Key/Screen Lock Key/Fingerprint Sensor 	Long Press for power on/off. Press for sleep mode on/off. Or, use Fingerprint authentication.
<b>2</b> Volume/Zoom Up/Down Key	Adjust Volume. Adjust Zoom while using Camera.
<b>3</b> Camera Key (  )	Use as Camera shutter. Long Press to launch Camera.

## SIM Card

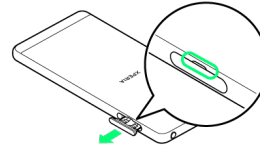
SIM Card is an IC card containing phone number and other customer information.

### Inserting SIM Card

Always unmount SD Card beforehand. For details, see "[Unmounting SD Card.](#)"

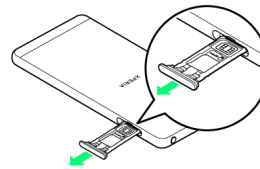
**1**

Draw SIM Card/SD Card Slot Cover out using groove



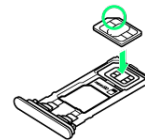
**2**

Draw Tray out straight from handset



**3**

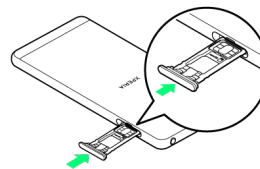
Set SIM Card into Tray with IC chip facing up



- Check SIM Card orientation by notch.
- Firmly set SIM Card so as not to come off from Tray.

**4**

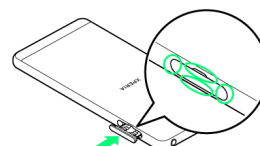
Insert Tray with SIM Card straight into handset



- Check Tray orientation.

**5**

Push Tray all the way and press it down where indicated ○, and make sure there are no gaps

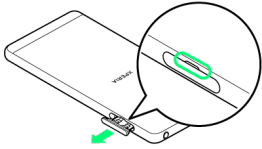


## Removing SIM Card

Always unmount SD Card beforehand. For details, see ["Unmounting SD Card."](#)

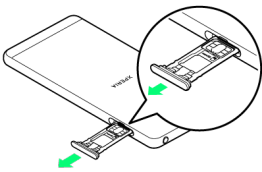
1

Draw SIM Card/SD Card Slot Cover out using groove



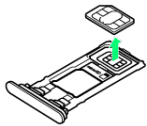
2

Draw Tray out straight from handset



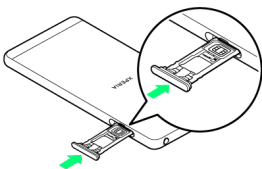
3

Remove SIM Card from Tray



4

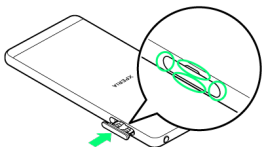
Insert Tray straight into handset



· Check Tray orientation.

5

Push Tray all the way and press it down where indicated ○, and make sure there are no gaps



## SIM-Unlocking Handset

Handset can be SIM-unlocked. SIM-unlocking handset allows other-carrier SIM cards to be used with it.

- Some services, functions, etc. may have restrictions when an other-carrier SIM card is used. SoftBank Corp. does not guarantee operation whatsoever.
- For details, see SoftBank Website.

## SD Card

Save data to handset memory or SD Card.  
Handset supports SD Cards up to 200 GB. Some SD Cards may not operate properly.

### ! SD Card Cautions

#### Data

Information stored on SD Card can become lost or changed accidentally or as a result of damage. It is recommended that you keep a separate copy of important data. SoftBank Corp. is not responsible for damages from data that is lost or changed.

#### Reading/Writing Data

Never power off while reading or writing data.

#### Battery Level

A low battery charge may prevent reading/writing to SD Card.

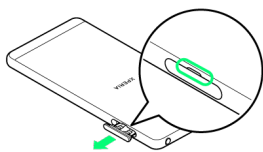
### 🚫 Handling SD Card

Use/keep SD Cards away from the reach of infants. May cause choking if swallowed.

## Inserting SD Card

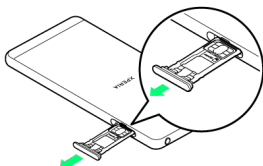
1

Draw SIM Card/SD Card Slot Cover out using groove



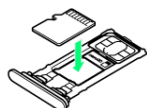
2

Draw Tray out straight from handset



3

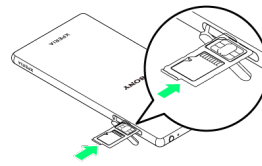
Set SD Card into Tray with the metal terminals facing up



· Firmly set SIM Card so as not to come off from Tray.

4

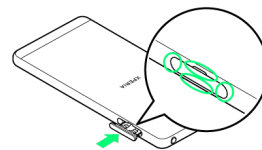
Insert Tray straight into handset



· Check Tray orientation.

5

Push Tray all the way and press it down where indicated ○, and make sure there are no gaps

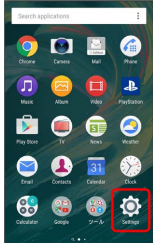


## Unmounting SD Card

Always unmount SD Card before removing.

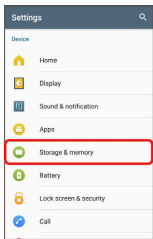
1

In Home Screen,    (Settings)



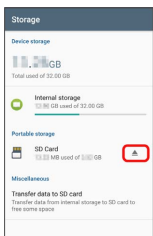
2


Storage & memory



3

    for "SD Card"



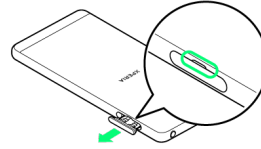
 "SD Card is safely ejected" appears and SD Card is unmounted.

## Removing SD Card

Always unmount SD Card beforehand.

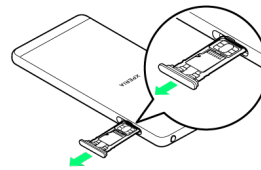
1

Draw SIM Card/SD Card Slot Cover out using groove



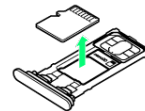
2

Draw Tray out straight from handset



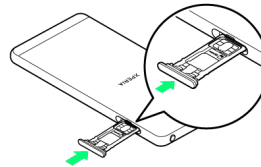
3

Remove SD Card from Tray



4

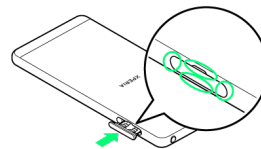
Insert Tray straight into handset



· Check Tray orientation.

5

Push Tray all the way in and press it down where indicated ○, and make sure there are no gaps



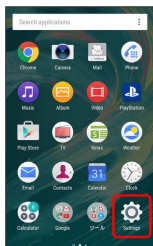
## Formatting SD Card

When using a new SD Card for the first time, always format it on handset.

- Formatting erases all data on SD Card. Carefully check any SD Card that was used on another device before formatting.
- Charge Battery while formatting, or format with adequate battery charge.

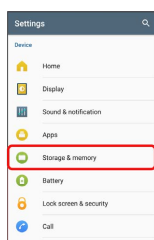
1

In Home Screen,    (Settings)



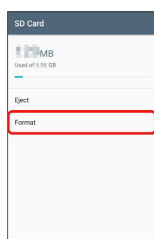
2

Storage & memory



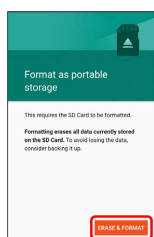
3

  Advanced  Storage  SD Card     
Settings  Format



4

ERASE & FORMAT



 All data on SD Card is erased.

## Charging Battery

### Charging with AC Charger

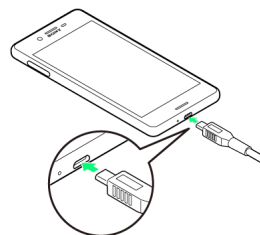
For details, see SoftBank Website.

Operation using SoftBank SELECTION AC Adapter (Micro USB) 1.0A for smartphones (SB-AC13-HDMU) is explained here.

- See instructions included with AC Charger.
- Never connect Micro USB plug while handset or AC Charger is wet.

1

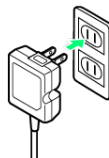
Insert Micro USB connector of AC Charger straight into External Device Port




- Check connector orientation. Forcible connection may cause damage.

2

Unfold power plug of AC Charger and plug into household AC



 Charging start sound sounds and Notification Lamp on handset lights up when charging starts.

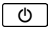
3

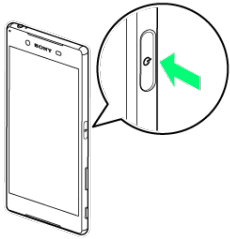
When charging is complete, unplug AC Charger and remove Micro USB connector of AC Charger straight from handset


## Power On/Off

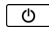
### Powering On

1

 (Long Press)

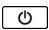


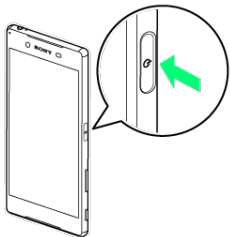
 Lock screen appears.

- See "[Unlocking Screen](#)" to unlock the screen.
- Startup wizard appears for the first time handset is powered on. Follow onscreen instructions.
- Battery level is not sufficient if Notification Lamp flashes several times in red or low battery indicator appears when  is Pressed with handset powered off. Charge the battery.

### Powering Off

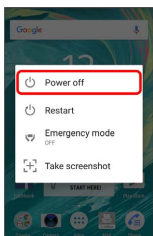
1


 (Long Press)



2

Power off



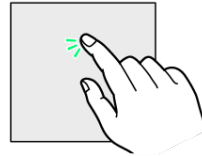
 Handset powers off.

## Using Touchscreen

Handset uses a touchscreen-type Display. Operate with your fingers on Display.

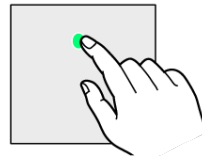
### Tap

Contact Display lightly and briefly.



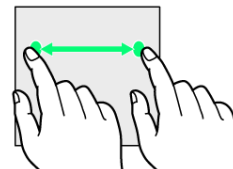
### Touch & Hold

Touch screen lightly and hold it for a while. When the screen changes, release finger.



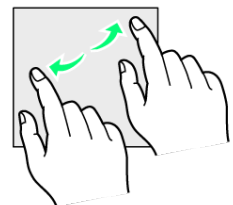
### Drag

Touch icon or other item lightly, move it where desired, and release finger.



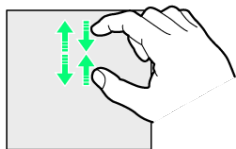
### Swipe/Flick

Contact Display lightly, then brush screen up/down or left/right.



## Pinch/Spread

Contact Display lightly, then close/widen fingers.





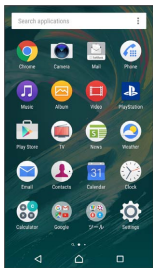
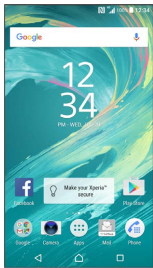
## Basic Operations

Basic Operation.....	16
Phone Number.....	17
Silent Mode.....	18
Text Entry.....	18
Using a Google Account.....	19
Google Play.....	21
Security Codes/Operation Password.....	23
SIM PIN.....	23
Locking Screen.....	24
Updating Software.....	25

# Basic Operation

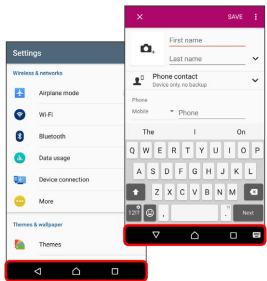
## Home Screen & Applications List

Most handset operations start in Home Screen (appears at power on) or in applications list.



## Navigation Bar

Tap icons on Navigation Bar (Display bottom) for the following functions/operations.

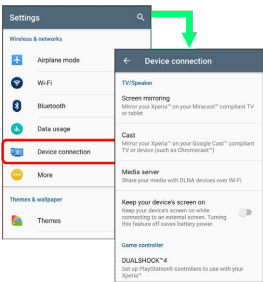


Item	Description
(Back)	Return to previous screen. Appears as  for onscreen keyboard; Tap to close keyboard.
(Home)	Return to Home Screen.
(History)	Open listing of recently used applications and activate or delete applications.
(Keyboard)	Change keyboard.

## Selecting Options and Navigating Screens

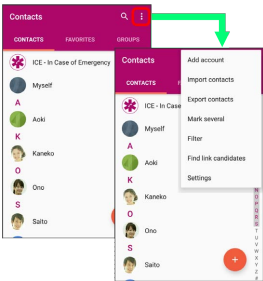
Tap items, icons, onscreen keys, etc. to open assigned items.

- Tap to go back to previous screen.

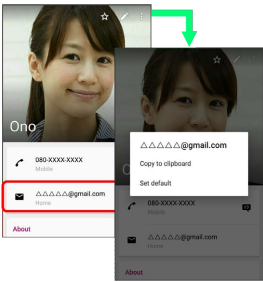


## Menu Operations

Tap for available settings and items.

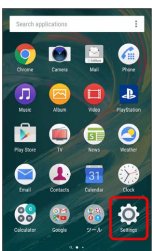


Screens may also have settings and items that are available by Touching & Holding Display.



## Handset Settings and Making Settings

In Home Screen, Tap then Tap (Settings) to customize the operation of handset functions.



## Portrait Orientation & Landscape Orientation

The screen changes to landscape orientation when handset is rotated sideways.

- Depending on the current screen, the orientation may not change even by changing handset orientation.

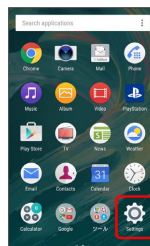


## Phone Number

### Checking Your Phone Number

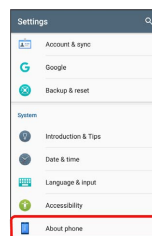
1

In Home Screen, (Settings)



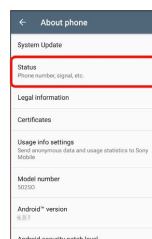
2

About phone



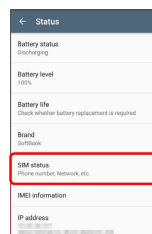
3

Status



4

SIM status




Check phone number.

## Silent Mode

Set ringtone, operation sounds, etc. not to sound to avoid disturbing others around you.

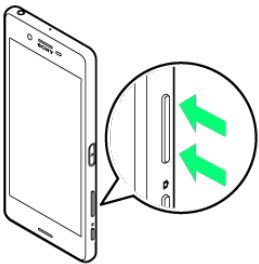
### ! Silent Mode Cautions

Camera shutter, video start/stop tones, alarm, video and music playback, and  Tapped tone during a call sound even in Silent mode.


### Using Silent Mode (Vibrate)



1

Press Volume Up or Down Key



2

On volume adjustment bar, 

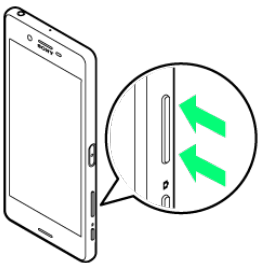
 Icon on sound volume adjustment bar turns to  (White) and Silent mode (Vibrate) is set.

- Press Volume Up Key while in Silent mode (Vibrate) to cancel.

### Using Silent Mode (Mute)



1

Press Volume Up or Down Key



2

On volume adjustment bar,   Press Volume Down Key



 Icon on sound volume adjustment bar turns to  (Gray) and Silent mode (Mute) is set.

- Press Volume Up Key while in Silent mode (Mute) to cancel.

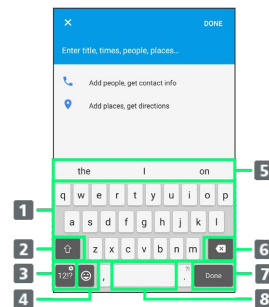
## Text Entry









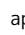
### Keyboards

Enter text with onscreen QWERTY keyboard by Tapping each character individually, or use Gesture input feature and slide finger from character to character to form words.

- Tap  to hide keyboard.
- Touch & Hold text in text entry window to magnify in small balloon.
- Input method is set to International keyboard (Xperia™ keyboard) by default. To input Japanese, Tap  to change keyboard to Xperia™ Japanese keyboard.


### QWERTY Keyboard Layout

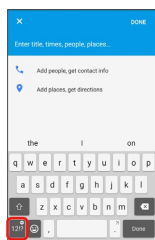



- 1 Enter a character. Touch & Hold character to show variant options.
- 2 Switch between lower-case , upper-case , and caps .
- 3 Toggle entry modes.
- 4 Show Emoticon/Pictogram list. When opened for the first time,  is shown for personalizing keyboard. Tap and follow onscreen instructions. After personalized,  appears.
- 5 Show entry candidates.
- 6 Delete a character before cursor.
- 7 , , , or  appears depending on application. Confirm text input or enter line break.
- 8 Enter a space. Double-tap to enter a period.



## Switching Character Types (Entry Modes)

1

In QWERTY keyboard, Tap .



 Entry mode is changed to number and symbol mode.

- To enter more symbols, Tap .
- Tap  to back to alphabet mode.

## Using a Google Account

Use a Google account and get more convenience with Google services. A Google account is required to use some services or fully use some applications.

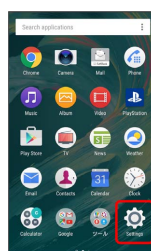
### Google Account Cautions

Be careful not to forget your Google account ID or password.

### Creating a Google Account

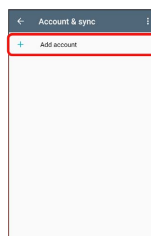
1

In Home Screen,    (Settings)



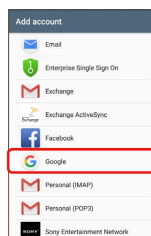
2


Account & sync  Add account



3

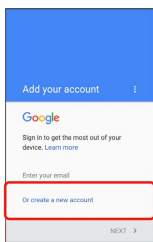
Google



 Window for adding a Google account opens.

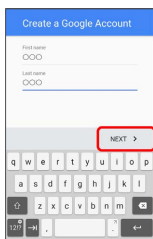
4

Or create a new account



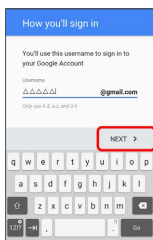
5

Enter First name → Last name → NEXT



6

Enter user name (mail address) → NEXT

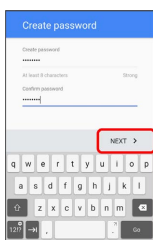


- If confirmation appears, follow onscreen instructions.

7

Enter password → Enter password again (for confirmation)

→ NEXT



8

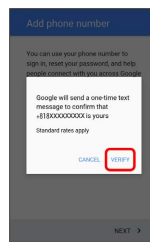
Check phone number → NEXT



- Phone number of your SIM Card is entered automatically.

9

VERIFY

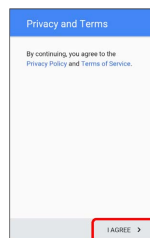


📶 SMS is sent to the entered phone number.

- If a phone number other than the one on your SIM Card is entered, confirmation screen appears. Enter notified verification code → Tap NEXT.

10

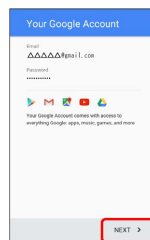
I AGREE



📶 A Google account is created.

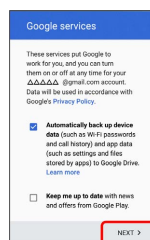
11

NEXT



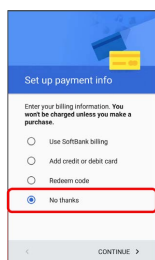
12

Set Google service → NEXT



13

No thanks → CONTINUE



Google account creation is completed.

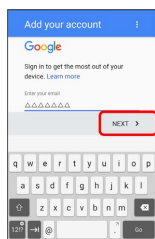
## Logging In with a Google Account

If an application is activated that requires a Google account, a window for adding a Google account opens. Log in with a Google account you have so you can use the application.

1

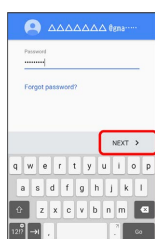
In window for adding Google account, enter mail address →

NEXT



2

Enter password → NEXT



3

Follow onscreen instructions

You are logged in to your Google account.

## Google Play

Download a variety of applications (free/paid) from Google Play. Change the setting of downloaded applications to enable manual or automatic updates. Log in to your Google account beforehand.

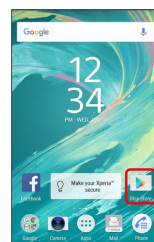
### Installing Applications

Many different kinds of applications can be installed on handset from Google Play (provided by Google Inc.). SoftBank Corp. is not responsible in any way for user-installed applications (quality, reliability, legality, fitness for a purpose, credibility, accuracy, etc.) or resulting malfunctions (viruses, etc.).

### Installing Free Applications

1

In Home Screen, (Play Store)



Google Play appears.

- If confirmation appears, follow onscreen instructions.

2

Tap free application → INSTALL

Application is downloaded and installed.

- If confirmation appears, follow onscreen instructions

## Purchasing Paid Applications

1

In Home Screen,  (Play Store)




 Google Play appears.

· If confirmation appears, follow onscreen instructions.

2

Tap paid application → Tap amount → Follow onscreen instructions

 Application is downloaded and installed.

### Purchased Applications

#### Payment




Pay only once. Redownloads of uninstalled applications are free of charge.

#### On Other Android Devices

Install an application on any Android device under the same Google account for free.

### Requesting Refunds

Refund is possible within a limited time. By requesting a refund, the application is deleted and the charge is cancelled. A refund request is valid only once per one application.

In Google Play,  →  → Tap application → 

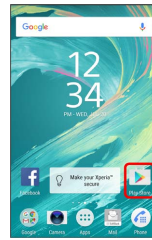
### Purchasing Applications

Purchase applications at your own risk. SoftBank Corp. is not responsible for any disadvantage resulting for user or third parties.

## Updating Applications

1

In Home Screen,  (Play Store)




 Google Play appears.

· If confirmation appears, follow onscreen instructions.

2


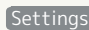

 →  → Tap application to update → 

 The application is downloaded and installed.


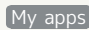

· If confirmation appears, follow onscreen instructions.

### Setting Application Updates

#### Setting Automatic Updates Application

In Google Play,  →  →   
→ Set update method

#### Setting Automatic Updates Application

In Google Play,  →  → Tap application → 

· Automatic updates are unavailable for some applications.  
· If confirmation appears, follow onscreen instructions

## Security Codes/Operation Password

### Code Types

The following codes are required for handset use.

Code	Description
Operation Password	Code necessary to use handset functions. For details, see " <a href="#">Operation Password &amp; Center Access Code</a> ."
Center Access Code	Four-digit code you have set in subscription contract. For details, see " <a href="#">Operation Password &amp; Center Access Code</a> ."
SIM PIN	Code for SIM card. For details, see " <a href="#">SIM PIN</a> ."
PIN	Code for unlocking screen.
WPS PIN	Code for connecting to WPS devices.

### 💡 PIN Types

In addition to the PIN for SIM Card, there is a different PIN for unlocking the screen and a WPS PIN for connecting to WPS devices. Do not forget these codes.

### Operation Password & Center Access Code


Center Access Code is the four-digit code set at time of subscription, and is required such as when using option services from a landline phone.

- Do not forget Center Access Code. If you forget the code, contact us for recovery. For details, contact [Customer Service](#).
- Be careful not to reveal security codes to others. If misused by others, SoftBank Corp. is not liable for any resulting damages.

### 💡 Resetting Operation Password

In window for entering Operation Password, Tap **Reset operation password** then **OK**.

Follow onscreen instructions.

- My SoftBank authentication is required to reset Operation Password. Set My SoftBank authentication from  (My SoftBank+).

## SIM PIN

SIM PIN is a code for SIM Card. It is used to prevent unauthorized use by others.

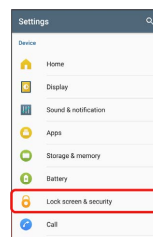
PIN is 9999 by default.

### Enabling SIM PIN

When PIN is enabled, a window for entering PIN appears to allow handset use each time handset is powered on with SIM Card installed.

1

In Home Screen,   (Settings)  Lock screen & security



2

Set up SIM card lock  Lock SIM card  Enter PIN   
OK

 PIN is enabled.


### ⚠️ PIN Cautions

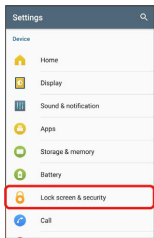
Entering incorrect PIN three consecutive times activates PIN Lock. To cancel, Personal Unblocking Key (PUK) is required; contact [Customer Service](#). Entering incorrect PUK ten consecutive times locks SIM Card, disabling handset. For recovery, SIM Card must be reissued at a SoftBank Shop (fees apply).

## Changing SIM PIN








First enable SIM PIN to change PIN.


1

In Home Screen,   (Settings)  Lock screen & security



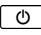
2

Set up SIM card lock  Change SIM PIN  Enter current PIN  OK  Enter new PIN  OK  Re-enter new PIN  OK

 PIN is changed.

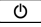
## Locking Screen

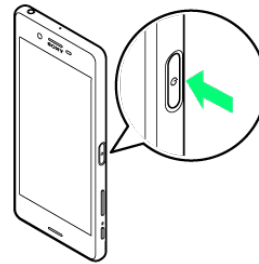
Display is locked after a set period of inactivity.


Alternatively, Press  for manual screen lock. This saves battery power and prevents accidental Touchscreen operation.

## Unlocking Screen

1

In sleep mode (Screen lock active), 




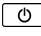
 Lock screen appears.

2

Flick screen upwards



 Screen is unlocked.

- The method for unlocking the screen can be changed.
- For fingerprint authentication, Touch  with authentication finger to unlock screen.

## Updating Software

Check whether updates are required via the Internet, and update as required.

### Before Updating Software

Saved data may be lost depending on condition of handset (malfunctioning, damaged, water seepage, etc.). It is recommended that you back up important data before updating software. SoftBank Corp. is not responsible for damages from loss of data.

Software Update makes a part of settings to the default.

### Software Update Cautions

#### During Update

Handset cannot be used until software update is complete. It may take time to update software.

#### Signal during Update

Operate handset where signal reception is good and without changing location. Also operate with adequate battery charge. Signal becoming weak or Battery becoming low during an update may cause an update failure. An update failure may disable handset.

#### If Using Other Functions

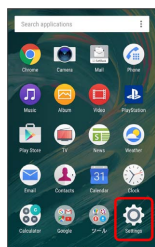
Other functions cannot be operated during a software update.

## Updating Software

Automatic update is set by default. To update software manually, operate as follows.

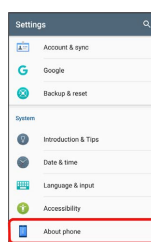
1

In Home Screen,   (Settings)




2

About phone



3

System Update → Software Update → Software Update → Follow onscreen instructions

 Software update starts.

### Connecting to PC to Update Software

To update software connecting to a PC, install software for "Software Update" on the PC beforehand.

For installation of the software, see the following web page.

<http://www.sonymobile.co.jp/support/>

### Operations for Software Update Configuration

#### Setting whether to update Software Automatically

On Software Update window, **Automatic Update**  
Settings → NOT AUTOMATICALLY UPDATE /  
AUTOMATICALLY UPDATE → OK

#### Setting Scheduled Update

On Software Update window, **Update Schedule Settings**  
→ Set a time → OK → OK



# Handset Interface

- Home Screen Basics.....28
- Status Bar..... 29
- Using Notifications Window/Quick Settings.....30

# Home Screen Basics

Home Screen appears at power on; most handset operations start here. Customize Home Screen with application shortcuts, widgets, and folders.

## Layout



Item	Description
1 Status Bar	Drag down for Notifications Window. Drag down with two fingers to open Quick Settings.
2 Home Screen Position	Current position among several Home Screen sheets.
3 Dock	Tap an icon to activate application or function. Customize with up to four application shortcuts. Also, create folders.
4 Navigation Bar	Tap Key icon to operate. For Navigation Bar, see "Navigation Bar."
5 Customize Area	Place application shortcuts, folders, widgets freely.
6 Apps Key	Open applications list.

## Toggling Home Screen Sheets

Home Screen consists of 20 sheets. Customize each Home Screen sheet with application shortcuts, widgets, etc. to make handset more convenient. Flick Home Screen left/right to toggle sheets.

- In any Home Screen sheet, Tap to return to Home Screen top sheet.

## + Operations on Simple Home

### Switching to Simple Home

Simple Home provides Home Screen with basic functions and main setting items.

In Home Screen, → (Settings) → Home →  
○ for Simple Home → OK → OK

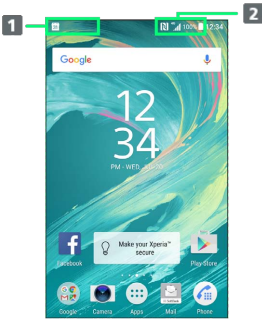
### Switching to Standard Home Screen

In Simple Home screen, Settings → Exit Simple Home  
→ OK

# Status Bar

Status Bar appears at the top of Display. Notification Indicators for new mail, etc. and Status Indicators for handset appear here.

## Status Bar Layout



- 1 Notification Indicators
- 2 Status Indicators

## Main Notification Indicators














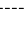

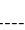


Notification Indicators appearing in Status Bar include the following.

Indicator	Description
	Launch Guide (Drag Status Bar down and open from Notifications Window)
	Missed Call
	Call Arriving
	Calling <sup>1</sup> /Dialing <sup>1</sup>
	Answer on Hold <sup>1</sup> /Call on Hold <sup>1</sup>
	New Recorded Message
	New Voicemail
	New Gmail/Email
	New Email
	New Text Message (SMS)/i Mail
	New Hangouts Message
	Urgent News
	Wi-Fi Open Network Available
	USB Connected
	Sharing File via Bluetooth®
	Data Uploading
	Data Downloading
	Application Update Available
	Application Installation Complete
	Screenshot Saved
	Viewing TV <sup>1</sup> /Scheduled Viewing Started
	Recording TV <sup>1</sup> /Scheduled Recording Started
	Playing Back Music
	Calendar Event Reminder
	Snoozing/Unchecked Alarm
	Stopwatch/Timer in Use
	NFC/Osaifu-Keitai Locked
	Low Battery Alert (30% or less)
	SD Card Detected/Mounting
	Software Update Notice, Downloading Complete, Stopped

<sup>1</sup> Appears when switching to other window such as Home Screen.

Main Status Indicators

Status Indicators appearing in Status Bar include the following.

Indicator	Description
	Battery Full (100%)
	Battery Charging
	Battery Low (5% or less)
	Signal Strength
	4G LTE/4G Data in Use <sup>1</sup>
	3G Data in Use
	No Signal
	Airplane Mode
	Wi-Fi Connected
	Wi-Fi Connected without Internet
	Accessibility, or Unstable Wi-Fi Signal
	Bluetooth® On
	Bluetooth® Connected
	Silent Mode (Vibrate)
	Silent Mode (Mute)/"Alarms only" or "Priority only" Set for Do not disturb Function <sup>2</sup>
	"Total silence" Set for Do not disturb Function <sup>2</sup>
	Alarm Set
	Obtaining Current Location

- 1 Handset supports FDD-LTE (SoftBank 4G LTE) and AXGP (SoftBank 4G); indicator appears when handset is connected to either. Handset connects to SoftBank 4G first.
- 2 Set from Quick Settings. Tap **EDIT** and enable "Do not disturb" beforehand. For details, see ["Using Notifications Window/Quick Settings."](#)

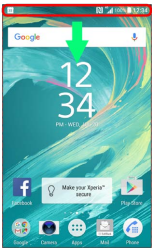
Using Notifications Window/Quick Settings


Drag Status Bar down to open Notifications Window. Check Notification Indicators and the details.  
Drag Notifications Window down to open Quick Settings. Tap icons on Quick Settings to set each function On/Off.

Opening Notifications Window/Quick Settings

1

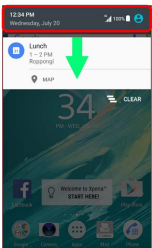
Drag Status Bar down



 Notifications Window opens.

2


Drag Notifications Window down



 Quick Settings opens.

· Alternatively, Drag Status Bar down with two fingers to open Quick Settings.

Closing Notifications Window/Quick Settings

Drag Notifications Window/Quick Settings up  
· Alternatively, Tap  to close Notifications Window/Quick Settings.

Lock Screen Operations

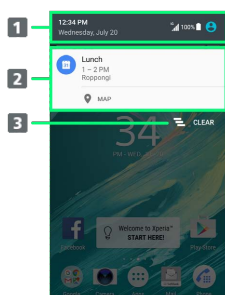
Opening Quick Settings

In Lock screen, Drag Status bar down

Checking Notifications

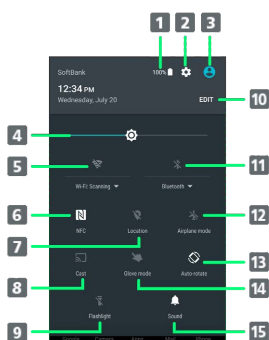
Flick down Lock screen

## Notifications Window Layout



- 1** Open Quick Settings
- 2** Notifications (incoming, functions being executed, etc.)
- 3** Clear all notifications. Some notifications are not clearable.

## Quick Settings Layout



- 1** Open Battery menu in Settings
- 2** Open Settings
- 3** Open your contact information
- 4** Adjust screen brightness
- 5** Wi-Fi On/Off
- 6** Enable/Disable NFC Reader/Writer and P2P function
- 7** Location information On/Off
- 8** Mirror handset screen on Google Cast devices
- 9** Light On/Off
- 10** Add/Delete, change Quick Settings order
- 11** Bluetooth® On/Off
- 12** Set/Cancel Airplane mode
- 13** Auto-rotate screen On/Off
- 14** Glove mode On/Off
- 15** Switch to Silent mode (Vibrate)/Silent mode (Mute) or Cancel Silent mode



# Phone

Placing/Answering Calls.....	34
Optional Services.....	36
Using Contacts.....	41

## Placing/Answering Calls

Learn calling basics, including handling incoming calls, and in-call operations.

### Phone Function

#### Emergency Location Report

Making emergency calls (110, 119 or 118) from SoftBank handset (3G) automatically reports handset location to corresponding agency (police, etc.). This system is referred to as Emergency Location Report, and notifies location based on positioning from base stations.

- Location Report does not incur registration/transmission fees.
- Location/signal conditions affect positioning accuracy. Always provide location and call purpose.
- Hiding Caller ID (using 184, etc.) cancels Location Report. However, corresponding agency may obtain location information in life threatening situations.
- Location Report is not sent for calls made while outside Japan.

#### VoLTE and HD Voice

Handset supports VoLTE and HD Voice for higher voice call quality.

### Adjusting Volume of Call

Press Volume Up/Down Key.

### Hints

Q. Difficulty during call

- A. It may not be possible to make a call properly in a noisy location.
- A. When calling using Speaker, check the call volume. Raising the call volume may make calling difficult.

Q. Sound pops momentarily during a call

- A. Are you changing location while calling? Sound pops when signal is weak and handset switches to a different area.

### Emergency Call Cautions

#### Available Area


Emergency calls for handset is available only in SoftBank service area.

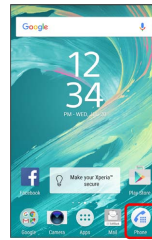
#### Airplane Mode


Note that Airplane mode disables Emergency calls.

## Placing Calls

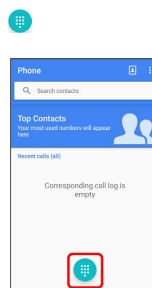
1


In Home Screen,  (Phone)



 Recent calls appears.

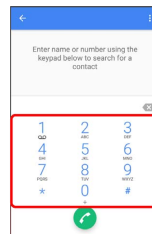
2



 Call window opens.

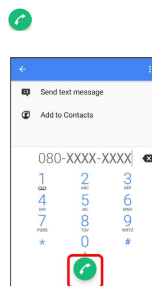
3


Tap dialpad to enter the other party's number




- Enter area code first for calling landline numbers.

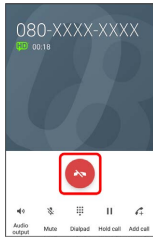
4




 Handset dials number. Call begins when other party answers.





5

To end the call, 



 Call ends.

### Calling the Emergency Number When the Phone's Screen is Locked

Flick Lock screen  Emergency  Enter number for emergency service  


- Available only when Screen lock is set to "Pattern," "PIN," or "Password."

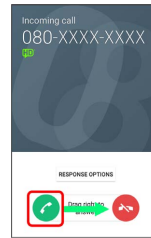
### Hints


- Q. Call does not connect
- A. Was the number dialed using the area code? Dial the number starting with "0."
- A. Are conditions for calling poor? Call again after moving where signal is good.

## Answering Calls


1

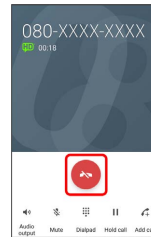
When a call arrives, Drag  to right




 Call begins.


2

To end the call, 



 Call ends.

### Missed Calls


When call is not answered,  appears on Status Bar.

- Drag Status Bar down and Tap notification to show Call History.


### Arriving Call Operations

#### Cancelling Ringtone

Press Volume Up/Down Key when call is arriving

- Alternatively, Press .

#### Rejecting Arriving Calls

Drag  to left when call is arriving

# Optional Services

Use the following optional services.

## Optional Services

Use the following optional services.

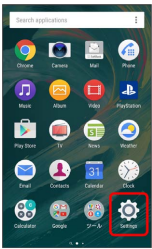
Service	Description
Call Forwarding	Divert calls to a preset number when out of service area or unable to answer.
Voicemail	Divert calls to a Voicemail Center to take messages when out of service area or unable to answer.
Call Waiting <sup>1</sup>	Answer calls during a call.
Group Calling <sup>1</sup>	Merge multiple calls.
Notify Caller ID	Send or hide your number when placing calls.
Call Barring	Restrict incoming/outgoing calls by conditions.

1 Requires separate subscription.

## Using Call Forwarding

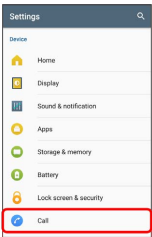
1

In Home Screen,    (Settings)



2

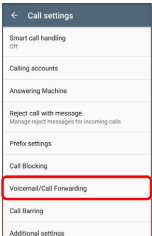
Call




 Call settings open.

3

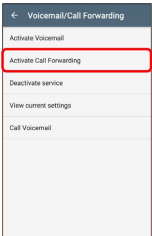
Voicemail/Call Forwarding



 Voicemail/Call Forwarding settings open.

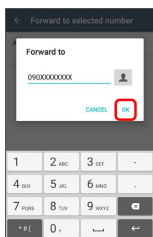
4

Activate Call Forwarding



5

All calls / Unanswered calls → Enter phone number to forward to → OK



- If **Unanswered calls** is selected, set ring time.
- Tap to select phone number to forward to from Contacts.

6

OK

Call Forwarding is activated.

### + Deactivating Voicemail/Call Forwarding

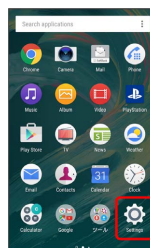
In Voicemail/Call Forwarding window, **Deactivate service** → **DEACTIVATE** → **OK**

Voicemail/Call Forwarding is deactivated.

## Using Voicemail

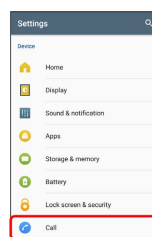
1

In Home Screen, → (Settings)



2

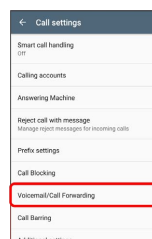
Call



Call settings open.

3

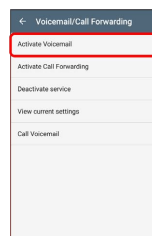
Voicemail/Call Forwarding



Voicemail/Call Forwarding settings open.

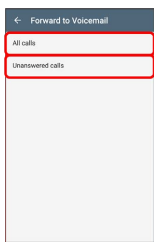
4

Activate Voicemail



5

All calls / Unanswered calls



· If **Unanswered calls** is selected, set ring time.

6

OK

Voicemail is activated.

· When new message is recorded, appears on Status Bar. Drag Status Bar down and Tap **New voicemail**, then follow the voice prompts.

Deactivating Voicemail/Call Forwarding

In Voicemail/Call Forwarding window, **Deactivate service** → **DEACTIVATE** → **OK**

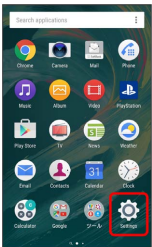
Voicemail/Call Forwarding is deactivated.

Using Call Waiting

This service requires subscription.

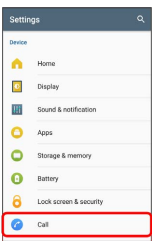
1

In Home Screen, → (Settings)



2

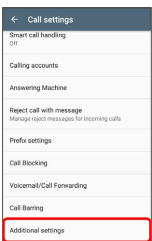
Call



Call settings open.

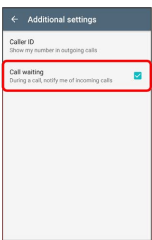
3

Additional settings



4

Call waiting ( )



Call Waiting is activated.

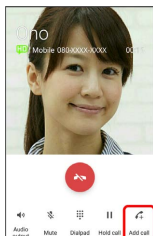
· When a second call arrives during a call, Call Waiting tone is heard. Drag right to answer.

## Using Group Calling

This service requires subscription.

1

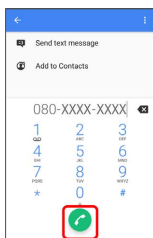
During a call, **Add call**



Recent calls appears.

2

Enter phone number



Call is added.

Alternatively, Tap contact in Recent calls to add call.

3

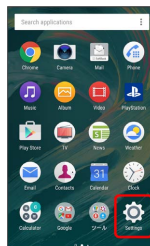
When the other party answers, **Merge**

Group Calling starts.

## Using Caller ID Notification

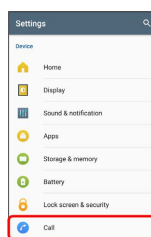
1

In Home Screen, (Settings)



2

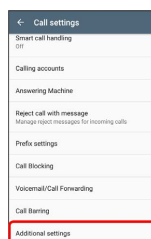
Call



Call settings open.

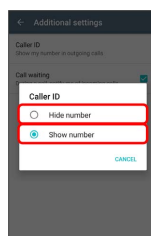
3

Additional settings



4

Caller ID **Hide number** / **Show number**



Caller ID is set.

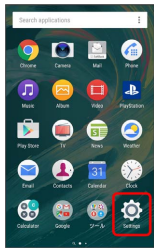
Using Call Barring

Restrict call and SMS.

- If a call or SMS is attempted while calling is restricted, a message appears. Message may take time to appear in some areas.

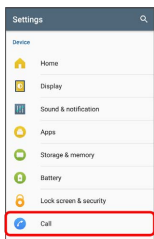
1


In Home Screen,    (Settings)



2

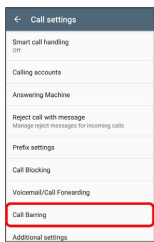
Call



 Call settings open.

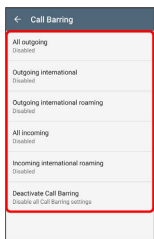
3

Call Barring




4

Tap target option to restrict



5

TURN ON

 Call Barring is set.

- To disable all call barring, Tap **Deactivate Call Barring** , then Tap **TURN OFF** .

## Using Contacts

Save phone numbers, mail addresses, etc. to Contacts.

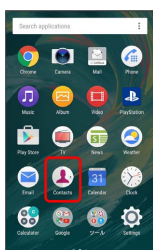
### ! Contacts Cautions


Information saved in Contacts may be lost or changed if Battery is removed for a long period or left uncharged. Accident or malfunction may also cause loss or change to information. It is recommended that you keep a separate copy of contacts and other important information. SoftBank Corp. is not responsible for any damages from lost or changed contacts.

## Adding New Contacts

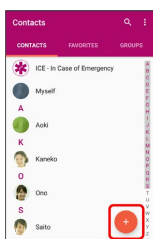
1

In Home Screen,    (Contacts)




 Contacts appear.

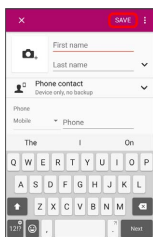
2




• If confirmation appears, follow onscreen instructions.

3









Enter items  **SAVE**



 Contact is added.

## + Saving Contacts from Call Window

Save a number entered in call window directly to Contacts.

In Home Screen,  (Phone)    Tap dialpad to enter number to save  **Add to Contacts**  **Create new contact**  Enter each item  **SAVE**



# Messaging & Internet

Messaging.....	44
Sending S! Mail/SMS.....	44
Using Gmail.....	46
Using Email.....	47
Using Chrome.....	47

## Messaging

### S! Mail

Exchange messages with S! Mail-compatible SoftBank handsets and email compatible devices (other mobiles, PCs, etc.) beyond SMS character entry limit; attach media files.

### SMS

Exchange short messages (up to 140 single-byte characters) using handset numbers as addresses.

### Gmail

Gmail is Google's webmail service. Handset automatically syncs with Gmail.

### Email

Use email (POP3/IMAP4) on handset.

- Set up an email account beforehand.
- Sending/receiving email on handset syncs handset and mail server; sent/received messages (in the POP protocol, received messages only) are also accessible from PCs.

## Sending S! Mail/SMS

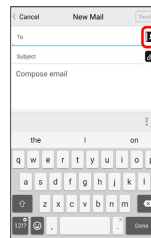
1

In Home Screen,  (Mail)  



2

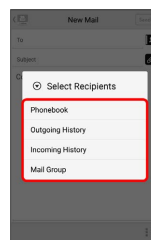
1



- Alternatively, enter phone numbers or email addresses in Recipient field directly.

3

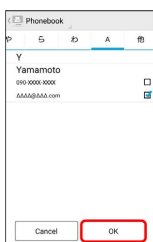
Phonebook / Outgoing History / Incoming History / Mail Group



- Tap **Phonebook**, **Outgoing History**, or **Incoming History** to select recipients from Phonebook, Outgoing History, or Incoming History.
- Tap **Mail Group** to select a mail group and set all the members on the list as recipients.

4

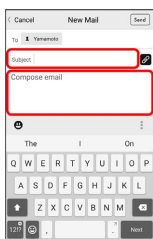
Select recipients → OK



- Tap **Phonebook** / **Outgoing History** / **Incoming History** / **Mail Group** to change recipient lists.
- After setting recipients, Tap **1 0000** to check recipients' phone numbers/email addresses or set them to Cc/Bcc.
- If recipients are set to Cc/Bcc, the mail is sent as S! Mail.
- To delete a recipient, Tap **1 0000** and then **X 0000**. Alternatively, Tap **1 0000** and then **Delete recipient**.

5

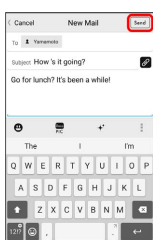
Tap Subject field/text entry field → Enter subject/text



- Tap **📎** to attach a file.
- If a subject is entered or a file is attached, the mail sent as S! Mail.

6

Send



S! Mail/SMS is sent.

- Failed S! Mail/SMS messages are saved as drafts.



## Sending S! Mail/SMS

### Switching S! Mail/SMS

S! Mail and SMS switch automatically when sending, depending on whether there is a subject, text length, etc.

- When creating mail, check which it will be sent as at top of Display.
  - "New Mail" appears: mail is sent as S! Mail.
  - "New SMS" appears: mail is sent as SMS.
- In Home Screen, **(Mail)** → **Settings** → **Common Settings** → Tap **SMS/S!Mail Automatic Switching** (☐) to allow selection between **✉ (S! Mail)** and **✉ (SMS)** when creating mail.

### About Drafts

When **⏮** is Tapped while creating S! Mail or SMS, the message is saved as a draft.




Drafts are indicated as **📧** in thread list, and are saved to **Draft Box** in folder list. Open an S! Mail/SMS draft to edit and send it.

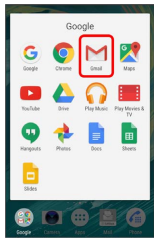
# Using Gmail

Use Google's webmail service. Use this service to exchange email.

## Creating/Sending Gmail

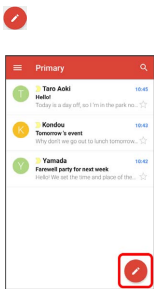
1


In Home Screen,  (Google)   (Gmail)



 Mail list opens.

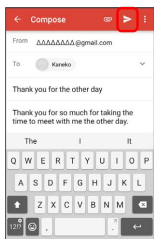
2




 Mail composition window opens.

3



Enter recipient/subject/mail text  







 Message is sent.

### + Operations when Composing Gmail



#### Adding Cc/Bcc

In mail composition window,  for recipient  Enter recipient





#### Attaching Files

In mail composition window,   Attach file   
Select application  Select file to attach

#### Saving Mail Being Composed as a Draft (Send Later)

In mail composition window,   Save draft

#### Deleting Mail Being Composed

In mail composition window,   Discard   


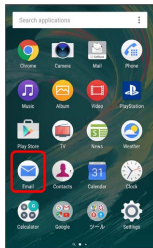
## Using Email


### Adding Accounts

Check usernames (user IDs), passwords, server names, etc. of your email accounts beforehand.

1

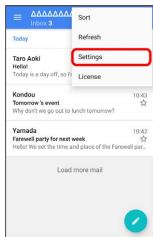
In Home Screen,   (Email)



 Account setup menu opens (if no account is set up).

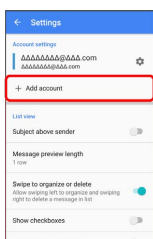
2

  Settings



3

Add account



4

Follow onscreen instructions to set up account.

 Email account is set up.

## Using Chrome

Use the browser simply by entering search words and URLs.

### SSL/TLS


SSL (Secure Sockets Layer) and TLS (Transport Layer Security) are protocols for encrypting sent/received data. While in a screen connected by SSL/TLS, data is encrypted to safely send/receive private information, credit card numbers, corporate secrets, etc., and provide protection against online threats (eavesdropping, falsification, impersonation, etc.).

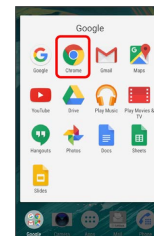
### SSL/TLS Cautions


When opening a secured page, users must decide as their responsibility whether or not to open the page with use of SSL/TLS. SoftBank Corp. and the Certification Authorities Symantec Website Security G.K. and Cybertrust Japan Co., Ltd. make no guarantees whatsoever to users regarding security of SSL/TLS.

### Using Chrome

1




In Home Screen,  (Google)  (Chrome)




 Chrome opens.

- If confirmation appears, follow onscreen instructions.
- Tapping Web links within text messages automatically opens Chrome.

2

Tap entry box at top  Enter search words or URL  







 Search results appear or a Web page opens.

 Chrome Operations


Signing in to My SoftBank

Access My SoftBank to check service charges or reward points, change contract details (subscribed price plan, optional services, etc.), check handset email address, use antisпам settings, etc.

In Chrome,   Bookmarks  My SoftBank   
Follow onscreen instructions

Searching within Web Page

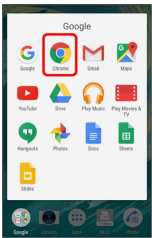
With Web page open,   Find in page  Enter search text


 Search results are shown highlighted.

Adding Bookmarks





1

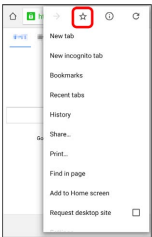
In Home Screen,  (Google)   (Chrome)




 Chrome opens.

2










Show Web page to add    










 Web page is bookmarked.

 Bookmark Operations

Editing Bookmarks

In Chrome,   Bookmarks  Touch & Hold target bookmark   Edit items    
· Alternatively, Tap  of bookmark  Edit .



Deleting Bookmarks

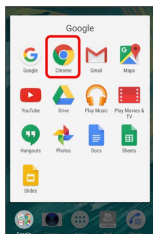
In Chrome,   Bookmarks  Touch & Hold target bookmark    
· Alternatively, Tap  of bookmark  Delete .

## Opening New Tabs

Open several tabs to switch between Web pages easily.

1

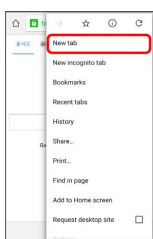
In Home Screen,  (Google)  (Chrome)






 Chrome opens.

2

 New tab



 New tab appears.

- Tap  to open a thumbnail list of currently opened tab and the recently-used applications. To switch tabs, Tap the thumbnail.
- If "Merge tabs and apps" in Chrome Settings is "Off",  appears next to the entry field in the top of window. Tap to show the currently-opened tabs in "Chrome" application (Number in the icon indicates number of currently-opened tabs.)



# Camera

- Capturing Still Images/Videos.....52
- Viewing Captured Still Images/Videos (Album).....55

## Capturing Still Images/Videos

### Capturing Still Images/Videos

#### File Format for Still Images

File format for still images is JPEG.

#### File Format for Videos

File format for videos is MPEG-4.

### Camera Cautions

#### If Lens Becomes Dirty

Fingerprints/smudges on lens prevent capturing of clear still images/videos. Wipe lens with a soft cloth beforehand.

#### Avoid Exposure to Direct Sunlight

Be careful not to expose lens to direct sunlight for long periods. May discolor color filter and affect color of images.

### Cautions on Capturing Still Images/Recording Videos

#### Copyrights and Portrait Rights

Photos and videos captured by handset are prohibited by copyright law from use without consent of the copyright holders, unless intended for personal use or any other purpose permitted by law. Also, use or alteration of another person's portrait or name without his or her permission may be a violation of portrait rights. When you post recorded photos and videos on Internet Web pages, etc., make sure to observe copyrights and portrait rights. Note that some performances, shows, and exhibitions may place limitations on recording even for personal use. Transmission of images protected by copyright or beyond the scope provided in copyright law is not possible.

#### Capturing or Sending Images

Be considerate of the privacy of individuals around you when taking and sending photos using Camera. Causing a public nuisance by using handset may be punishable under law.

### Camera Cautions

All captured photos are saved to handset memory or SD Card. Insert SD Card before using Camera.

If handset temperature rises, Camera may not activate or may stop operation.

Shutter sound or capturing start/stop sound may be faint if commercially available earphone set or Bluetooth® device is connected to handset.

Capturing at high resolution requires significant memory.

If autofocus frame does not appear when capturing photos, the subject may be out of focus.

Do not cover Mic when capturing videos or capturing photos in Sound Photo mode.

Capture videos with adequate battery charge.

### Flash/Photo Light Warning


Do not shine Flash/Photo Light close to eyes. Do not look at Flash/Photo Light directly while in use. Do not shine Mobile Light at other people's eyes. May affect eyesight, etc.

## Capturing Still Images

Captured still images are saved to handset (memory).

- To save to SD Card, insert SD Card and change the saving location setting before using Camera.

### 1

In Home Screen,  (Camera)

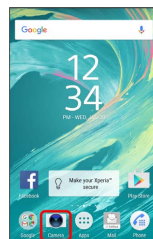


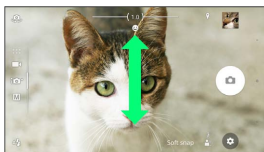


 Photo Viewfinder appears.

- If confirmation appears, follow onscreen instructions.
- Alternatively, Long Press  for one second or more using Quick launch, or in Lock screen, Flick  to activate Camera.
- If there is no operation for about three minutes on Viewfinder (about 30 seconds if activated using "Quick launch"), Camera operation ends.

2

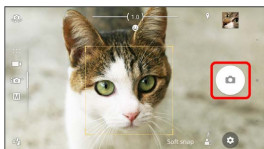
Swipe (Flick) Photo Viewfinder to switch to "SUPERIOR AUTO" or "MANUAL"



- Swipe (Flick) up or down in a landscape viewfinder, or left or right in a portrait viewfinder.
- To use Camera app, select an application in CAMERA APPS.

3

Aim Camera at subject → Check Viewfinder, then



Shutter clicks and still image is saved.

### Auto Focusing Frame

If the auto focusing frame does not appear when capturing still image, focusing may be failed.

### Capturing Operations (Still Images)

#### Using Zoom

Press Volume Key

- Pinch/Spread fingers on Viewfinder to zoom in/out.
- Volume Key operations vary by setting of Use Volume key as. At time of purchase, "Zoom" is set.
- When capturing with "AR effect," "Sweep Panorama," etc. set or with the front camera, Zoom cannot be used.

#### Capturing with Camera Key

In Home Screen, (Camera) → Aim Camera at subject →

- To capture using autofocus, Press halfway until autofocus frame changes to blue and shutter tone sounds, then Press down all the way.
- When frame of object tracking appears, Camera tracks subject to focus on.

#### Capturing with "Touch capture"

Turn on "Touch capture" before capturing.

In Home Screen, (Camera) → Tap Viewfinder


### Viewing Thumbnails

Tap thumbnail image


Captured still image opens.



## Capturing Videos

1

In Home Screen,  (Camera)

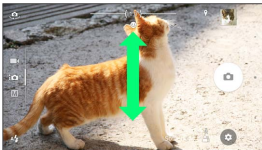


 Viewfinder appears.

- If confirmation appears, follow onscreen instructions.
- Alternatively, Long Press  for one second or more using Quick launch, or in Lock Screen, Flick  to activate Camera.
- If there is no operation for about three minutes on Viewfinder (about 30 seconds if activated using "Quick launch"), Camera operation ends.

2

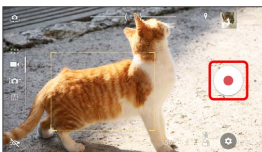
Swipe (Flick) Photo Viewfinder to switch to Video Viewfinder






- Swipe (Flick) up or down in a landscape viewfinder, or left or right in a portrait viewfinder.
- To use Camera app, select an application in CAMERA APPS.

3


Aim Camera at subject → Check Viewfinder, then 

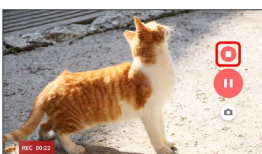


 Video capturing starts.

- To pause, Tap  or to resume, Tap .

4

To stop recording, 



 Video capturing stops and video is saved.


## + Capturing Operations (Videos)

### Using Zoom

Press Volume Key



- Alternatively, Pinch/Spread fingers on Viewfinder.
- Volume Key operations vary by setting of Use Volume key as. At time of purchase, "Zoom" is set.
- When capturing with "AR effect" etc. set or with the front camera, Zoom cannot be used.

### Capturing Still Image While Capturing Video

While capturing video, 

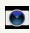
- Image resolution varies by Video resolution setting.

### Capturing with Camera Key

In Home Screen,  (Camera) → Aim Camera at subject → Press  to start/stop capturing


### Capturing with "Touch capture"

Turn on "Touch capture" before capturing

In Home Screen,  (Camera) → Aim Camera at subject → Tap Viewfinder to start/stop capturing

### Viewing Thumbnails

Tap thumbnail

 Captured still image/video opens.

# Viewing Captured Still Images/Videos (Album)

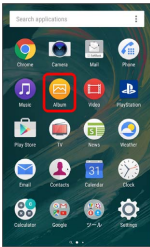
## Showing Still Images/Videos

Show captured or downloaded still images/videos. Supported file formats are as follow.

Type	File Format
Still image	JPEG (.jpeg, .jpg), GIF (.gif), PNG (.png), BMP (.bmp), WEBP (.webp)
Video	H.263 (.mp4, .3gp, .3gpp), H.264 (.mp4, .m4v, .3gp, .3gpp, .ts, .avi, .mkv), H.265 (.mp4, .mkv), MPEG-2 Video (.ts), MPEG-4 Video (.mp4, .m4v, .3gp, .3gpp), VP8 (.mkv, .webm), VP9 (.mkv, .webm), Xvid (.avi)

1

In Home Screen,   (Album)



 Still picture/video list opens.



- If confirmation appears, follow onscreen instructions.

2


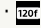

Tap still image/video



 Still image/video opens.

- Tap the image playback to show captured date & time or option menu icons.
- For video, Tap  and follow onscreen instructions.
- To select other files, Tap  to return to list, then select file again or Flick playback window left or right.

## Icons on Still Image/Video List



- Some icons are shown depending on the capture mode or Camera app.
-  is shown for Sound Photo file. Tap to play back image and sound.
  -  is shown for Timeshift video file.
  -  is shown for Timeshift video file with slow motion included.

## Operations when Viewing Still Images/Videos


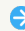
### Zooming In or Out Still Image

Tap Display twice or pinch to check a still image

### Playing Files in Slideshow

In still image playback,   Slideshow

### Switching Still Image List/Video List

On still image/video list,   Select an item



Music

Listening to Music.....58

# Listening to Music

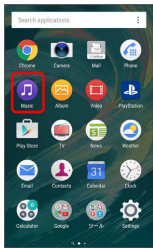
## Playing Music


Play back music, playlists, etc. Supported file formats are as follow.

- AAC-LC (.mp4, .m4v, .3gp, .3gpp, .ts, .avi, .aac, .m4a), AAC+ (.mp4, .3gp, .3gpp, .ts, .avi, .aac), eAAC+ (.mp4, .3gp, .3gpp, .ts, .avi, .aac), AAC-ELD (.mp4, .3gp, .3gpp), AMR-NB (.3gp, .3gpp, .amr), AMR-WB (.3gp, .3gpp, .awb), FLAC (.mkv, .flac, .mka), MP3 (.mp3), MIDI (.mid, .xmf, .mxmf, .rtttl, .rtx, .ota, .imy), Vorbis (.mkv, .webm, .mka, .ogg), PCM (.avi, .mkv, .mka, .wav, .aiff, .aif, .aifc), Opus (.mkv, .webm, .mka), ALAC (.m4a), WMA (.wma), DSD (.dsf, .dff)

### 1

In Home Screen,    (Music)








 Home screen of Music appears.

- Follow onscreen instructions.

## + Playing Back Songs in High-Resolution Audio Equivalent

Use compatible headphones.

In Music Home Screen,   Settings  Audio

settings  DSEE HX (  )

# Connectivity

Connecting by Wi-Fi.....	60
Using Bluetooth®Function.....	61

## Connecting by Wi-Fi

Handset supports Wi-Fi (wireless LAN). Access the Internet via a household Wi-Fi connection environment. For Wi-Fi router (manufactured by FON) users, see "[Fonルーター かんたん設定ガイド \(http://mb.softbank.jp/mb/special/network/pdf/wifi\\_howto\\_01.pdf\)](http://mb.softbank.jp/mb/special/network/pdf/wifi_howto_01.pdf)" for details.

### Automatic Updates for Optimizing Wi-Fi Connection

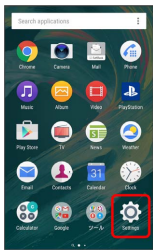
While using Wi-Fi, updates for optimizing connection may be received or applied automatically.

### Selecting a Network Connection

Enable Wi-Fi and select Wi-Fi network to connect.

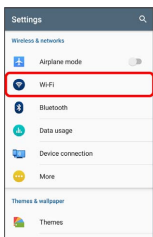
1


In Home Screen,    (Settings)



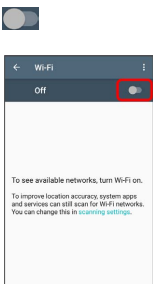
2



Wi-Fi





 Wi-Fi settings open.



3

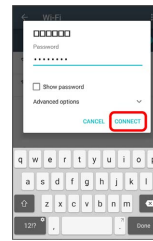



 Wi-Fi is enabled (  ).

- Access points are scanned. Available access points appear after scanning.
- To disable Wi-Fi, Tap  (  ).

4

Tap Wi-Fi network  Enter password  **CONNECT**






 Handset is connected.

- The password, for a household wireless LAN router, is sometimes found on a sticker on the router (WEP, WPA, KEY, etc.). Contact the router manufacturer for information. For password for a public wireless LAN, check with user's service provider.
- Entering a password is not required if an access point is not security protected.





### Wi-Fi Operations

#### Scanning Access Points

In Wi-Fi settings,   **Refresh**

 Available access points appear after scanning.

#### Connecting a WPS-Capable Device

In Wi-Fi settings,   **Settings**  **WPS Push Button** / **WPS PIN Entry**  Follow onscreen instructions

## Using Bluetooth®Function

Connect to a Bluetooth®-capable wireless phone, etc. for calls or to a hands-free device such as a headset.

### ? Hints

- Q. Cannot use Bluetooth®
- A. Is handset in Airplane mode? Bluetooth® turns off in Airplane mode. Turn on Bluetooth® enable in Airplane mode.

### ! Bluetooth® Function Cautions

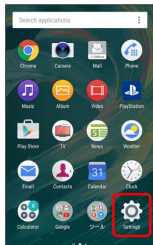
Information may not appear correctly on both devices depending on the transferred data.

### Enabling Bluetooth®Function

- Wireless connection to all Bluetooth® functions is not guaranteed for handset.
- Handset may not connect properly depending on the other device.
- Noise may be experienced with wireless calls and hands-free calls depending on the conditions.

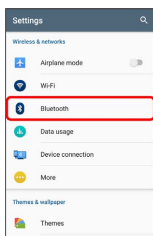
1


In Home Screen,   (Settings)



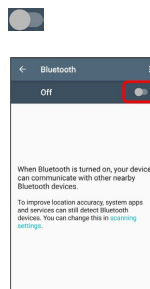
2



#### Bluetooth





 Bluetooth® settings open.

3



 Bluetooth® function is enabled (  ).

- To disable Bluetooth® function, Tap  (  ).

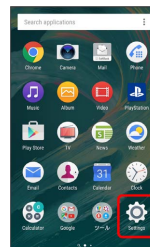
### Pairing Bluetooth® Devices

Search for and pair nearby Bluetooth® devices. Paired Bluetooth® devices can be connected simply.

- Enable the Bluetooth® function on the Bluetooth® devices being paired beforehand.

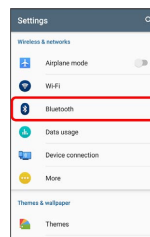
1


In Home Screen,   (Settings)




2


#### Bluetooth




 Bluetooth® settings open.

- Nearby Bluetooth® devices appear in "Available devices."
- If a target device is not found,  Tap **Refresh** and search again.

3

Tap device  Follow onscreen instructions to accept device

 The Bluetooth® device is paired to handset. Paired Bluetooth® devices appear in "Paired devices."

- Methods for accepting differ depending on devices being paired.



Global Services


Making Calls while Abroad..... 64

# Making Calls while Abroad


Carry "世界対応ケータイ海外ご利用ガイド" overseas.

## International Calls to Japan and Other Countries from Abroad

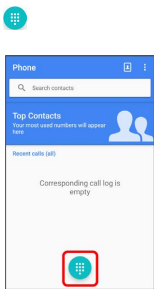
1


In Home Screen,  (Phone)




 Recent calls appears.

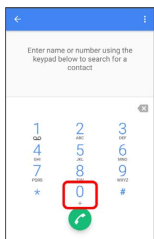
2




 Call window opens.

3

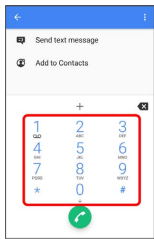
Touch & Hold 



 "+" is entered.

4


Enter country code then other party number (omit first 0)



· Do not omit first 0 from phone numbers when dialing Italy (39).

5




 Handset dials number. Call begins when other party answers.

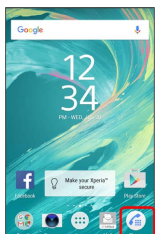
## Calls to Landline Phones/Cell Phones in Country of Stay


Place calls the same way you would within Japan.

- Do not enter country code or omit first 0 from phone numbers.

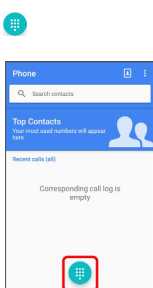
1

In Home Screen,  (Phone)



 Recent calls appears.

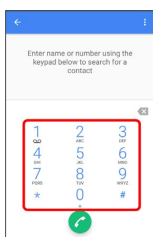
2



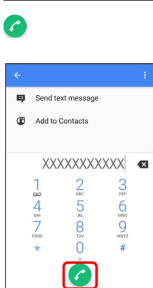
 Call window opens.


3

Tap dialpad to enter the other party's number



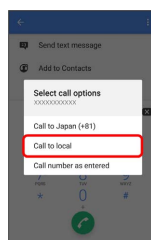
4




 Call option selection opens.

5

Call to local



 Handset dials number. Call begins when other party answers.





# Handset Settings

- Handset Settings.....68
- Wi-Fi Settings.....69
- Other Settings.....70
- Sound & Notification Settings.....70
- App Settings.....71
- Account & Sync Settings.....72

# Handset Settings

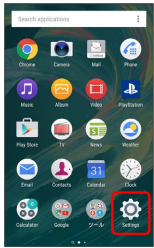
## Handset Settings


In Home Screen,  Tap  (Settings) to customize operation of handset functions.  
Handset settings include the following items.

Item	Description
Airplane mode	Disable all radio waves emitting functions with handset powered on.
Wi-Fi	Set Wi-Fi connection.
Bluetooth	Set Bluetooth® connection.
Data usage	Check mobile data traffic and set limit.
Device connection	Set to connect PC etc.
More	Set other functions for wireless and networks.
Themes	Change wallpaper of Home Screen or Lock Screen, color for a part of Settings background, etc. to a themed image.
Wallpaper	Set wallpaper.
Home	Switch Home application.
Display	Set screen brightness, font size, etc.
Sound & notification	Set for sound/notification such as ringtone, touch sounds.
Apps	Manage or delete installed apps.
Storage & memory	Optimize storage and memory, transfer data, or uninstall apps to ensure available internal storage memory.
Battery	Set power saving items and check battery usage.
Lock screen & security	Set security functions such as Screen lock, SIM card lock, etc.
Call	Set network services such as Voicemail, Call Forwarding, and Answering Machine.
Location	Set location information.
Account & sync	Create/add accounts and sync accounts.
Google	Set for Google services.
Backup & reset	Back up handset information and initialize handset.
Introduction & Tips	Check, operate, or set handset introduction or hints.
Language & input	Set functions for language and text entry.
Date & time	Set functions for date and time.
Accessibility	Set functions for TalkBack, etc.
About phone	Check handset status.

1


In Home Screen,   (Settings)



 Handset settings open.

2

Set items

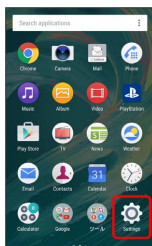
 Setting is complete.

## Wi-Fi Settings

### Wi-Fi

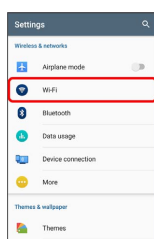
1


In Home Screen,    (Settings)



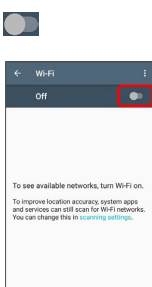
2



### Wi-Fi





 Wi-Fi settings open.



3

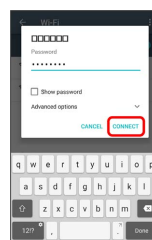



 Wi-Fi is enabled (  ).

- To disable Wi-Fi, Tap  (  ).

4

Tap Wi-Fi network  Enter password  **CONNECT**



 Handset is connected.

- The password, for a household wireless LAN router, is sometimes found on a sticker on the router (WEP, WPA, KEY, etc.). Contact the router manufacturer for information. For password for a public wireless LAN, check with user's service provider.
- Entering a password is not required if an access point is not security protected.

# Other Settings

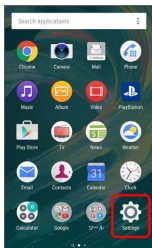
## More

Set other functions for wireless and networks. Settings can be made for the following items.

Item	Description
Tethering & portable hotspot	Use handset as Wi-Fi router to access Internet from a PC, game console, etc.
VPN	Add a VPN.
Mobile networks	Set a network type, etc.
NFC / Osaifu-Keitai settings	Set NFC / Osaifu-Keitai settings.

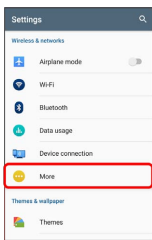
1


In Home Screen,    (Settings)



2


More



 More settings open.

3

Set items

 Setting is complete.

# Sound & Notification Settings

## Sound & notification

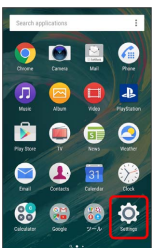
Set ringtone, touch sounds, etc. Settings can be made for the following items.

Item	Description
Audio settings	Set for sound.
Accessory settings	Set sound quality etc. when connecting accessories.
Media volume/ Alarm volume/ Ring volume	Adjust Media volume, Alarm volume, Ring volume, and Notification sound.
Also vibrate for calls	Enable vibration for ringtone.
Increasing ringtone	Set whether to increase ringtone gradually.
Phone ringtone	Set phone ringtone.
Notification sound	Set notification sound.
Other sounds	Set Dialpad tones/Screen locking sounds/ Touch sounds/Vibrate on touch.
Notification light	Enable Notification Lamp for missed calls, etc.
When device is locked	Enable to show notification contents in lock screen.
App notifications	Set notification from apps individually.
Do not disturb	Set notification when "Do not disturb" <sup>1</sup> is set to "Priority only allows", or Automatic rules.
Notification access	Enable application for reading notifications.
Do not disturb access	Set whether to enable apps accessing notifications that are not notified by settings in "Do not disturb" <sup>1</sup>

1 Alternatively, set from Quick Settings. To use, Tap **EDIT** on Quick Settings panel and enable "Do not disturb" quick setting in advance.

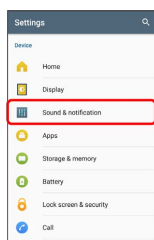
1


In Home Screen,    (Settings)



2


## Sound &amp; notification



 Sound & notification settings open.

3

Set items

 Setting is complete.

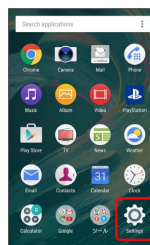
## App Settings

## Apps

Manage or delete installed applications.

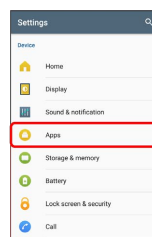
1


In Home Screen,    (Settings)



2


## Apps



 Apps confirmation opens.

3

Tap items

 Check applications.

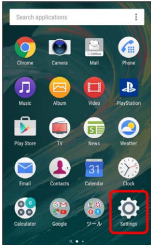
## Account & Sync Settings

### Account & sync

Create/add accounts and sync accounts.

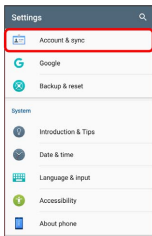
1


In Home Screen,    (Settings)



2

### Account & sync




 Account & sync window opens

3


### Add account



 Add account window opens.

4

Select account to add  Follow onscreen instructions

 Account is added.

## + Account Operations

### Setting Auto-sync



In Account & sync window,   Auto-sync data 

OK

• On ( ☒ )/OFF ( ☐ ) switches every time when Auto-sync data .

• When confirmation appears, follow onscreen instructions.

### Setting Applications to Sync for Each Account

In Account & sync, Tap type of account to set  Tap account  Tap sync item

• Tap item to toggle on ( ☒ )/off ( ☐ ).

• Tap item to synchronize when Auto-sync is disabled.

# For Assistance

Specifications.....	74
Customer Service.....	74

## Specifications

### Handset

Item	Description
Dimensions (W x H x D)	Approx. 71 × 144 × 8.6 mm
Weight	Approx. 165 g
Maximum Output	GSM (850/900 MHz): 2 W GSM (1800/1900 MHz): 1 W UMTS: 0.25 W 4G (AXGP): 0.2 W 4G (LTE): 0.2 W
Continuous Talk Time	3G: Approx. 28 hours GSM: Approx. 10 hours 4G (LTE): Approx. 23 hours
Continuous Standby Time	3G: 590 hours GSM: 550 hours 4G (AXGP): Approx. 520 hours 4G (FDD-LTE): Approx. 530 hours
Charging Time	SoftBank SELECTION Qualcomm® Quick Charge™ 2.0 AC Adapter for smartphones (SB-AC12-HDQC): Approx. 145 minutes SoftBank SELECTION AC Adapter (Micro USB) 1.0A for smartphones (SB-AC13-HDMU): Approx. 195 minutes
One Seg viewing time	Approx. 8.3 hours
Full Seg viewing time	Approx. 7.1 hours

### Internal Battery

Item	Description
Voltage	DC 3.8 V
Type	Lithium-ion
Capacity <sup>1</sup>	2570 mAh

<sup>1</sup> Provides an indication of handset usable time etc.

### TV Antenna Cable (SODAB1)

Item	Description
Dimensions	Length approx. 148 mm
Weight	Approx. 5 g

## Customer Service

For SoftBank handset or service information, call General Information. For repairs, call Customer Assistance.

### SoftBank Customer Support



#### General Information

From a SoftBank handset, dial toll free at 157  
From a landline/IP phone, dial toll free at 0800-919-0157



#### Customer Assistance (Repairs/Lost Handsets)

From a SoftBank handset, dial toll free at 113  
From a landline/IP phone, dial toll free at 0800-919-0113  
If you cannot reach a toll free number, use the number (charges apply) below for your service area:  
Hokkaido Area, Tohoku Area, Hokuriku Area, Kanto, Koshinetsu Area: 022-380-4380  
Kansai Area: 06-7669-0180  
Chugoku Area, Shikoku Area, Kyushu, Okinawa Area: 092-687-0010

### Smartphone Technical Support Center

From a SoftBank handset, dial toll free at 151  
From a landline/IP phone, dial toll free at 0800-1700-151

### SoftBank Global Call Center

From outside Japan, dial +81-92-687-0025 (toll free from SoftBank handsets)  
If handset is lost/stolen, call this number immediately (international charges apply)

# Safety Precautions




Safety Precautions.....	76
Important Product Information.....	84
Bluetooth®/Wi-Fi (WLAN).....	86
Waterproofing/Dustproofing.....	87
End User License Agreement.....	89
Export Controls and Regulations.....	90
Intellectual Property Rights.....	90
RF Exposure Information/Specific Absorption Rate (SAR) Information.....	92
FCC Statement for the USA.....	94
Declaration of Conformity for 502SO.....	94
VCCI.....	95

# Safety Precautions

Read safety precautions before using handset.  
Observe precautions to avoid injury to self or others, or damage to property.







## Safety Precautions

These labels indicate the degree of risk from improper use.  
Make sure you thoroughly understand their meanings before reading on.

Mark	Descriptions
 <b>DANGER</b>	Great risk of death or serious injury <sup>1</sup> from improper use
 <b>WARNING</b>	Risk of death or serious injury <sup>1</sup> from improper use
 <b>CAUTION</b>	Risk of minor injury <sup>2</sup> or damage to property <sup>3</sup> from improper use


- 1 Serious injury includes: Loss of eyesight, physical injury, high temperature burns, low temperature burns, electric shock, fractures, poisoning and other conditions having side effects or requiring hospitalization or long term treatment.
- 2 Minor injury includes: Physical burns (high-temperature and low-temperature), electric shock, and other conditions not requiring hospitalization or long-term treatment.
- 3 Damage to property includes: Incidental damage to structures and household property and/or to pets and livestock.

These symbols indicate prohibited or compulsory actions. Make sure you thoroughly understand their meanings before reading on.

Mark	Descriptions
 Prohibited	Prohibited actions
 Do Not Disassemble	Disassembly prohibited
 Avoid Liquids Or Moisture	Exposure to liquids prohibited
 Do Not Use Wet Hands	Use with wet hands prohibited
 Compulsory	Compulsory actions
 Disconnect Power Source	Unplug AC Charger from outlet

Handset, TV Antenna Cable, Desktop Holder (Optional Accessory), AC Charger (Optional Accessory)

## DANGER

 Prohibited

Do not use, store, leave in a high temperature or heat accumulating place (e.g. near fire or heater appliances, under kotatsu or bedding, in direct sunlight, inside a sun-heated car, etc.)

May cause fire, burns, injury, electric shock, etc.

---

 Prohibited Prohibited Prohibited Do Not Disassemble Avoid Liquids Or Moisture



Do not allow liquids such as water (drinking water, sweat, seawater, urine of pets) to come into Charging Terminals or External Device Port.

May cause fire, burns, injury, electric shock, etc.

For Waterproofing, see "[Waterproofing/Dustproofing](#)."



Use optional accessories specified by SoftBank.

Using unspecified accessories may cause fire, burns, injury, electric shock, etc.

## ⚠ WARNING



Do not drop, stomp, throw, or otherwise subject to strong force, impact, or vibration.

May cause fire, burns, injury, electric shock, etc.



Do not allow Charging Terminals or External Device Port to contact conductive materials (metal parts, pencil leads, etc.), or do not allow dust to enter inside.

May cause fire, burns, injury, electric shock, etc.



Do not cover or wrap with bedding or other cloths while using or charging.

May cause fire, burns, etc.



Stop charging if not complete when the prescribed charging time has passed.

Overcharge may occur resulting in fire, burns, injury, etc.



Power off handset or stop charging before entering a gas station or other places where flammable gas or dust may generate.

Using in a place where flammable gas, etc. generates may cause explosion, fire, etc.

Always use Osaifu-Keitai in a gas station, etc. with handset powered-off. (Cancel NFC/Osaifu-Keitai lock before turning the power off.)



Take the following actions in case of abnormal smell, noise, smoke, heat generation, discoloring or deformation while using, charging, or storing.

-Disconnect the power plug from an outlet

-Power off handset

Continued use may cause fire, burns, injury, electric shock, etc.

## ⚠ CAUTION



Prohibited

Do not use damaged handsets or related accessories.

May cause fire, burns, injury, etc.



Prohibited

Do not place handset on unstable/uneven surfaces. Be extra careful while the vibrator is set.

Handset may drop and cause injury



Prohibited

Do not use or store handset and related accessories in humid, dusty, or high-temperature places.

May cause fire, burns, injury, electric shock, etc.

For Waterproofing, see "[Waterproofing/Dustproofing](#)."



Prohibited

Do not allow children to use handset or related accessories in the wrong way. Guardians should supervise use by children.

May cause injury, etc.



Prohibited

Do not place handset and related accessories within an infants' reach.

Infants may swallow handset or related accessories and cause injury, electric shock, etc.



Compulsory

Handset temperature may become high when used for a long time or while charging. Avoid touching handset for a long time involuntarily such as by falling asleep, etc.

While using apps, calling, transmitting data, watching TV or videos, or charging the battery, the temperature of handset or AC Charger (optional accessory) may become high.

Touching a high-temperature area for a long time may cause redness, itching, rash of skin, or low-temperature burns.

## Handset

## ⚠ DANGER



Prohibited

Do not throw handset into a fire or apply heat.

Internal Battery may ignite, explode, overheat, or leak causing fire, burns, injury.



Prohibited

Do not penetrate with nails (penetrate with sharp objects), hit with a hammer (hard objects), stomp, or otherwise subject handset to strong force.

Internal Battery may ignite, explode, overheat, or leak causing fire, burns, injury.



Compulsory

If the substance etc. of Internal Battery gets into your eyes, do not rub them; immediately rinse with clean water and consult a doctor.

May cause loss of sight, medical problem, etc.



Compulsory

If the internal substance etc. of Display gets into your eyes or mouth, do not rub them; immediately rinse with clean water and consult a doctor.

The internal substance etc. of Display may cause loss of sight, medical problem, etc.

## ⚠ WARNING



Prohibited

Do not light up or flash the light with the light-emitting part close to other people's eyes.

Keep away from infants.

May harm eyesight. Flash may impair vision or frighten others causing accidents such as injury.



Prohibited

Do not light up or flash the light toward a driver of a car.

May hinder driving and cause accidents, etc.



Prohibited

Do not look at a repeatedly blinking screen for a long time.

May cause twitches, loss of consciousness, etc.



Prohibited

Do not put liquid such as water (drinking water, sweat, sea water, urine of pets, etc.), metal, or flammable object into SIM Card/SD Card Slot.

Do not insert SIM Card or SD Card in the wrong position or orientation.

May cause fire, burns, injury, electric shock, etc.



Prohibited

Do not expose the camera lens to direct sunlight, etc. for a long time.

May cause fire, burns, injury, etc. due to light-condensing of lens.



Compulsory

Power off handset or set to Airplane mode before boarding an aircraft.

Use of handset on board an airline is restricted. Follow the airline's instructions.

The radio wave of handset may affect electronic devices of the aircraft.



Compulsory

For use in hospitals, follow the medical facility's instructions.

Power off handset in a place where its use is prohibited. Handset use may affect electronic devices or other electronic medical equipment.



Compulsory

Always keep handset away from your ear when calling hands free, ringing for incoming calls, or during standby.

Adjust the sound volume adequately when playing games or playing back videos or music with an earphone/microphone, etc. connected to handset.

Listening at a high volume or using for a long time may cause hearing disability, etc.

Inability to hear ambient may lead to accidents.



Compulsory

Users with heart conditions should adjust vibration and ringtone volume as needed.

Strong vibration or loud volume may affect heart conditions.



Compulsory

When using electric medical equipment, etc., check with the equipment vendor or distributor for information about the effects of radio waves.

Handset radio waves may affect electronic medical equipment.



Compulsory

Power off handset near electronic devices or equipment operating on high precision control or weak signals.

Handset use may cause electronic malfunctions, etc.

\* Take additional care near these devices: Hearing aids, implanted cardiac pacemakers, implanted cardioverter defibrillators, other electronic medical equipment, and other automatically controlled devices or equipment.

For users of implanted cardiac pacemakers, implanted cardioverter defibrillators, other electric medical equipment, check with the equipment vendor or distributor for information about the effects of radio waves.



Compulsory

If Display or Camera lens is broken, do not touch the broken glass or exposed inside of handset.

Touching the broken or exposed part may cause burns, injury, electric shock, etc.



Compulsory

If Internal Battery leaks or has an unusual smell, immediately stop using, and keep away from fire.

The leaked fluid may catch on fire causing ignition, explosion, etc.



Compulsory

Do not allow a pet, etc. to bite handset.

Internal Battery may ignite, explode, overheat, or leak causing fire, burns, injury, etc.

## ⚠ CAUTION



Prohibited

When using the motion sensor, ensure the safety of the surroundings and hold handset firmly, not swinging around more than necessary.

Failure to do so may cause accidents such as injury.



Prohibited

If Display is broken, do not allow the leaked internal substance to contact the skin of your face or hands, or clothes.

May cause loss of eyesight, injury of skin, etc.

If the internal substance gets into your eyes or mouth, or contacts your skin or clothes, immediately rinse with clean water.

Also, in case it gets into your eyes or mouth, immediately consult a doctor after rinsing.



Prohibited

Do not dispose handset together with ordinary trash.

May ignite causing fire, burns, injury, etc. Also, may cause environmental destruction. Bring unnecessary handset into a sales outlet such as a SoftBank shop or follow the municipality instructions for recycling.



Prohibited

If the internal fluid is leaked from Internal Battery, do not allow it to contact the skin of your face or hands, or clothes.

May cause loss of eyesight, injury of skin, etc.

If the internal substance gets into your eyes or mouth, or contacts your skin or clothes, immediately rinse with clean water.

Also, in case it gets into your eyes or mouth, immediately consult a doctor after rinsing.



Compulsory

Before using handset in a car, check with the car manufacturer or dealer for information about the effects of radio waves.

In rare cases, handset radio wave may affect the vehicle's electronic equipment in some car models. In that case, stop using handset immediately.



Compulsory

If skin abnormalities develop during use, immediately stop using handset and consult a doctor. Continuing its use may cause itching, rashes, eczema, or other symptoms depending on the user's physical condition.

For the material of each parts, see "[Material List](#)."



Compulsory

Make sure that metallic pieces (cutter blade, staples, etc.) are not adhered to Earpiece/ Speaker or Speaker since magnetic parts are included.

Adhered objects may cause injury, etc.



Compulsory

Watch Display in a well-lit place with enough distance kept.

Watching in a dark place or getting too close to Display may reduce visual acuity, etc.

## Desktop Holder (Optional Accessory), AC Charger (Optional Accessory)

### WARNING



Prohibited

Do not use AC Charger (optional accessory) if the cord is damaged.

May cause fire, burns, electric shock, etc.



Prohibited

Do not use AC Charger (optional accessory), Desktop Holder (optional accessory) in a humid place such as bath rooms, etc.

May cause fire, burns, electric shock, etc.



Prohibited

If thunder is audible, do not touch AC Charger (optional accessory).

May cause electric shock, etc.



Prohibited

Do not short circuit Charging Terminals when it is connected to a power outlet. Also, do not allow body parts such as your hands or fingers to contact Charging Terminals.

May cause fire, burns, electric shock, etc.



Prohibited

Do not put heavy objects on the cord of AC Charger (optional accessory) or pull it strongly.

May cause fire, burns, electric shock, etc.



Prohibited

When plugging or unplugging AC Charger (optional accessory) to or from a power outlet, do not allow metals to come in contact.

May cause fire, burns, electric shock, etc.



Prohibited

Do not use a travel converter for overseas use when charging with AC Charger (optional accessory).

May ignite, overheat, cause electric shock, etc.



Prohibited

Do not apply unnecessary force to the connection part when handset and AC Charger (optional accessory) are connected.

May cause fire, burns, injury, electric shock, etc.



Do Not Use Wet Hands

Do not touch the cord of AC Charger (optional accessory), Charging Terminals, Power plug, Desktop Holder (optional accessory) with wet hands.

May cause fire, burns, electric shock, etc.



Compulsory

Use with specified power supply and voltage.

Also, use AC Charger for global use (optional accessory) when charging overseas.

Using the incorrect power supply and voltage may cause fire, burns, electric shock, etc.

AC Charger: 100V AC (Household AC power outlet only)

AC Charger for global use: 100V to 240V AC (Household AC power outlet only)



Compulsory

Wipe off dust on the power plug.

Using with dust adhered may cause fire, burns, electric shock, etc.



Compulsory

Firmly insert the power plug of AC Charger (optional accessory) to an outlet.

Failure to do so may cause fire, burns, electric shock, etc.



Compulsory

When unplugging from an outlet, grasp AC Charger (optional accessory) main unit without applying force such as pulling the cord.

The cord of AC Charger may be damaged if it is pulled out and it may cause fire, burns, electric shock, etc.



Compulsory

Insert or remove the connector of AC Charger (optional accessory) straight against the port without applying force such as pulling the cord.

Incorrect insertion or removal may cause fire, burns, injury, electric shock, etc.



Compulsory

Stop using handset immediately if Charging Terminals are deformed or bent.

Or, do not use AC Charger even with the deformation fixed.

Charging Terminals may short-circuit causing fire, burns, injury, electric shock, etc.



Disconnect Power Source

Disconnect the power plug of AC Charger (optional accessory) when it is not used.

Keeping the power plug connected may cause fire, burns, injury, electric shock, etc.



Disconnect Power Source

If liquid such as water (drinking water, sweat, seawater, urine of pets, etc.) gets inside, immediately disconnect the power plug from an outlet.

May cause fire, burns, electric shock, etc.



Disconnect Power Source

When cleaning, disconnect the power plug from an outlet.

Failure to do so may cause fire, burns, electric shock, etc.

## ⚠ CAUTION



Prohibited

Do not touch AC Charger (optional accessory) that is connected to an outlet for a long time.

May cause burns, etc.

## SIM Card

## ⚠ CAUTION



Compulsory

When handling SIM Cards, be careful of the cut surface so as not to hurt your body parts such as fingers.

May cause injury, etc.

## Handset Use & Electronic Medical Equipment

### WARNING



Compulsory

Persons with an implanted pacemaker or defibrillator should keep handset at least 15 cm away from the device.

Handset radio waves may affect implanted pacemakers or defibrillators.



Compulsory

When using electronic medical equipment (other than implanted cardiac pacemakers/defibrillators) outside medical facilities, check with the equipment vendor or distributor for information about the effects of radio waves.

Handset radio waves may affect electronic medical equipment.



Compulsory

Disable handset transmissions (e.g. airplane mode) or power off handset when it is difficult to keep a distance of at least 15 cm away from others such as in a crowd.

There may be someone who is wearing an implanted pacemaker or defibrillator.

Radio waves may interfere with implanted pacemakers or defibrillators causing such devices to malfunction.



Compulsory

Observe each medical facility's instruction when using handset.

Handset radio waves may affect electronic medical equipment.

## Material List

· Xperia™ X Performance Main Unit

Part	Material/Surface Treatment
Exterior Case (Frame, Headphone Port)	Nylon resin (with glass)/-
Exterior Case (Side, lower part on back side)	Nylon resin (with glass)/Coating
Exterior Case (SIM Card/SD Card Slot Cover), Volume Key, Camera Key	Polycarbonate resin/Coating
Exterior Case (Back side)	Aluminum alloy/Anodizing
Transparent plate (Display, Camera lens)	Strengthened glass/AFP processing
Transparent plate (Flash/Photo Light)	Acrylic resin/-
Power Key	Epoxy resin/Coating
Speaker	Polyester resin/Dyeing
Camera ring (Back side)	Stainless steel/- (white), PVD processing (Graphite Black, Lime Gold, Rose Gold)
↻ mark sticker	PET/-
Rubber gasket of SIM Card/SD Card Slot	Silicone rubber/-
SIM Card/SD Card Tray	Polyacetal/-

· TV Antenna Cable (SODAB1)

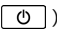
Part	Material/Surface Treatment
Connector plug (Body), Cable, Headphone connector terminal (Body)	Elastomer resin/-
Connector plug (Metal parts)	Brass/Gold-plating

# Important Product Information

## Handset, SIM Card, TV Antenna Cable, Desktop Holder (Optional Accessory), AC Charger (Optional Accessory)

- Do not get wet. Desktop Holder (optional accessory), AC Charger (optional accessory) and packaged accessories are not waterproof. Avoid using in humid places such as a bathroom and exposing it to rain. Contact to dampness from sweat by wearing on your body may cause corrosion inside resulting in malfunction. If malfunction is determined to be caused by above water exposures, warranty will not apply to repair. In the case that repair is possible, repair charge is incurred.
- External abnormalities such as damage or deformation may degrade the waterproof/dustproof performance.
- Use handset, SIM Card (inserted in handset) within temperatures of 5°C to 35°C and humidity 35% to 85%. Avoid extreme temperatures, humidity, direct sunlight (temporary use at 36°C to 40°C and humidity 86% to 90%).
- Charge battery within temperatures of 5°C to 35°C.
- Do not use handset, SIM Card, or AC Charger (optional accessory) in a dusty place, where there is much vibration, or near landline phone, TV, radio, etc.
- For using power outlet with drop-off prevention structure, see the user's manual.
- Internal Battery type is as follows.

Symbol on Label	Battery Type
Li-ion00	Lithium-ion

- Storing handset with full-charged or insufficient battery level deteriorates battery performance. It is recommended to store handset with 40% battery level.
- Turning off by pressing Power Key (  ) does not shut off handset from power source completely. Unplug AC Charger power plug to completely turn it off. Use AC Charger (optional accessory) near a power outlet for easy unplugging in case that malfunction is detected.
- Display may become dim when handset temperature rises. It is not abnormal.
- Do not subject handset to excessive shock. Do not deform External Device Port; may cause malfunction.
- Occasionally clean Charging Terminals with a dry, cotton swab etc. Dirt on Charging Terminals may cause power shut-off or insufficient charging. Take care not to damage Charging Terminals when cleaning.
- Clean handset, SIM Card, or AC Charger (optional accessory) with a dry, soft cloth. Rubbing hard with a dry cloth etc. may scratch them. Wiping off with wet dustcloth may cause malfunction. Using benzine, thinner, alcohol, detergent, etc. may fade color/print.
- Occasionally clean Headphone Port and External Device Port with a dry cotton swab etc. Dirt on them may cause contact failure. Do not deform Headphone Port, External Device Port or connecting plug by putting pressure when cleaning.
- Do not leave Camera in direct sunlight. Concentrated sunlight through Lens may cause handset to malfunction.

- Do not bring magnetic data or magnetic objects close to handset. Magnetic data on cash card, credit card, etc. may be erased or may cause handset malfunction.
- Do not remove IMEI printed sticker or Nameplate.
- Use Attachment 52B for setting handset into Desktop Holder (optional accessory).

## Charging

- AC Charger (optional accessory) may become warm while charging. It is not abnormal.
- If charging is started, handset can power on although it is unavailable for operation. For this reason, avoid charging in a place where handset use is prohibited (in aircraft, hospital, etc.)
- Check battery level with Status Indicator at the top of screen.
- Operation time of Internal Battery varies by usage environment or the battery condition.
- Internal Battery is consumable item. Operation time per charge decreases by charging repeatedly. When operation time with full-charged is extremely shortened, it is time to replace. Internal Battery is not customer-replaceable. Bring handset to a SoftBank Shop etc. to replace Internal Battery. Fee is incurred for the replacement. Contact a SoftBank Shop or [SoftBank Customer Support](#).
- Using application while charging may shorten Internal Battery life.

## Touchscreen

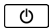
- Handset uses a touchscreen Display. Operate with your fingers on Display.
- Touch with your fingers lightly. Do not press forcibly with fingers or push with a sharp-pointed object (nail, ball-point pen, pins, etc.)
- Touchscreen may not work or malfunction in the following cases:
  - Operation with fingernail
  - Foreign object on Display
  - Protection sheet or sticker applied on Display
  - Waterdrop or dew condensation on Display
  - Operation with fingers wet or sweaty
  - Operation under water
- Although Display is made with hardened and shatterproof glass, touching scattered or exposed parts accidentally may cause injuries.

## Earpiece/Speaker

Handset earpiece is also used as a speaker. Loud sound may be heard from the speaker when playing sound, for arriving incoming calls, etc.

Subjecting your ears to loud sound may affect your hearing ability. Use Earpiece/Speaker with care to prevent your ears from being subject to loud sound. For example, remove Earpiece/Speaker from your ears as soon as a call is ended.

## Fingerprint Authentication




- Fingerprint authentication uses the characteristics of your fingerprint. If your fingerprint image has few characteristics, fingerprint authentication may not be available.
- Authentication performance (authenticating fingerprint when using Fingerprint Sensor (  )) depends on usage condition. If your finger is under any of the following conditions, registration of fingerprint may be difficult or authentication performance may degrade. Authentication performance may be improved by washing or drying hands, registering a different finger, registering fingerprint using a wider surface of your finger, etc.
  - Wrinkled after taking a bath, etc.
  - Wet with water, sweat, etc.
  - Dried
  - Covered with grease (e.g. hand cream)
  - Dirty with mud or grease
  - Rough or injured (cut, inflammation, etc.)
  - Abraded and faded
  - The shape of fingerprint has changed due to weight loss or weight gain
  - Faded due to abrasion, etc.
  - The surface condition of finger is extremely different from when you registered fingerprint
- Personal authentication and identification are not completely guaranteed by fingerprint authentication technology. Note that SoftBank Corp. is not liable for any damage incurred due to misuse by a third party or due to handset being unable to be used.

### Precautions on Fingerprint Sensor

- Do not hit or apply strong impact. This may cause a malfunction or damage. Also, do not scratch the surface or poke it with a sharp object such as a ballpoint pen or pin tip.
- Do not attach stickers or do not daub with ink, etc.
- If dirt such as dust or sebum is attached to Fingerprint Sensor, reading fingerprints may be difficult or the authentication performance may be degraded. Occasionally clean the surface of Fingerprint Sensor.
- If the time of touching is too short or too long, authentication may fail. Touch the center of Fingerprint Sensor straight with the vortex of your fingerprint.
- Activating Fingerprint Sensor may fail if a finger is placed on it before starting registration or authentication. Release your finger once and try again.

## Technical Conformity

Handset is certified as wireless equipment for low power electric data communication based on the Radio Law. No license is required for using handset as the wireless radio station. However, disassembling/modifying handset may be subject to penalty by law.

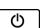
- Never use modified handset. Using modified handset is a violation of the Radio Law.
- Handset is compliant with the technical standard conformance of specified wireless equipment based on the Radio Law, and as a proof of it, the "Technical Compliance Mark  " appears on the electronic nameplate of handset. To view the electronic nameplate, in Home Screen,  

    .

The technical standard conformance certification etc. is invalidated by removing the screws and altering the inside of handset. Using handset with invalid technical standard conformance certification etc. is a violation of the Radio Law.

- Do not alter the basic software illegally. May be regarded as software modification and repairs may be refused.

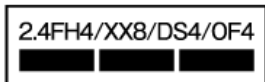
## Forcibly Powering Off

If screen freezes or power-off operation is not available, forcibly power off by Pressing & Holding Power Key (  ) and Volume Up Key at the same time for approximately 8 seconds, then release after handset vibrates three times consecutively.

## Bluetooth®/Wi-Fi (WLAN)

### Frequencies

Frequency band used by handset Bluetooth®/Wi-Fi (WLAN) functions are as follows:



2.4 : Frequency band is 2400 MHz

FH/XX/DS/OF : Modulations are FH-SS, other modulation, DS-SS, OFDM

4 : Estimated range of radio frequency interference is up to 40 m

8 : Estimated range of radio frequency interference is up to 80 m

■ ■ ■ : Utilizes 2,400 MHz to 2,483.5 MHz band without mobile device bandwidth differentiation

- Available channels may vary by country.
- For use in an airplane, contact your airline.

### Notes on Using Bluetooth® Devices

Handset operates on the same frequency band used by home electric appliances such as microwave ovens, industrial, scientific and medical equipment, premises radio stations for identifying mobile units used in the manufacturing lines of plants (radio stations requiring a license), specified low power radio stations (radio stations requiring no license) and amateur radio stations (hereinafter referred to as "another station.")

- Before using handset Bluetooth® function, confirm that premises radio stations, specified low power radios and amateur radios are not in use nearby.
- In the event of handset causing harmful radio wave interference with "another station," promptly change the operating frequency or stop radio wave emission by turning off the power, etc.
- For further questions, contact a SoftBank Shop or [SoftBank Customer Support](#).

### Reception Interference Caused by Wi-Fi (WLAN) Devices

Handset Bluetooth® function uses the same frequency band (2.4 GHz) as Wi-Fi (WLAN) devices. Using near Wi-Fi (WLAN) devices may cause radio interference, low-communication speed, noise or connection failure. In that case, take the following measures.

- Provide distance between Bluetooth® device and Wi-Fi (WLAN) device. Required distance varies by device.
- If the problem persists, power off Bluetooth® device or Wi-Fi (WLAN) device.

### Wi-Fi (WLAN)

- Wi-Fi (WLAN) uses radio waves to exchange information and LAN connection is freely established within an area where the radio wave reaches. Meanwhile, if no security is set, Wi-Fi communications may be intercepted or hacked by malicious parties. It is recommended to make necessary security settings on your responsibility.
- Use handset WLAN function only in Japan.
- Do not use Wi-Fi near magnetic devices such as electrical appliances or AV/OA devices. Magnetic/radio waves may hinder or disable communication. Avoid microwave ovens especially. Using near a TV or radio, etc. may cause interference; may affect TV reception.
- If there are multiple Wi-Fi access points using the same channel, search may fail.
- Enable Wi-Fi to search available Wi-Fi networks and then establish connection.
- Connect to Wi-Fi network before accessing Internet via Wi-Fi (WLAN).
- Take care with radio signal strength for Wi-Fi (WLAN). Radio signal strength for Wi-Fi network differs depending on the access point location. Moving close to a Wi-Fi router may improve radio signal strength.
- To save battery power, disable Wi-Fi (WLAN) when not used.

### Notes on Using 2.4 GHz Devices

WLAN devices operate on the same frequency band used by home electric appliances such as microwave ovens, industrial, scientific and medical equipment, premises radio stations for identifying mobile units used in the manufacturing lines of plants (radio stations requiring a license), specified low power radio stations (radio stations requiring no license) and amateur radio stations.

- Before using handset, confirm that premises radio stations, specified low power radios, and amateur radio stations are not in use nearby.
- In the event of handset causing harmful radio wave interference with premises radio stations for identifying mobile units, promptly change the operating frequency or stop radio wave emission by turning off the power, etc. and then contact a SoftBank Shop or [SoftBank Customer Support](#) for measurement against the cross talk (e.g. installing partition.)
- Also, in the event of handset causing radio wave interference with specified low power radios and amateur radio stations, contact a SoftBank Shop or [SoftBank Customer Support](#).

## Notes on Using 5 GHz Devices

In 5 GHz frequency bandwidth, handset can use following bands:

- 5.2 GHz band (W52/36, 40, 44, 48 ch)
- 5.3 GHz band (W53/52, 56, 60, 64 ch)
- 5.6 GHz band (W56/100, 104, 108, 112, 116, 120, 124, 128, 132, 136, 140 ch)

Using wireless LAN built-into handset in 5.2/5.3 GHz outside is prohibited by the Radio Law.

## Reception Interference Caused by Bluetooth® Devices

Bluetooth® and WLAN (IEEE802.11b/g/n) use the same frequency band. Using near Wi-Fi (WLAN) devices may cause radio interference, low-communication speed, noise or connection fault. Or may cause communication interruption or sound distortion when streaming data is played. In that case, take the following measures.

- Provide distance between Wi-Fi (WLAN) device and Bluetooth® device. Required distance varies by device.
- If the problem persists, power off Bluetooth® device.

## Waterproofing/Dustproofing

Handset complies with IPX5<sup>1</sup>, IPX8<sup>2</sup> waterproof standards and IP6X<sup>3</sup> dustproof standard with SIM Card/SD Card Slot Cover firmly closed.

- 1 Protection against water jet (at 12.5 L/min. from every direction from a distance of approximately 3 m for over 3 minutes through 6.3 mm nozzle)
- 2 Protection against seepage when slowly submerged in still tap water at room temperature to depth of 1.5 m for 30 minutes
- 3 Protection against dust ingress when being placed in an apparatus with grit and dust of diameters of 75 µm or less and shaken for 8 hours.

## Handset Waterproofing/Dustproofing

Handset waterproofing/dustproofing provides the following: Calling in the rain without umbrella (approximately 20 mm rainfall per hour)

- Do not open or close SIM Card/SD Card Slot Cover with wet hands or when handset gets wet.

Washing handset when it gets dirty or stained with liquid other than tap water

- Wash with tap water at normal temperature (5°C - 35°C) with weak water flow (less than 6L/min.) at distance of approximately 10 cm away from the tap or shower.
- When washing handset, make sure to securely close SIM Card/SD Card Slot Cover. Do not use a brush or sponge. Drain and the use handset after washing.

Using handset at a poolside

- Do not get water from a pool on handset or soak it in pool water.

## Maintaining Waterproof/Dustproof Performance

Observe the following to avoid water or dust ingress.

- Do not get any liquid other than room temperature tap water on handset, or soak it in such liquid.
- Firmly close SIM Card/SD Card Slot Cover. Even a fine particle (one hair, one grain of sand, tiny fiber, etc.) put between the port contact surfaces may allow water or dust to ingress.
- Do not push Earpiece/Speaker, Mic, Speaker, Second Mic, Headphone Port, or External Device Port with a sharp-pointed object.
- Do not let handset fall. Scratch on handset may degrade waterproof/dustproof performance.
- Rubber gaskets on inner side of SIM Card/SD Card Slot Cover play important roles for waterproofing/dustproofing. Do not remove or damage them. Also, prevent dust from adhering onto them.

## Precautions

Do not perform the following actions.

- Washing with Soap/Detergent/Bath powder
- Washing using brush/sponge
- Machine-washing
- Applying strong water flow
- Soaking in ocean water
- Using in hot spring
- Exposing to sand/mud

Observe the following precautions to use handset properly.

- Packaged accessories are not waterproof/dustproof.
- Do not apply water flow stronger than allowed directly from a tap or shower. Handset provides IPX5 waterproof performance, but doing so may cause malfunction.
- If handset gets wet with salt water, sea water, beverage, or mud or sand adheres, wash it immediately. If they dry, they become hard to remove and may cause damage or malfunction.
- Do not put in hot water, use in a sauna or apply hot airflow (from a hair dryer etc.).
- Do not move handset in water or slam handset against surface of water.
- Soaking handset in tap water should be no more than 30 minutes.
- For using handset at a swimming pool, obey rules of the facility.
- Handset does not float on water.
- Do not let water remain on handset. In cold region, water freezes up and may cause malfunction.
- Do not let water remain on Earpiece/Speaker, Mic, Speaker, Second Mic, or External Device Port. Such water may interfere with calls or get clothes or bag wet.
- If handset gets splashed with water or other liquid while SIM Card/SD Card Slot Cover is opened, seepage may occur resulting in electric shock or malfunction. In that case, stop using and power off handset, then contact a SoftBank Shop or [SoftBank Customer Support](#).
- If rubber gaskets on inner side of SIM Card/SD Card Slot Cover are damaged or deformed, have them replaced at a SoftBank Shop or [SoftBank Customer Support](#).
- Do not connect earphones, etc. to handset that is wet with water. May cause malfunction.
- Do not use handset when External Device Port is wet or dusty. May lose waterproof performance, cause electric shock, short circuit, fire, or burns.
- Do not leave handset in a humid place for a long time. Take handset out from bathroom after using.
- Avoid moving handset from cold place to warm place suddenly. Wait until handset temperature gets warm and before bringing it to bathroom etc.
- Complete protection is not guaranteed under all conditions. Malfunctions due to improper handling by the user are not covered by Warranty.

## Draining

When handset gets wet, remaining water may flow out after wiping it off. Drain as shown.

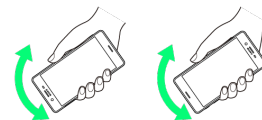
1

Wipe off moisture on handset surface and back side with dry, clean cloth etc.



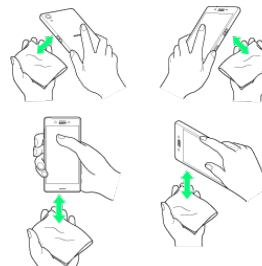
2

Shake handset approximately 20 times until there is no more water splattering (Left), then turn upside down and shake it approximately 20 times again (Right)



3

Wipe off water drained from handset with clean cloth etc.



- Turn Earpiece/Speaker, Mic/Speaker, Second Mic, Headphone Port, External Device Port, Power Key/Screen Lock Key/Fingerprint Sensor, Volume Key/Zoom Key (Up or Down) and SIM Card/SD Card Slot Cover face down onto cloth etc. to drain water.
- Turn upside down and wipe off.

4

Place handset on dry, clean cloth etc., and dry naturally at room temperature for a couple of hours

## Charging

Check the following while and after charging.

- While charging, check that handset is not wet. Never charge while handset is wet.
- Packaged accessories are not waterproof/dustproof.
- Never connect Micro USB plug when handset or charger is wet. Handset provides waterproof performance, but liquids (tap water, beverages, sea water, pet urine, etc.) adhered to Micro USB Plug may cause electric shock or short circuit, resulting in fire, burns, or malfunctions.
- Do not use Desktop Holder (optional accessory), AC Charger (optional accessory), Micro USB Cable (commercial item) in a bathroom, shower room, kitchen, lavatory or other highly humid area. Doing so may cause fire or electric shock.
- Do not touch Desktop Holder (optional accessory), AC Charger (optional accessory) or Micro USB Cable (commercial item) with wet hand. Doing so may cause electric shock.

## End User License Agreement

### End User License Agreement

Software delivered with this device and its media are owned by Sony Mobile Communications Inc., and/or its affiliated companies and its suppliers and licensors.

Sony Mobile grants you a non-exclusive limited license to use the Software solely in conjunction with the Device on which it is installed or delivered.

Ownership of the Software is not sold, transferred or otherwise conveyed. Do not use any means to discover the source code or any component of the Software, reproduce and distribute the Software, or modify the Software.

You are entitled to transfer rights and obligations of the Software to a third party, solely together with the Device with which you received the Software, provided the third party agrees in writing to be bound by the terms of this License.

This license exists throughout the useful life of this Device. It can be terminated by transferring your rights to the Device to a third party in writing. Failure to comply with any of these terms and conditions will terminate the license immediately.

Sony Mobile and its third party suppliers and licensors retain all rights, titles and interest in and to the Software.

To the extent that the Software contains material or code of a third party, such third parties shall be beneficiaries of these terms.

This license is governed by the laws of Japan.

When applicable, the foregoing applies to statutory consumer rights. In the event Software accompanying or provided in conjunction with your device is provided with additional terms and conditions, such provisions shall also govern your possession and usage of the Software.

## Export Controls and Regulations

---

### Export Controls and Regulations

The products and accessories may be subject to the application of the Foreign Exchange and Foreign Trade Act and other related laws and regulations in Japan.

In addition, the Export Administration Regulations (EAR) of the United States may be applicable.

In cases of exporting or reexporting the products and accessories, customers are requested to follow the necessary procedures at their own responsibility and cost. Please contact the Ministry of Economy, Trade and Industry of Japan or the Department of Commerce of the United States for details about procedures.

## Intellectual Property Rights

---

### Copyrights and Portrait Rights

Copyrighted contents you recorded or obtained from sites or Internet home pages using this product by downloading or other means, such as documents, images, music data, software, are prohibited from reproduction, transformation and transmission over public lines without consent of the copyright holders, unless intended for personal use or any other purpose permitted by law.

Note that some performances, shows, and exhibitions may not permit photography, movie shooting, or sound recording even for personal use.

You should also refrain from taking a picture of other people and disclosing it by such means as posting it on a site on the Internet without their consent because of possible infringement of their right of portrait.

## Trademarks

The company names and product names appearing in this manual are trademarks or registered trademarks of their respective holders.

- SOFTBANK, SOFTBANK's equivalent in Japanese and the SOFTBANK logo are registered trademarks or trademarks of SOFTBANK GROUP CORP. in Japan and other countries.
- アニメ放題, 位置ナビ, とく放題, ブック放題, S! メール and デコレメール are trademarks or registered trademarks of SoftBank Corp.
- This product contains technologies provided by ACCESS CO., LTD.  
©2011 ACCESS CO., LTD. All rights reserved.  
Copyright © 2009 The Android Open Source Project  
Licensed under the Apache License, Version 2.0 (the "License");  
you may not use this file except in compliance with the License.  
You may obtain a copy of the License at


<http://www.apache.org/licenses/LICENSE-2.0>

Unless required by applicable law or agreed to in writing, software distributed under the License is distributed on an "AS IS" BASIS, WITHOUT WARRANTIES OR CONDITIONS OF ANY KIND, either express or implied.

See the License for the specific language governing permissions and limitations under the License.

ACCESS and the ACCESS logo are registered trademarks or trademarks of ACCESS CO., LTD. in the United States, Japan and/or other countries.

- "Yahoo!" and the "Yahoo!" logo are trademarks and/or registered trademarks of Yahoo! Inc. in the U.S.
- Copyright © 2012 Yahoo Japan Corporation. All Rights Reserved.
- Internet SagiWall is a trademark or registered trademark of BB Softservice Corp.
- McAfee and the McAfee logo are trademarks or registered trademarks of McAfee, Inc. or its subsidiaries in the United States or other countries.  
Intel and the Intel logo are trademarks of the Intel Corporation in the U.S. and/or other countries.
- ©SoftBank Corp. /Powered by MediaDo
- ©Disney  
The handset may contain content and other works that the Walt Disney Company (Japan) Ltd., its parent or their affiliates (collectively, "Disney") own, co-own or license copyright and other intellectual property rights.  
Please read the applicable Terms of Use (ディズニー公式スマートフォンメンバー会員規約) before use.  
"DISNEY STYLE" and "DISNEY MARKET" are registered trademarks of Disney.
- Qualcomm Quick Charge is a product of Qualcomm Technologies, Inc.
- Qualcomm is a trademark of Qualcomm Incorporated, registered in the United States and other countries.  
Qualcomm Quick Charge is a trademark of Qualcomm Incorporated. All Qualcomm Incorporated marks are used with permission.

- "Bluetooth®" is a registered trademark of Bluetooth SIG, Inc., and Sony Mobile Communications is licensed to use them.
- Wi-Fi Protected Setup, Wi-Fi Protected Setup logo, WPA, Wi-Fi Direct and Wi-Fi CERTIFIED Miracast are trademarks of Wi-Fi Alliance.
- Xperia, TrackID, Socialife and Xperia Lounge are trademarks or registered trademarks of Sony Mobile Communications Inc.
- PlayStation and DUALSHOCK are trademarks or registered trademarks or Sony Interactive Entertainment Inc.
- Sony, スイングパノラマ, スマイルシャッター, プレミアムおまかせオート, Face Detection, X-Reality, Reader, STAMINA, and TV SideView are trademarks or registered trademarks of Sony Corporation.
- SmartAR® is an augmented reality technology developed by Sony Corporation and it is a registered trademark or trademark in Japan and other countries.
- POBox and POBox logo are registered trademarks of Sony Computer Science Laboratories, Inc. POBox is a co-developed technology of Sony Computer Science Laboratories, Inc. and Sony Mobile Communications, Inc.
- microSD logo, microSDHC logo and microSDXC logo are trademarks of SD-3C, LLC.
- "おサイフケータイ" is a registered trademark of NTT DOCOMO, INC.
- FeliCa is a contactless IC card technology developed by Sony Corporation.  
FeliCa is a registered trademark of Sony Corporation.  
f is a registered trademark of FeliCa Networks, Inc.
-  is a trademark or registered trademark of NFC Forum, Inc. in the US and other countries.
- QR code is a registered trademark of DENSO WAVE INCORPORATED.
- "Google" and "Google" logo, "Android," "Google Play," "Gmail," "Google Maps," "Hangouts," "Google Calendar," "YouTube," "Google Chrome" are trademarks or registered trademarks of Google, Inc.
- Facebook is a registered trademark of Facebook, Inc.
- "Twitter" and the logo are registered trademarks of Twitter, Inc.
- "mora" and its name and logo are registered trademarks of Label Gate Co., Ltd.
- "DLNA" and the "DLNA" logo are trademarks or registered trademarks of Digital Living Network Alliance.
- MirrorLink and MirrorLink logo are trademarks or registered trademarks of Car Connectivity Consortium LLC.
- "Microsoft," "Windows," "Windows Vista," "Microsoft Excel," "Microsoft PowerPoint" and "Windows Media" are trademarks or registered trademarks of Microsoft Corporation in the United States and other countries.
- "Microsoft Word" is a product name of Microsoft Corporation in the United States.
- This product contains technology subject to certain intellectual property rights of Microsoft. Use or distribution of this technology outside of this product is prohibited without the appropriate license(s) from Microsoft.
- This product is licensed under the MPEG-4 visual and AVC patent portfolio license for the personal and non-commercial use of a consumer for (i) encoding video in compliance with the MPEG-4 visual standard ("MPEG-4 video") or the AVC standard ("AVC video") and/or (ii) decoding MPEG-4 or AVC

video that was encoded by a consumer engaged in a personal and non-commercial activity and/or was obtained from a video provider licensed by MPEG LA to provide MPEG-4 and/or AVC video. No license is granted or shall be implied for any other use. Additional information including that relating to promotional, internal and commercial uses and licensing may be obtained MPEG LA, L.L.C. (See <http://www.mpegla.com>). MPEG Layer-3 audio decoding technology licensed from Fraunhofer IIS and Thomson.

· Other product and company names mentioned herein may be the trademarks of their respective owners.

In context, TM and ® mark are omitted.

· Any rights not expressly granted herein are reserved. All other trademarks are property of their respective owners.

## RF Exposure Information/Specific Absorption Rate (SAR) Information

### Specific Absorption Rate (SAR) for This Product (for Japan)

"502SO" here refers to this mobile phone "Xperia™ X Performance."

This mobile phone 502SO meets Japanese technical regulations\* and international guidelines for exposure to radio waves.

The Japanese technical regulations for exposure to radio frequency energy established permitted levels of radio frequency energy, based on standards developed by independent scientific organizations through periodic and thorough evaluation of scientific studies.

The regulations employ a unit of measurement known as the Specific Absorption Rate, or SAR.

The SAR limit is 2 watts/kilogram (W/kg) averaged over ten grams of tissue.

The limit includes a substantial safety margin designed to assure the safety of all persons, regardless of age and health.

The value of the limit is equal to the value given in international guidelines recommended by ICNIRP\*\*, which is in collaboration with the World Health Organization (WHO).

The highest SAR value for this mobile phone is 1.08 W/kg\*\*\* when tested for use at the ear, and 0.74 W/kg\*\*\* when worn on the body in the below manner\*\*\*\*.

While there may be differences between the SAR levels of various phones and at various positions, all phones meet the Japanese technical regulations.

Although the SAR is determined at the highest certified power level, the actual SAR of the phone during operation can be well below the maximum value.

Use at positions other than at the ear\*\*\*\*

This mobile phone may be used at positions other than at the ear. By using an accessory such as a belt clip holster that maintains a 1.5cm separation with no metal (parts) between the body and the mobile phone, this mobile phone will comply with international guidelines for radio wave protection.

\* The technical regulations are provided in Article 14-2 of the Ministry Ordinance Regulating Radio Equipment.

\*\* International Commission on Non-Ionizing Radiation Protection

\*\*\* The value is under simultaneous transmission use conditions.

The World Health Organization has announced that "A large number of studies have been performed over the last two decades to assess whether mobile phones pose a potential health risk. To date, no adverse health effects have been established as being caused by mobile phone use."

For more information about SAR, see the following websites:

· Ministry of Internal Affairs and Communications (MIC)

<http://www.tele.soumu.go.jp/e/sys/ele/body/index.htm>  
 · Association of Radio Industries and Businesses (ARIB)  
<http://www.arib-emf.org/01denpa/denpa02-02.html>  
 (Japanese)

This mobile phone 502SO is confirmed to comply with guidelines relating to effects of radio wave exposure as set forth by the Council of Europe (CE) and the Federal Communications Commission (FCC). Refer to the following.

## European RF Exposure Information

Your mobile device is a radio transmitter and receiver. It is designed not to exceed the limits for exposure to radio waves recommended by international guidelines. These guidelines were developed by the independent scientific organization ICNIRP and include safety margins designed to assure the protection of all persons, regardless of age and health. The guidelines use a unit of measurement known as the Specific Absorption Rate, or SAR. The SAR limit for mobile devices is 2.0 W/kg and the highest SAR value for this device when tested at the ear is 0.51 W/kg\*. As mobile devices offer a range of functions, they can be used in other positions, such as on the body as described in this User Guide. In this case, the highest tested SAR value is 0.64 W/kg\*.

\* The tests are carried out in accordance with international guidelines for testing.

## FCC RF Exposure Information

Your handset is a radio transmitter and receiver. It is designed and manufactured not to exceed the emission limits for exposure to radio frequency (RF) energy set by the Federal Communications Commission of the U.S. Government.

The guidelines are based on standards that were developed by independent scientific organization through periodic and thorough evaluation of scientific studies. The standards include a substantial safety margin designed to assure the safety of all persons, regardless of age and health.

The exposure standard for wireless handsets employs a unit of measurement known as the Specific Absorption Rate, or SAR.

The SAR limit set by the FCC is 1.6 W/kg. The tests are performed in positions and locations (e.g. at the ear and worn on the body) as required by the FCC for each model.

The highest SAR value as reported to the authorities for this phone model when tested for use by the ear is 0.50 W/kg, when worn on the body is 0.98 W/kg and when WiFi hotspot mode is 0.75 W/kg. For body-worn operation, this phone has been tested and meets the FCC RF exposure guidelines. Please use an accessory designated for this product or an accessory which contains no metal and which positions the handset a minimum of 15 mm from the body. For devices which include "WiFi hotspot" functionality, SAR measurements for the device operating in WiFi hotspot mode were taken using a separation distance of 10 mm.

The use of accessories that do not satisfy these requirements may not comply with FCC RF exposure requirements, and should be avoided. The FCC has granted an Equipment Authorization for this model handset with all reported SAR levels evaluated as in compliance with the FCC RF emission guidelines. SAR information on this model handset is on file with the FCC and can be found under the Display Grant section of <http://www.fcc.gov/oet/ea/> after searching on FCC ID PY7-PM0942.

Additional information on Specific Absorption Rates (SAR) can be found on the FCC website at <https://www.fcc.gov/general/radio-frequency-safety-0>.

The World Health Organization has stated that present scientific information does not indicate the need for any special precautions for the use of mobile devices. They note that if you want to reduce your exposure then you can do so by limiting the length of calls or using a hands-free device to keep the mobile phone away from the head and body.

World Health Organization

<http://www.who.int/emf>

List of Specific Absorption Rates (SAR) for radio waves by smartphone/3G model

<http://www.softbank.jp/mobile/support/sar/> (Japanese)

## FCC Statement for the USA

### FCC Statement for the USA

This device complies with Part 15 of the FCC rules. Operation is subject to the following two conditions:

- (1) This device may not cause harmful interference.
  - (2) This device must accept any interference received, including interference that may cause undesired operation.
- Any change or modification not expressly approved by Sony may void the user's authority to operate the equipment. This equipment has been tested and found to comply with the limits for a Class B digital device, pursuant to Part 15 of the FCC Rules. These limits are designed to provide reasonable protection against harmful interference in a residential installation. This equipment generates, uses and can radiate radio frequency energy and if not installed and used in accordance with the instructions, may cause harmful interference to radio communications. However, there is no guarantee that interference will not occur in a particular installation.

If this equipment does cause harmful interference to radio or television reception, which can be determined by turning the equipment off and on, the user is encouraged to try to correct the interference by one or more of the following measures:

- Reorient or relocate the receiving antenna.
- Increase the separation between the equipment and receiver.
- Connect the equipment into an outlet on a circuit different from that to which the receiver is connected.
- Consult the dealer or an experienced radio/TV technician for help.

## Declaration of Conformity for 502SO

### Declaration of Conformity for 502SO

**CE 0682** 

Hereby, Sony Mobile declares that the radio equipment type PM-0942-BV is in compliance with Directive: 1999/05/EC.

The full text of the EU declaration of conformity is available at the following internet address:

<http://www.sonymobile.co.jp/product/SAR/doc/>

Manufacturer: Sony Mobile Communications Inc, 4-12-3 Higashi-Shinagawa, Shinagawa-ku, Tokyo, 140-0002, Japan

For EU product compliance: Sony Belgium, bijkantoor van Sony Europe Limited, Da Vincilaan 7-D1, 1935 Zaventem, Belgium

## VCCI

---

### VCCI

Handset complies with a technical standards based on VCCI RULES FOR VOLUNTARY CONTROL MEASURES and the mark of conformity is depicted electronically on the screen.



## Xperia™ X Performance User Guide Index

### A

About the User Guide.....	3
Accessing Instructions on Handset.....	3
Account & Sync Settings.....	72
Album.....	55
App Settings.....	71

### B

Basic Operation.....	16
Bluetooth®/Wi-Fi (WLAN).....	86

### C

Capturing Still Images/Videos.....	52
Charging Battery.....	11
Connecting by Wi-Fi.....	60
Customer Service.....	74

### D

Declaration of Conformity for 502SO.....	94
--	----

### E

End User License Agreement.....	89
Export Controls and Regulations.....	90

### F

FCC Statement for the USA.....	94
--------------------------------	----

### G

Google Play.....	21
------------------	----

### H

Handset Settings.....	68
Home Screen Basics.....	28

### I

Important Product Information.....	84
Intellectual Property Rights.....	90

### L

Listening to Music.....	58
Locking Screen.....	24

### M

Making Calls while Abroad.....	64
--------------------------------	----

Messaging..... 44

## O

Optional Services..... 36

Other Settings..... 70

## P

Parts & Functions..... 6

Phone Number..... 17

Placing/Answering Calls..... 34

Power On/Off..... 12

## R

RF Exposure Information/Specific Absorption Rate (SAR)  
Information..... 92

## S

Safety Precautions..... 76

SAR..... 92

SD Card..... 9

Security Codes/Operation Password..... 23

Sending S! Mail/SMS..... 44

Silent Mode..... 18

SIM Card..... 7

SIM PIN..... 23

Sound & Notification Settings..... 70

Specifications..... 74

Status Bar..... 29

## T

Text Entry..... 18

## U

Updating Software..... 25

Using a Google Account..... 19

Using Bluetooth®Function..... 61

Using Chrome..... 47

Using Contacts..... 41

Using Email..... 47

Using Gmail..... 46

Using Notifications Window/Quick Settings..... 30

Using Touchscreen..... 12

## V

VCCI..... 95

Viewing Captured Still Images/Videos (Album)..... 55

## W

Waterproofing/Dustproofing..... 87

Wi-Fi Settings..... 69

WLAN..... 86



# Xperia™ X Performance User Guide

July 2016, First Edition  
SoftBank Corp.

Visit [SoftBank Shop](#) for assistance

Model : Xperia™ X Performance  
Manufacturer : Sony Mobile Communications Inc.